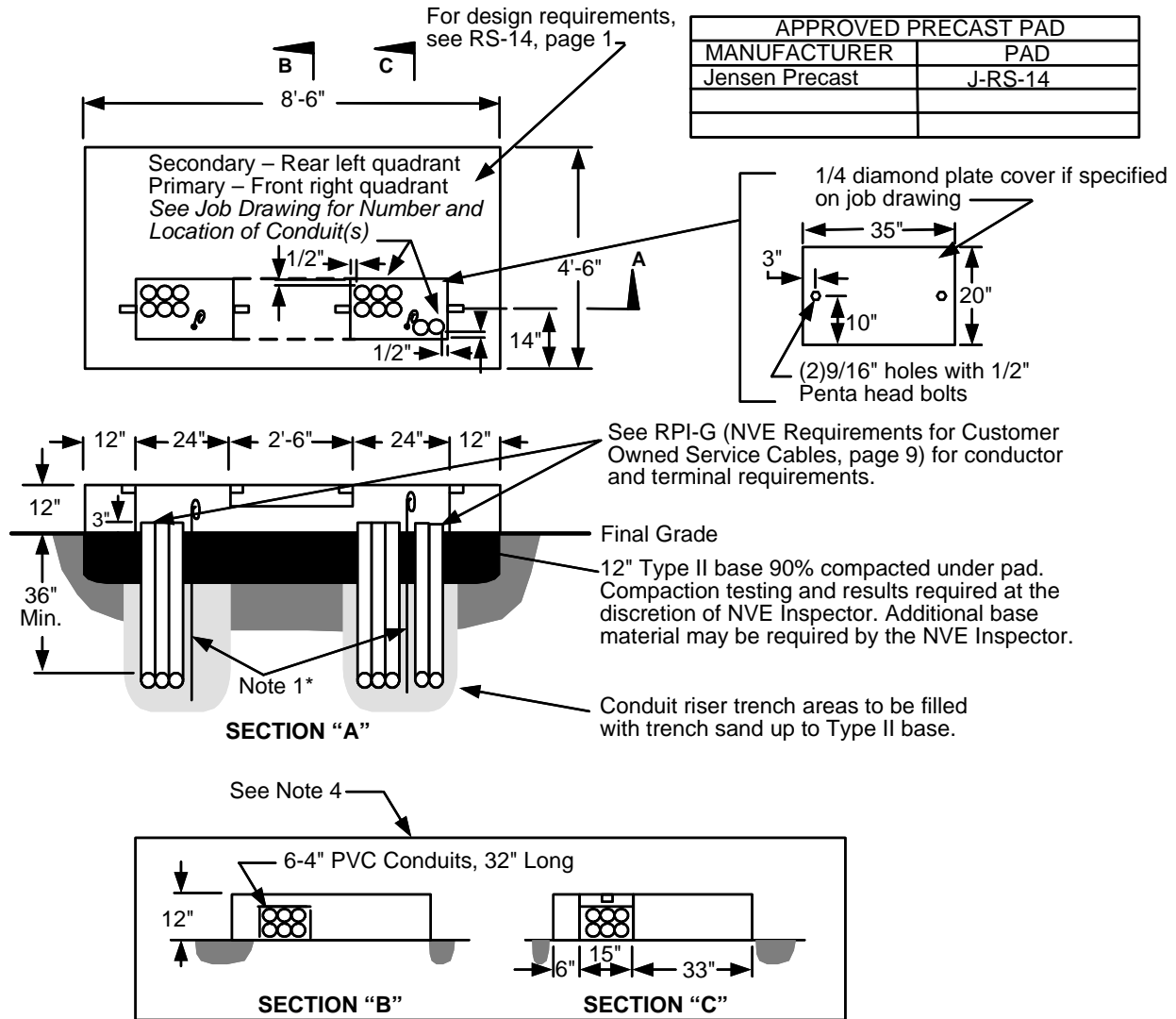


# Equipment Pads

## INSTALLATION REQUIREMENTS




### NOTES:

1. Grounding by customer shall be 2 - 50' #2 stranded bare copper ground wires laid in the bottom of the conduit trench in opposite directions with 2 - 5' tails in the pad opening.
2. For location and clearances to other structures, see: RS-5.
3. Retaining wall required when grade from bottom of pad rises or lowers more than 1' in 5' horizontally.
4. Sections "B" and "C" are for pour-in-place pads only.
5. The top of the pad shall be leveled and must clear the final grade by 12".

\*Only at the discretion of NVE's inspectors and T&D Standards, a 1/2"x8' copper ground rod can be installed in accordance with the latest edition/revision of the NESC.

	Electric Service Requirements			RS-20
	<b>Commercial Transformer Pad: Two 1Ph, 12 or 25kV</b>			
Drawn:	Eng:	Appr:	Date:	Revision: 03
SM	JR	DA	02/18	Page 1 of 2

THIS PAGE INTENTIONALLY LEFT BLANK

				Electric Service Requirements		RS-20
				Commercial Transformer Pad: Two 1Ph, 12 or 25kV		
Drawn:	Eng:	Appr:	Date:	Revision: 03		
SM	JR	DA	02/18	Page 2 of 2		