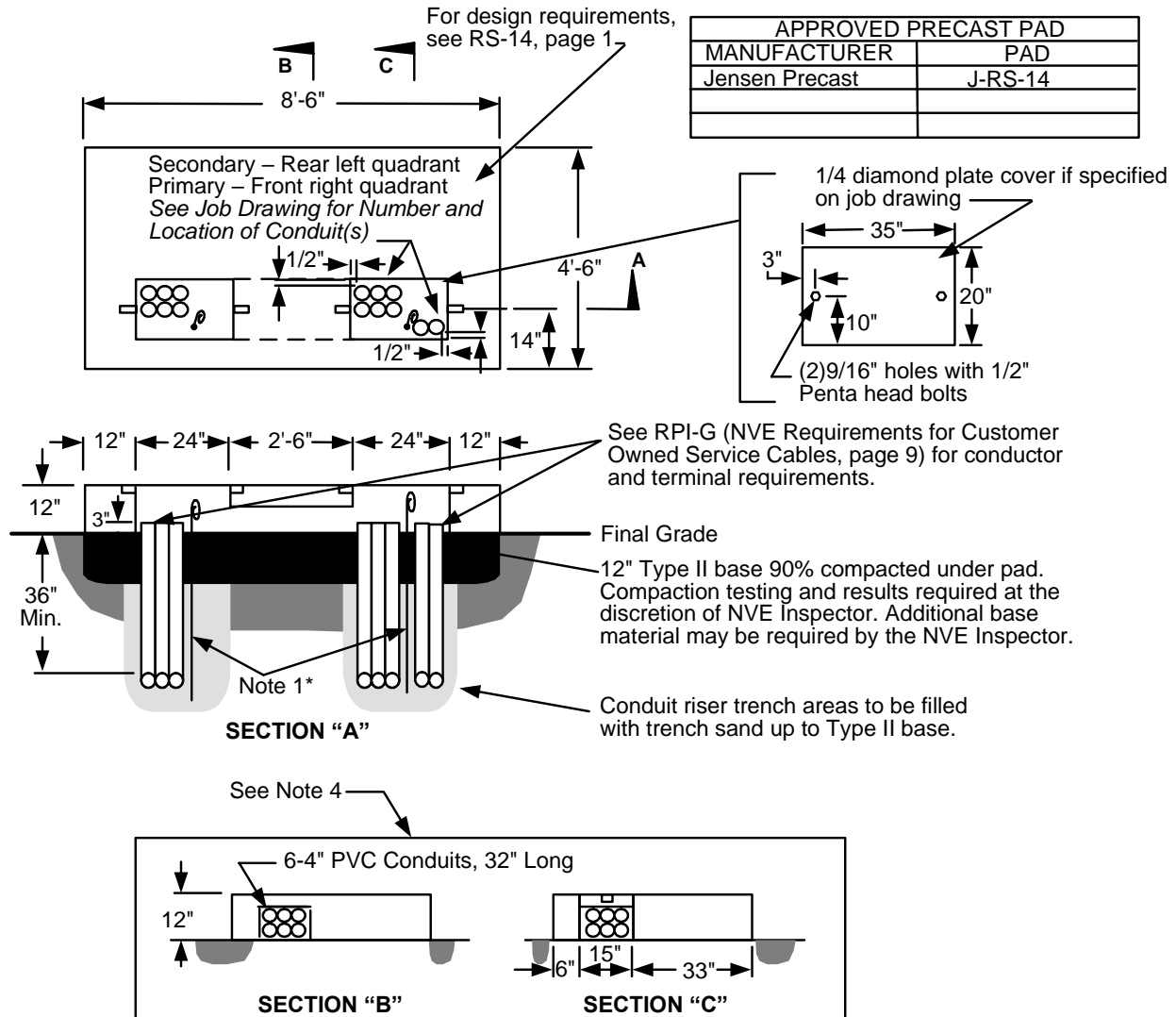


Equipment Pads


INSTALLATION REQUIREMENTS




NOTES:

- Grounding by customer shall be 2 - 50' #2-7 stranded bare copper ground wires laid in the bottom of the conduit trench in opposite directions with 2 - 5' tails in the pad opening.
- For location and clearances to other structures, see: RS-5.
- Retaining wall required when grade from bottom of pad rises or lowers more than 1' in 5' horizontally. See RS-5 for details.
- Sections "B" and "C" are for pour-in-place pads only.
- The top of the pad shall be leveled and must clear the final grade by 12".

**Only at the discretion of NVE's inspectors and T&D Standards, a 1/2"x8" copper ground rod can be installed in accordance with the latest edition/revision of the NESC.*

				Electric Service Requirements		RS-20
				Commercial Transformer Pad: Two 1Ph, 12 or 25kV		
Drawn:	Eng:	Appr:	Date:			Revision: 4
MP	DB	DA	3/21			Page 1 of 2

THIS PAGE INTENTIONALLY LEFT BLANK

				Electric Service Requirements		RS-20
				Commercial Transformer Pad: Two 1Ph, 12 or 25kV		
Drawn:	Eng:	Appr:	Date:			Revision: 4
MP	DB	DA	3/21			Page 2 of 2