

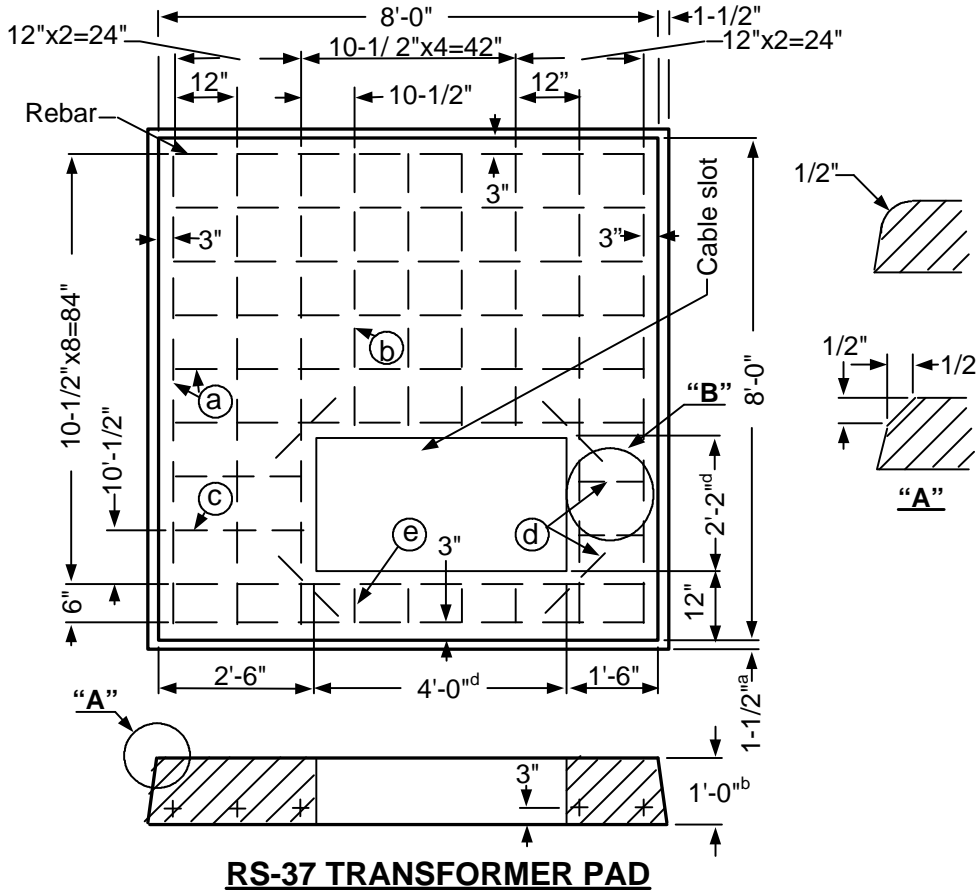
Equipment Pads

DESIGN REQUIREMENTS

TOLERANCES: REBAR SCHEDULE:

- a = +0", -1-1/2"
 b = +1/4", -0"
 c = +0", -1/4"
 d = +1/2", -0"
- (a) = 13 ea. 90"
 (b) = 4 ea. 53"
 (c) = 2 ea. 24"
 (d) = 6 ea. 12"
 (e) = 4 ea. 6"

APPROVED PADS	
MANUFACTURER	PAD
Jensen Precast	J-RS-37
Rockway Precast	R-RS-37



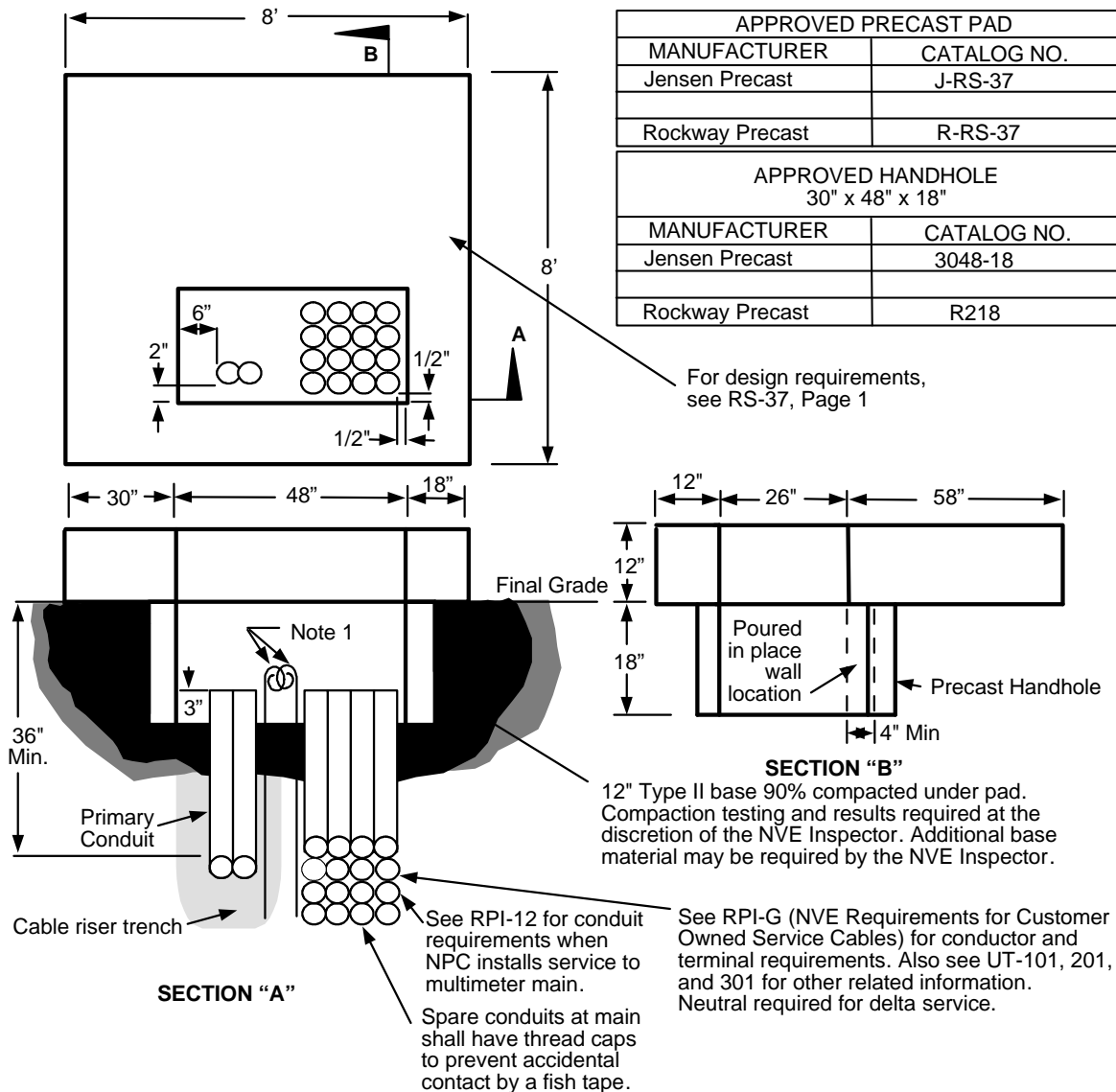
RS-37 TRANSFORMER PAD

- Rebar
 - Minimum #4
 - Placed into the above drawing according to the rebar schedule.
- Pad
 - A 26" X 48" cable slot.
 - Shall meet RS-G2 and RS-G3.
- Only the RSI-39 Pad
 - Two 2-1/2" X 2-1/2" X 1/4" mm. X66" hot dip galvanized steel angle.
 - A 1" diameter PVC ell with a minimum radius 5-3/4".
 - A 1" diameter PVC coupling.

				Electric Service Requirements		RS-37
				Transformer Pad:		
3 Ph, 12/25KV 500-1000KVA @208V, 1000-2500KVA @480V				Revision: 1		
Drawn:	Eng:	Appr:	Date:	Page 1 of 2		
DH	DA	DA	10/06			

Equipment Pads

INSTALLATION REQUIREMENTS



NOTES:

- Grounding by customer shall be 2-50' #2 stranded bare copper ground wires laid in the bottom of the trench in opposite directions with 2-5' tails in the pad opening.
NOTE: Only at the discretion of NVE's inspectors, a 1/2" x 8' copper ground rod can be installed.
- For location and clearances to other structures, see RS-5.
- Retaining wall required when grade from bottom of pad rises or lowers more than 1' in 5' horizontally.
- All secondary conduits shall be located within 24" of the right side of the pad opening.
- The top of the pad shall be leveled and must clear the final grade by 12".

				Electric Service Requirements		RS-37
				Transformer Pad: 3 Ph, 12/25KV 500-1000KVA @208V, 1000-2500KVA @480V		
Drawn:	Eng:	Appr:	Date:			Revision: 1
DH	DA	DA	10/06			Page 2 of 2