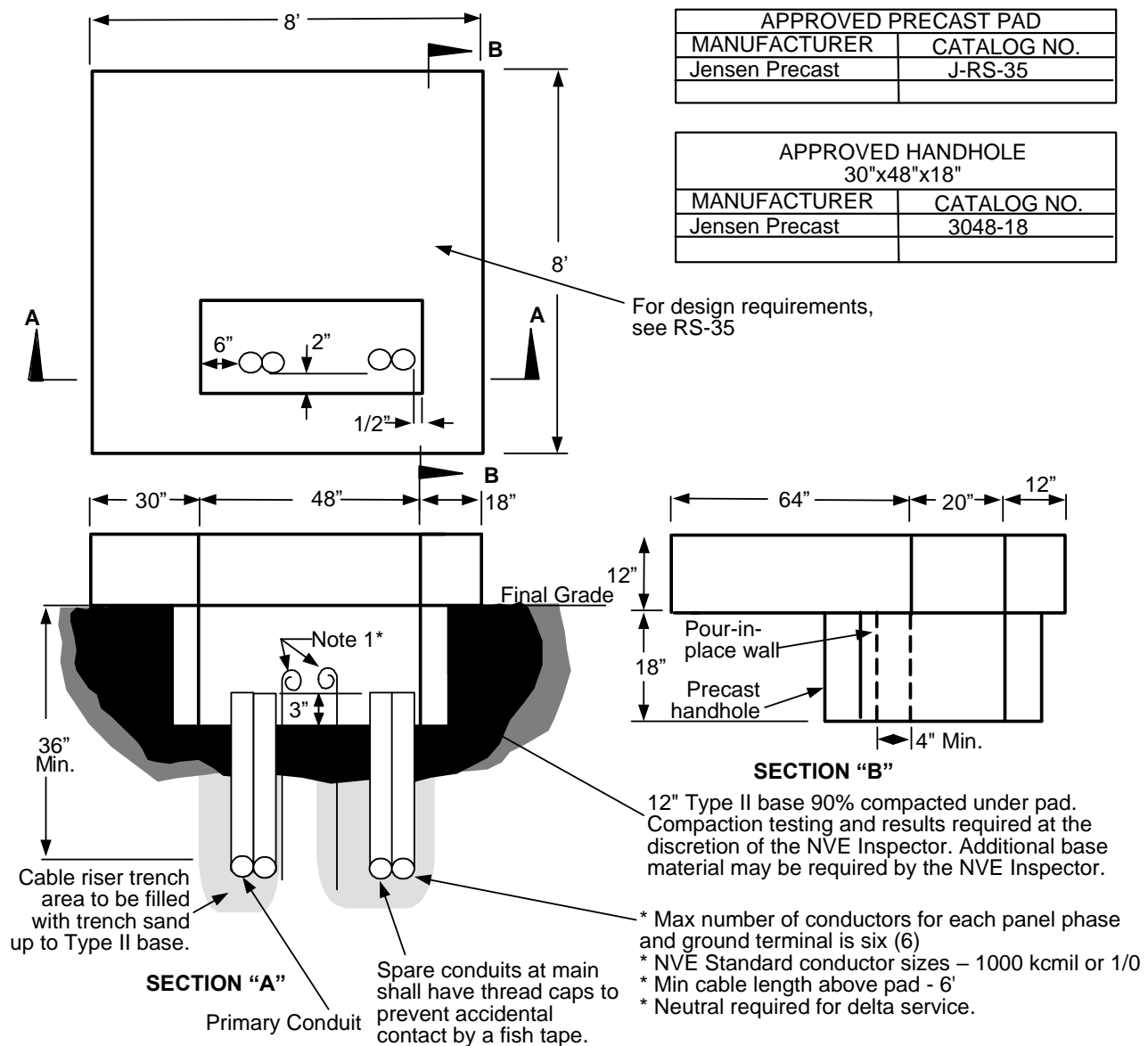



INSTALLATION REQUIREMENTS




NOTES:

- Grounding by customer shall be 2-50' #2-7 stranded bare copper ground wires laid in the bottom of the conduit trench in opposite directions with 2-5' tails in the pad opening.
 - For location and clearances to other structures, see RS-5.
 - Retaining wall required when grade from bottom of pad rises or lowers more than 1' in 5' horizontally. See RS-5 for details.
 - All secondary conduits shall be located within 24" of the right side of the pad opening.
 - The top of the pad shall be leveled and must clear the final grade by 12".
- * Only at the discretion of NVE's inspectors, a 1/2"x8' copper ground rod can be installed in accordance with the latest edition/revision of the NESC.

| | | | | | | |
|---|------|-------|-------|---|--|-------------|
|  | | | | Electric Service Requirements | | RS-40 |
| | | | | Transformer Pad: 3 Ph, 12kV to 4kV Step Down | | |
| Drawn: | Eng: | Appr: | Date: | | | Revision: 3 |
| MP | DB | DA | 3/21 | | | Page 1 of 2 |

THIS PAGE INTENTIONALLY LEFT BLANK

| | | | | | | |
|---|------|-------|-------|---|--|-------------|
|  | | | | Electric Service Requirements | | RS-40 |
| | | | | Transformer Pad: 3 Ph, 12kV to 4kV Step Down | | |
| Drawn: | Eng: | Appr: | Date: | | | Revision: 3 |
| MP | DB | DA | 3/21 | | | Page 2 of 2 |