

Equipment Pads

DESIGN REQUIREMENTS

TOLERANCES:

a = +0", -1-1/2"

b = +1/4", -0"

c = +1/2", -0"

REBAR SCHEDULE:

(a) = 6 ea. 72"

(b) = 7 ea. 54"

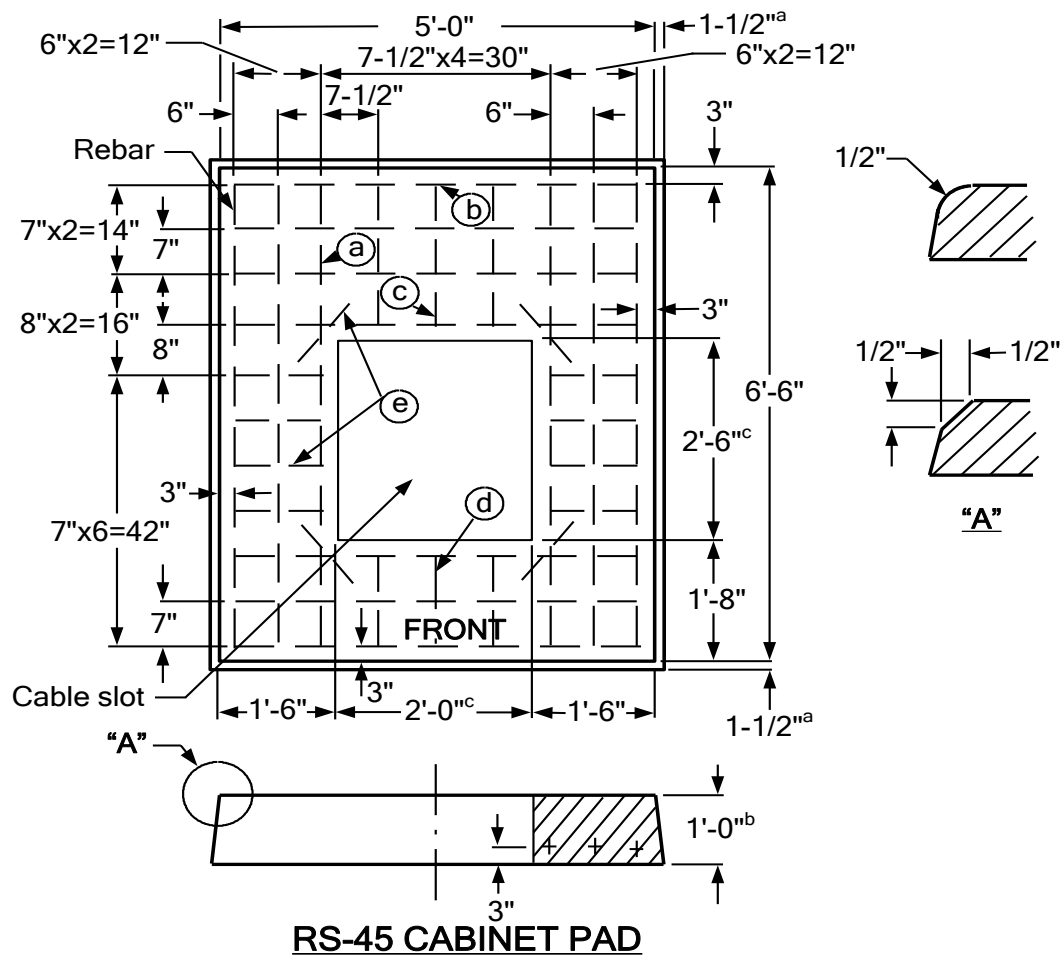
(c) = 3 ea. 22"

(d) = 3 ea. 14"

(e) = 12 ea. 12"


APPROVED PADS

MANUFACTURER	PAD
Jensen Precast	J-RS-45



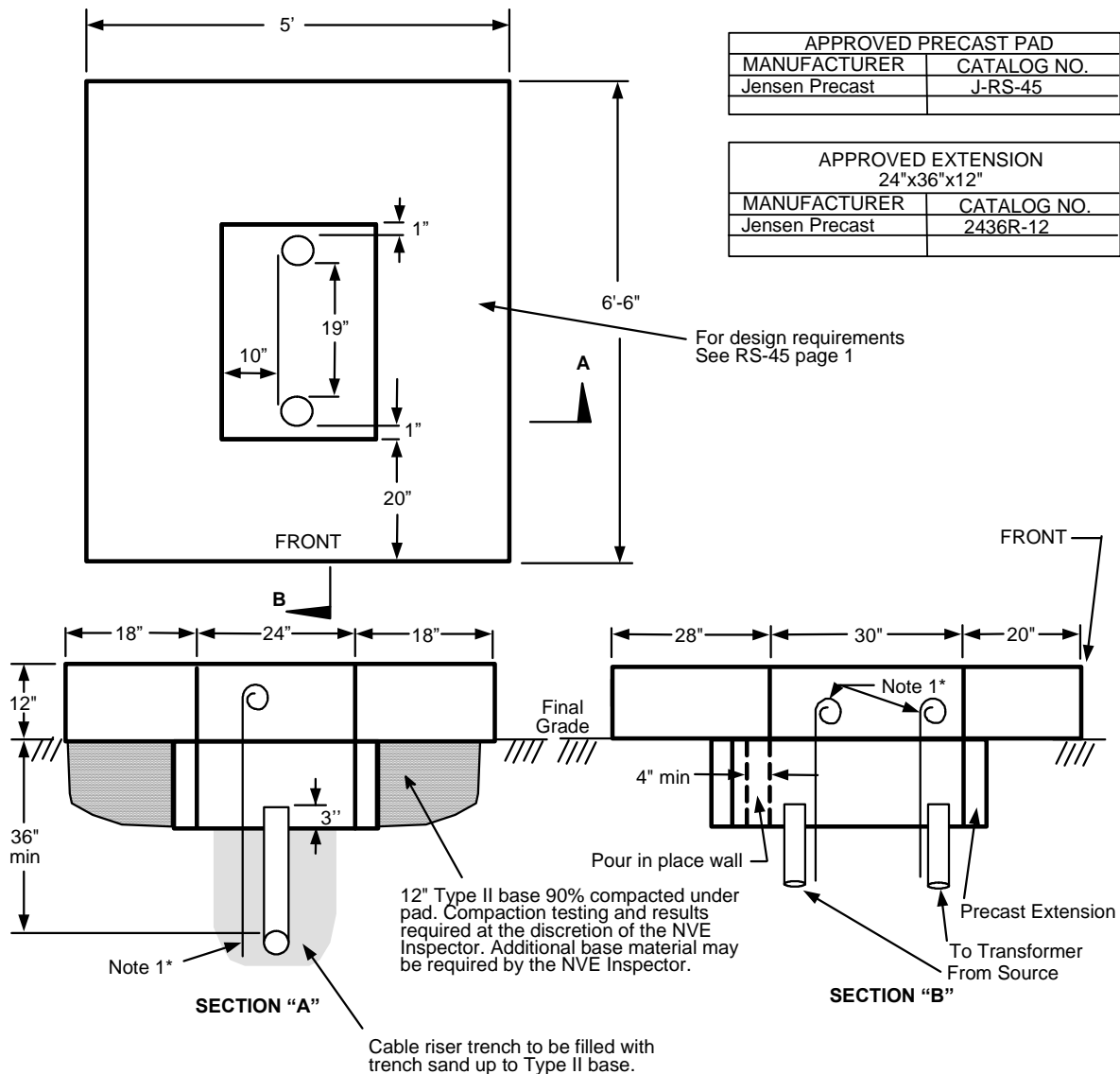
RS-45 CABINET PAD

1. Rebar
 - A. Minimum #4
 - B. Placed into the above drawing according to the rebar schedules.
2. Pad
 - A. A 24" x 30" cable slot.
 - B. Have the word "Front" embossed on the top of the pad as shown.
 - C. Shall meet RS-G2 and RS-G3.

	Electric Service Requirements				RS-45
	Cabinet Pad: Fuse, 15kV				
	Drawn:	Eng:	Appr:	Date:	Revision: 3
	MP	DB	DA	3/21	Page 1 of 2


Equipment Pads

Installation Requirements



NOTES:

- Grounding by customer shall be 2-50' #2-7 stranded bare copper ground wires laid in the bottom of the conduit trench in opposite directions with 2-5' tails in the pad opening.
 - For location and clearances to other structures, see: RS-5.
 - Retaining wall required when grade from bottom of pad rises or lowers more than 1' in 5' horizontally. See RS-5 for details.
 - All secondary conduits shall be located within 24" of the right side of the pad opening.
 - The top of the pad shall be leveled and must clear the final grade by 12".
- * Only at the discretion of NVE's inspectors, a 1/2"x8' copper ground rod can be installed in accordance with the latest edition/revision of the NESC.

				Electric Service Requirements		RS-45
				Cabinet Pad: Fuse, 15kV		
Drawn:	Eng:	Appr:	Date:			Revision: 3
MP	DB	DA	3/21			Page 2 of 2