

## Equipment Pads

### DESIGN REQUIREMENTS

#### TOLERANCES:

a = +0", -1-1/2"

b = +1/4", -0"

c = +1/2", -0"

#### REBAR SCHEDULE:

(a) = 16 ea. 90"

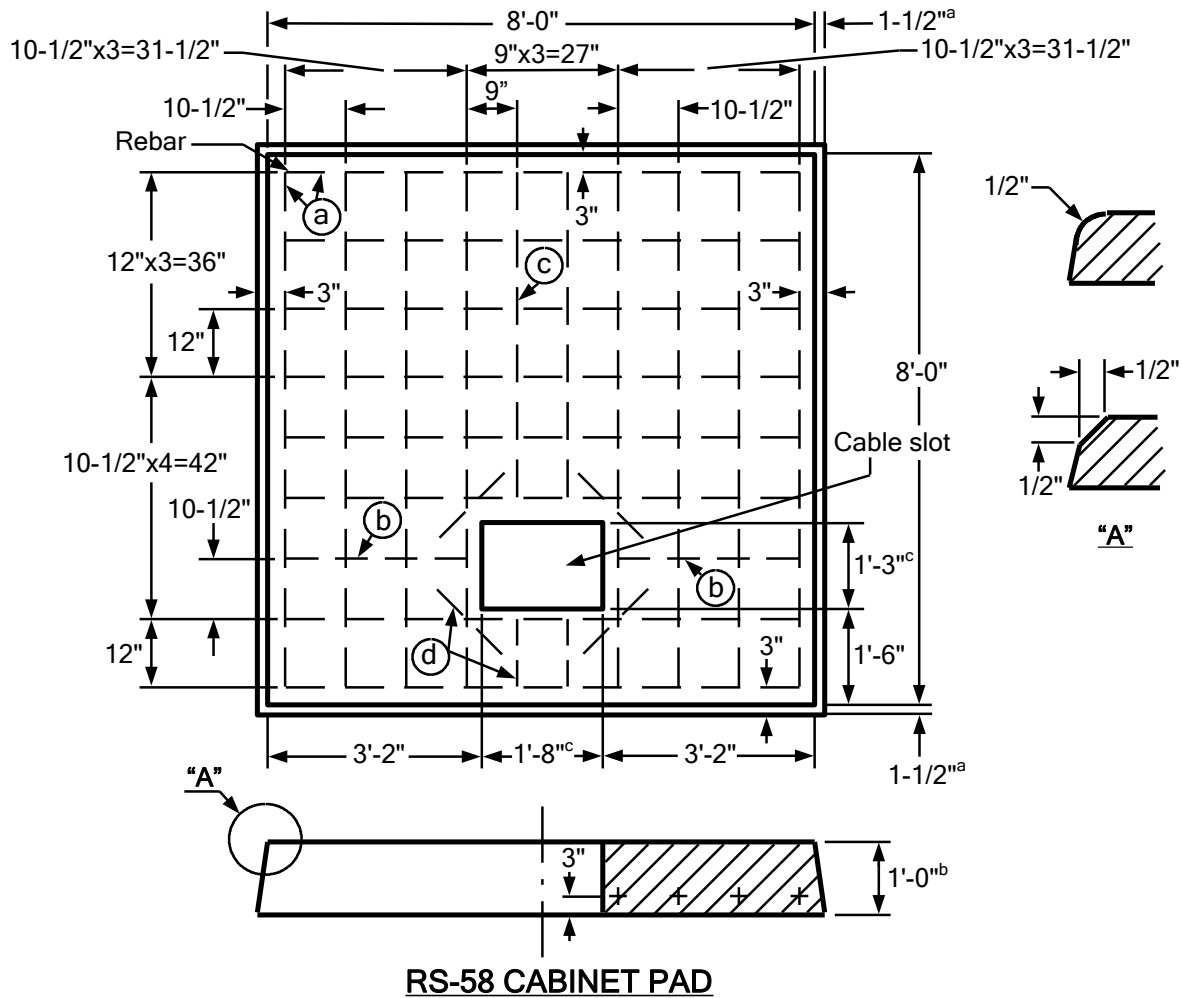
(b) = 2 ea. 32"

(c) = 2 ea. 57"

(d) = 6 ea. 12"


#### APPROVED PADS

MANUFACTURER	PAD
Jensen Precast	J-RS-58



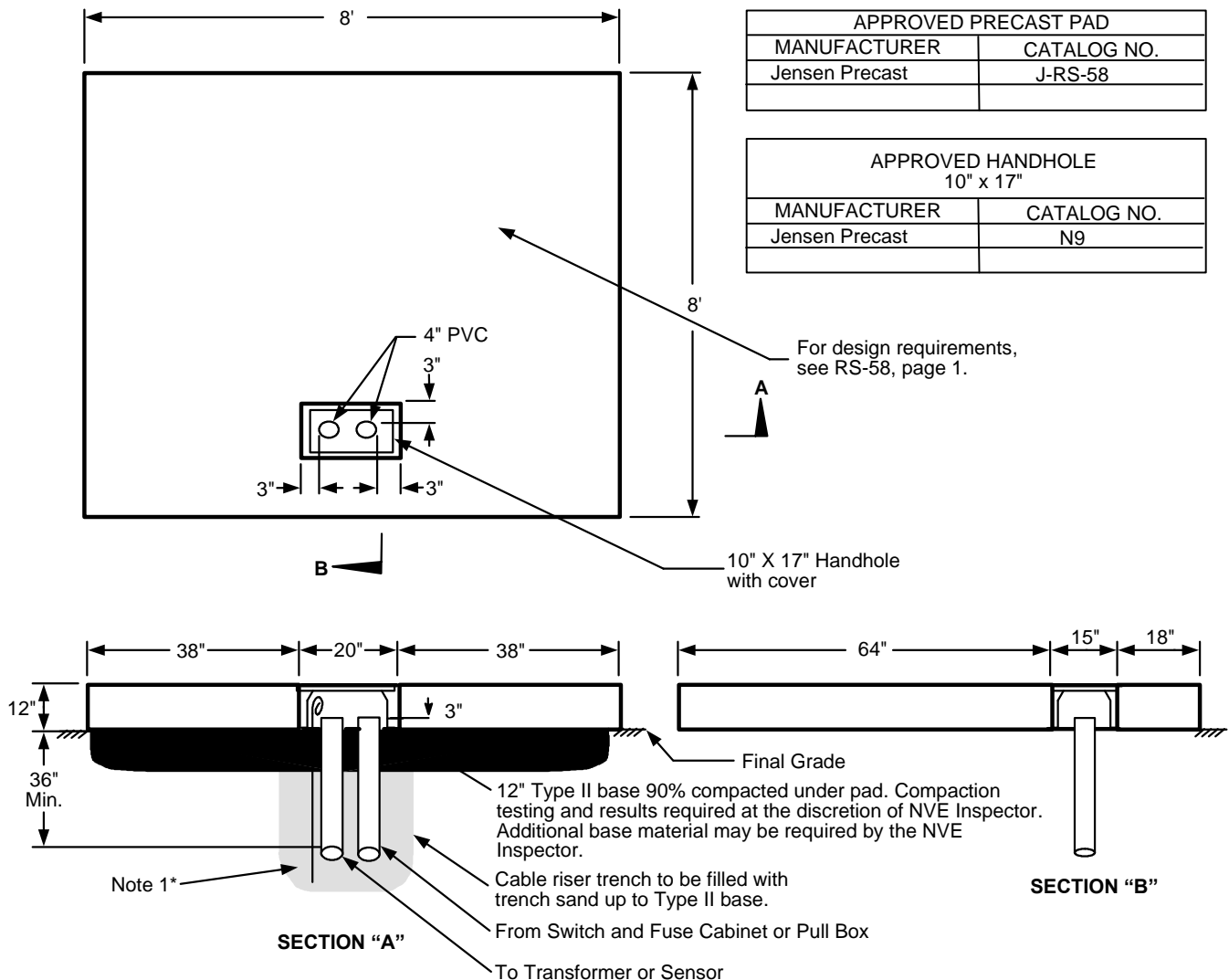
**RS-58 CABINET PAD**

1. Rebar
  - A. Minimum #4
  - B. Placed into the above drawing according to the rebar schedule.
2. Pad
  - A. A 15" x 20" cable slot.
  - B. Shall meet RS-G2 and RS-G3.

				Electric Service Requirements		RS-58
				Cabinet Pad: Capacitor Bank, 25kV		
Drawn:	Eng:	Appr:	Date:			Revision: 3
MP	DB	DA	3/21			Page 1 of 2


## Equipment Pads

### INSTALLATION REQUIREMENTS



#### NOTES:

- Grounding by customer shall be 2-50' #2-7 stranded bare copper ground wires in the bottom of the conduit trench in opposite directions with 2-5' tails in the pad opening.
  - For location and clearances to other structures, see RS-5.
  - Retaining wall required when grade from bottom of pad rises or lowers more than 1' in 5' horizontally. See RS-5 for details.
  - All secondary conduits shall be located within 24" of the right side of the pad.
  - The top of the pad shall be leveled and must clear the final grade by 12".
- \* Only at the discretion of NVE's inspectors, a 1/2"x8' copper ground rod can be installed in accordance with the latest edition/revision of the NESC.

				Electric Service Requirements		RS-58
				Cabinet Pad: Capacitor Bank, 25kV		
Drawn:	Eng:	Appr:	Date:			Revision: 3
MP	DB	DA	3/21			Page 2 of 2