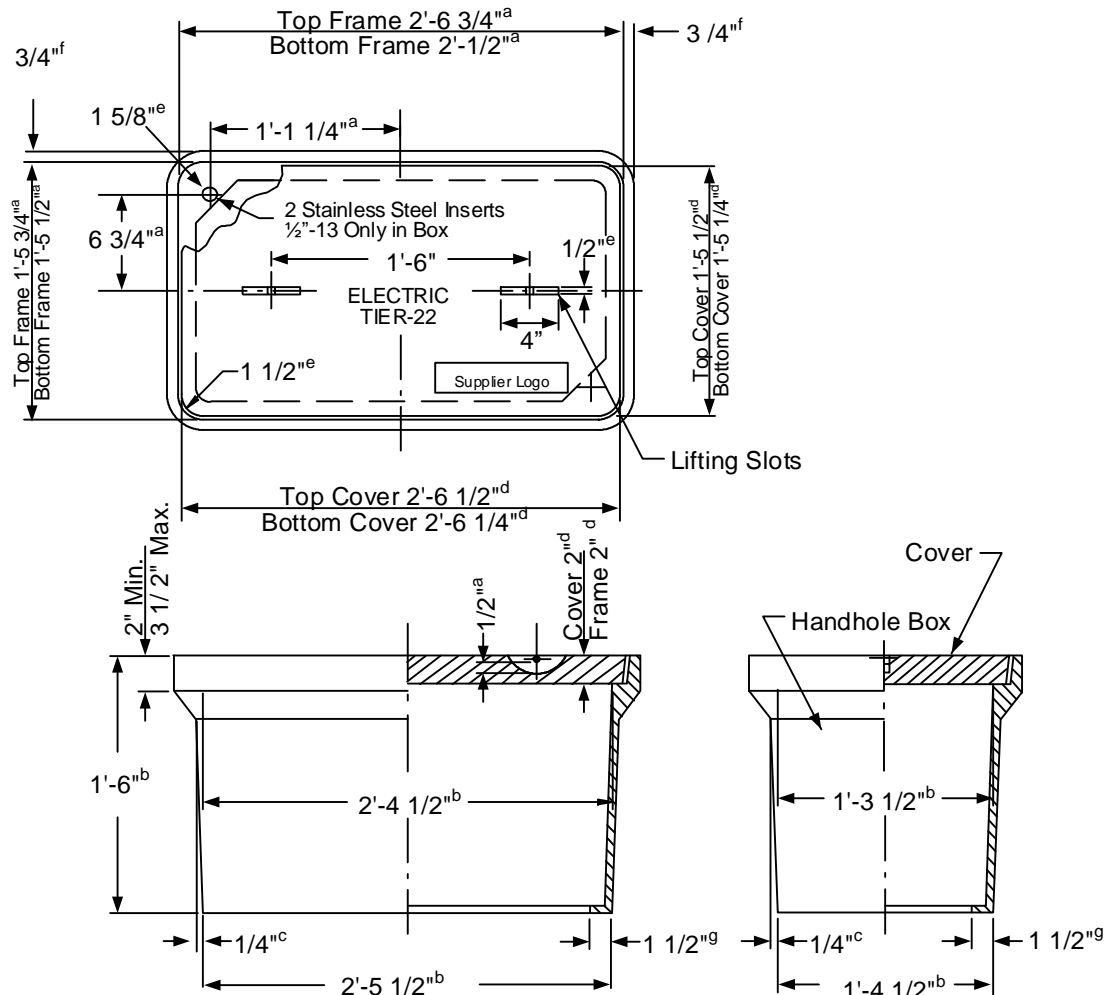


DESIGN REQUIREMENTS

TOLERANCES:

a = +1/16", -1/16"
b = +1/2", -1/2"
c = +1/8", -1/4"
d = +1/32", -1/32"
e = +1/16", -0"
f = +1/4", -0"
g = +1/2", -1/4"


APPROVED HANDHOLE		
MANUFACTURER	HANDHOLE BOX	COVER
Armorcast	A6001640PCX18	A6001947HD-NVE
Quazite	PG1730BA18J	PG1730H653
Oldcastle	17302030	17304617
Jensen Precast	100002035	100005021



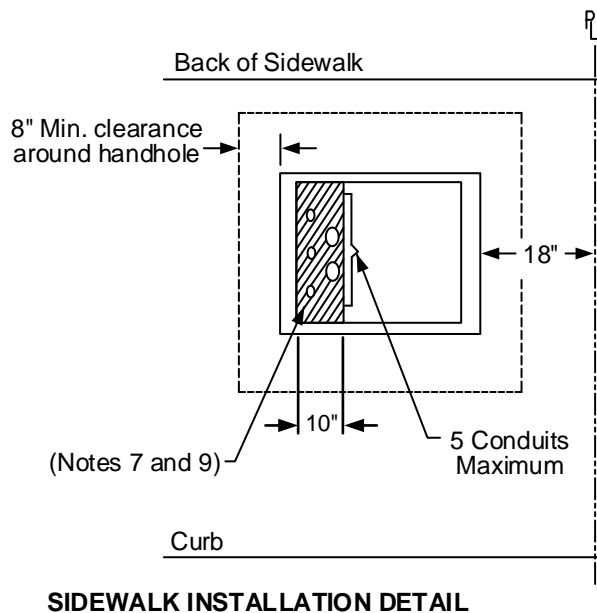
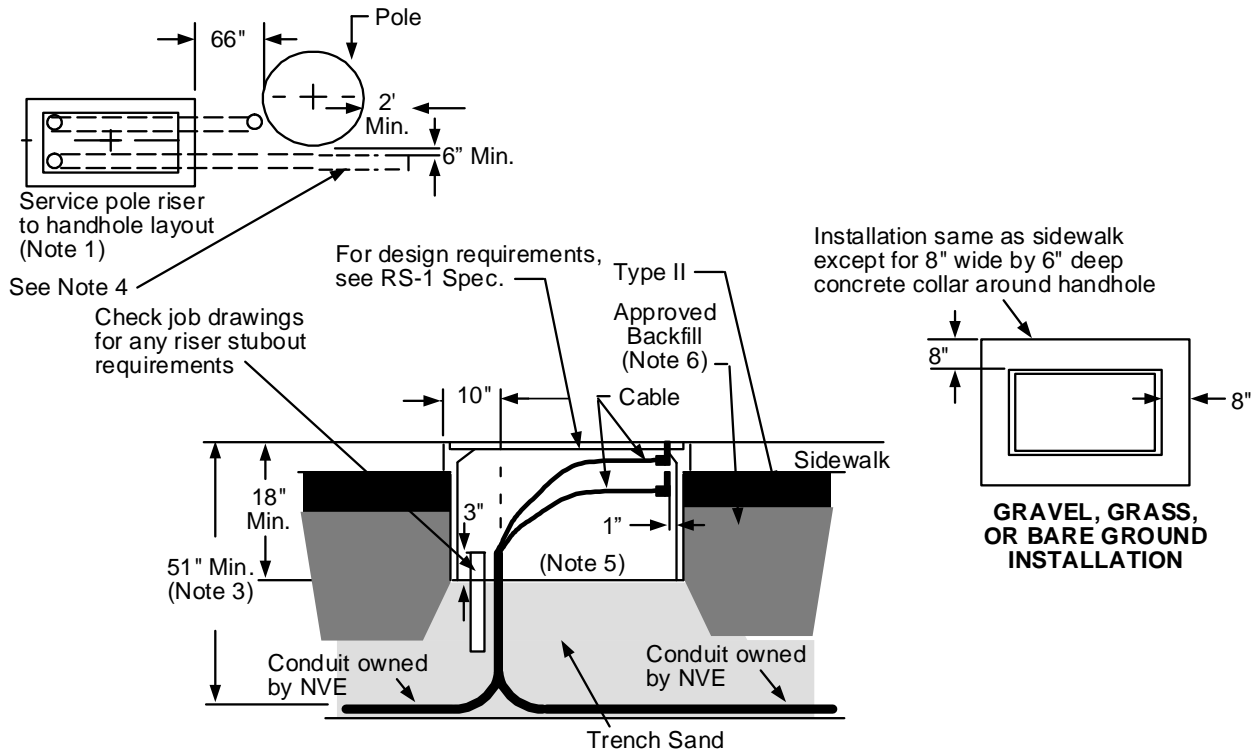
RS-1 HANDHOLE


NOTES:

- The handhole shall meet specification RS-G1.

				Electric Service Requirements		RS-1
				Handhole: Secondary Junction		
Drawn:	Eng:	Appr:	Date:			Revision: 5
AM	AM	HW	6/23			Page 1 of 4

Vaults and Boxes



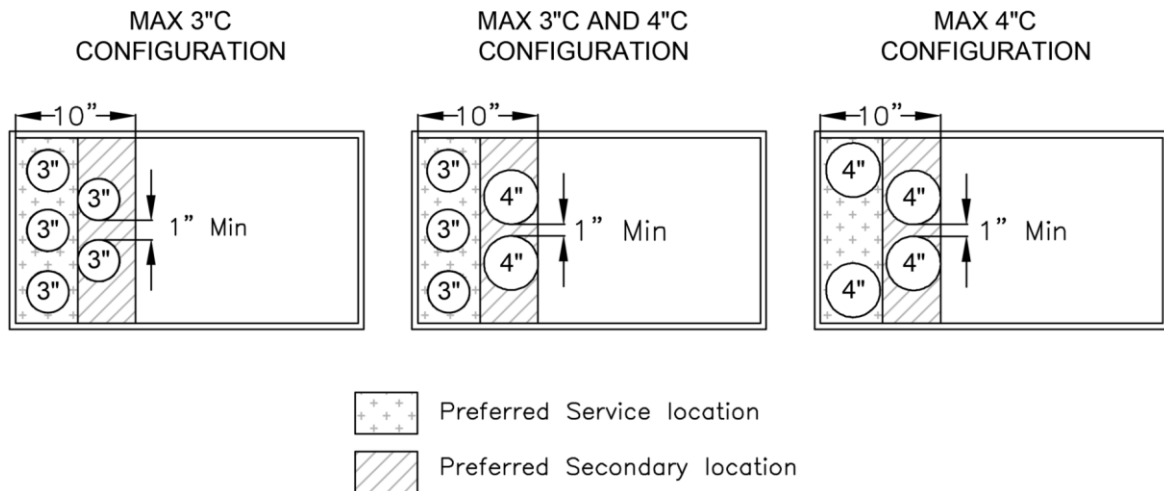
				Electric Service Requirements		RS-1
				Handhole: Secondary Junction		
Drawn:	Eng:	Appr:	Date:			Revision: 5
AM	AM	HW	6/23			Page 2 of 4

Vaults and Boxes


NOTES:

1. The NVE Inspector will place a grade stripe on the pole and stake location of handhole relative to the residential service pole riser.
2. If this structure does not meet all requirements or exhibits poor workmanship, it shall be rejected by NVE.
3. 51" minimum is for the handhole only.
4. A 3" PVC stubout is required if a future residential service or a 4" stubout for commercial service will be installed. The stubout must pass adjacent to the pole, with 6" clearance and 2' past the pole, as illustrated.
5. Cable must be trained and cut so that the backs of the connector blocks are a minimum of 1" from the end of handhole wall as illustrated.
6. For backfill requirements see RT-1.
7. Stubouts for future services must be placed per Conduit Installation Detail. All conduits must be placed on one end, within 10" of either side of junction box. Service/secondary conduit shall only be installed in non-preferred locations once preferred location have reached capacity – see Conduit Installation Detail for service/secondary preferred locations.
8. There shall be a minimum 6' clearance from the edge of handhole to the center of a fire hydrant.
9. There shall be a minimum 1" separation between conduits to facilitate the installation of debris seals.

CONDUIT TYPES (IN RS-1)	MAX 3"C (IN RS-1)	MAX 4"C (IN RS-1)
3"C	5	0
4"	0	4
3" & 4"	3	2

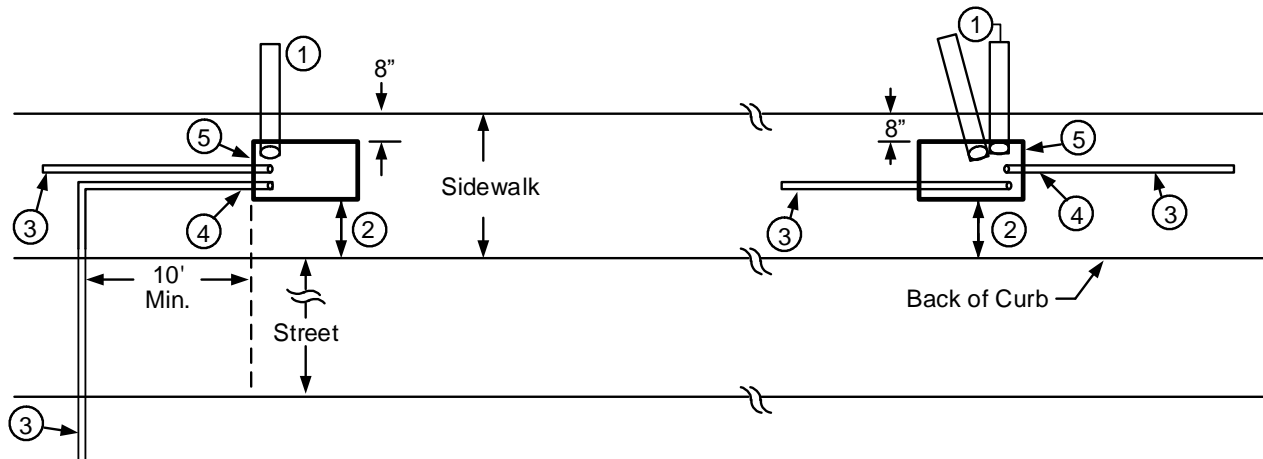


CONDUIT INSTALLATION DETAIL

				Electric Service Requirements		RS-1
				Handhole: Secondary Junction		
Drawn:	Eng:	Appr:	Date:			Revision: 5
AM	AM	HW	6/23			Page 3 of 4

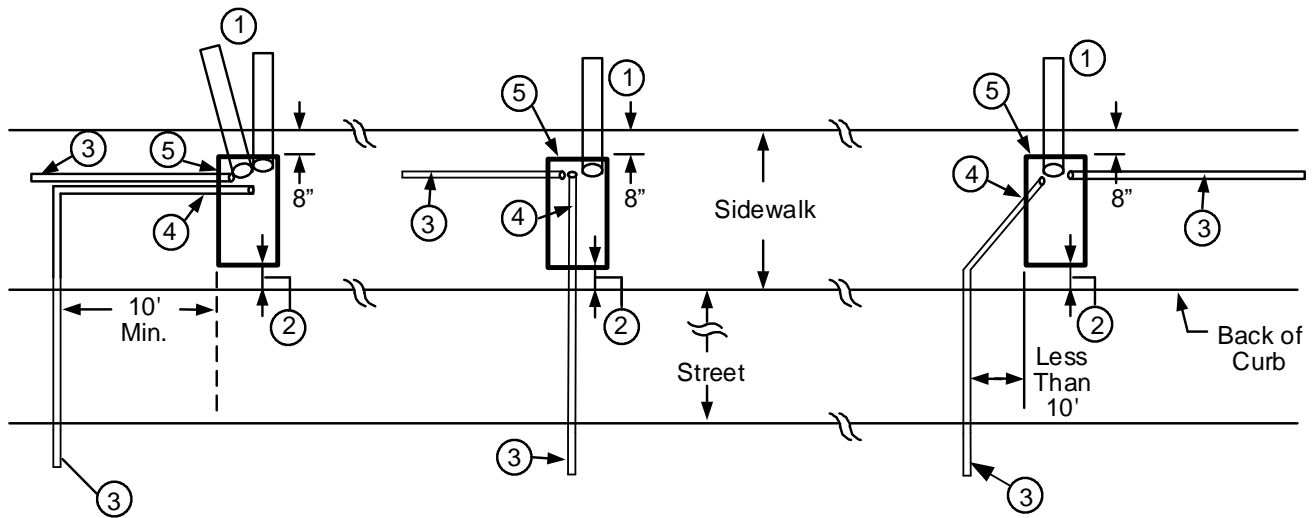
Vaults and Boxes

APPROVED HANDHOLE SIDEWALK INSTALLATION/ CONDUIT ROUTING



Note: Circled numbers reference notes below

JUNCTION BOX PLACED PARALLEL WITH 3' MINIMUM SIDEWALK




Note: Circled numbers reference notes below

JUNCTION BOX PLACED PERPENDICULAR WITH 4' MINIMUM SIDEWALK

NOTES:

1. If there are future services, the customer shall install a 3", 36" radius, 90° Schedule 40 PVC Bend stubout for each future residential service.
2. There shall be a minimum of 8" of concrete around the handhole in the sidewalk.
3. Installed secondary conduit.
4. If secondary conduit is extended into a handhole (or a pull box), a 3", 36" radius, Schedule 40 PVC bend is required.
5. Conduit in junction box to be installed per Conduit Installation Detail.

				Electric Service Requirements		RS-1
				Handhole: Secondary Junction		
Drawn:	Eng:	Appr:	Date:			
AM	AM	HW	6/23			Page 4 of 4