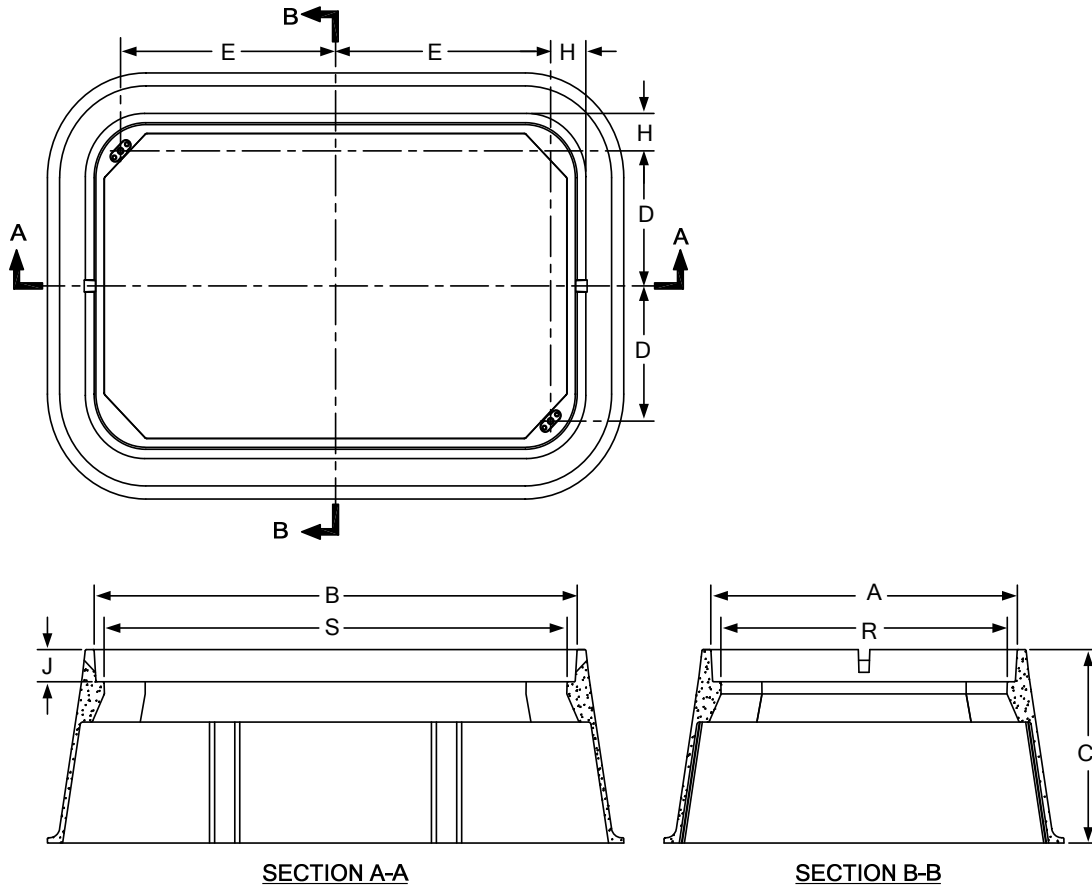


DESIGN REQUIREMENTS


| APPROVED ENCLOSURES | | |
|---------------------|------------|---------------|
| MANUFACTURER | BOX | COVER |
| QUAZITE/HUBBLE | LT3048B502 | PG3048H55217 |
| OLDCASTLE | PC 3048-18 | PC 3048-T T22 |



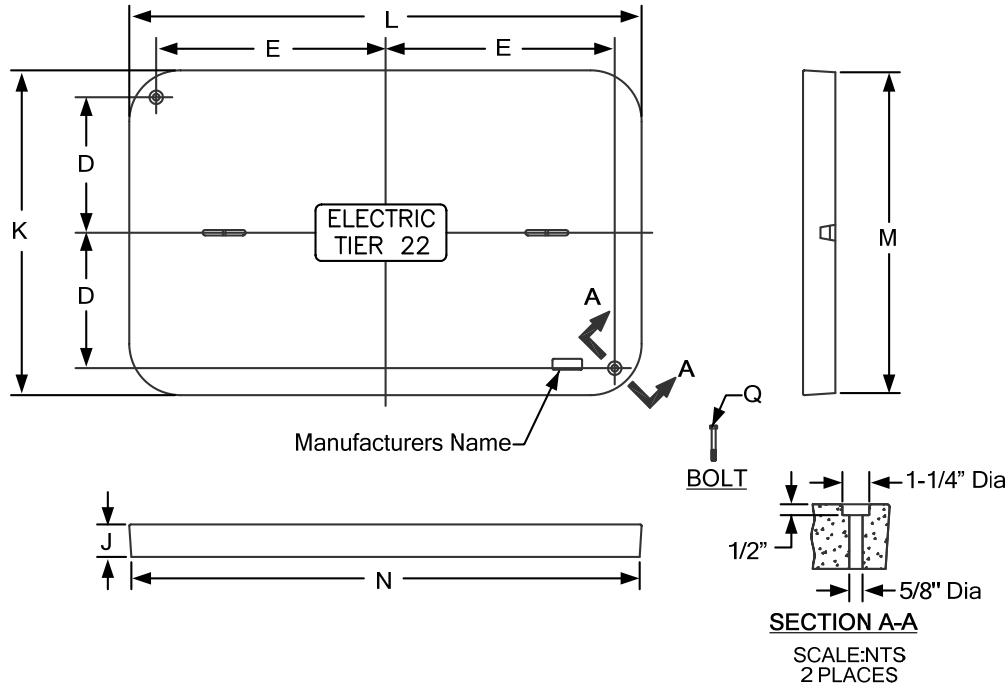
RS-3: 1/0 SPLICE ENCLOSURE DETAIL

NOTES:

1. The enclosure shall meet specification RS-G7.

| | | | | | | |
|---|------|-------|-------|--|--|-------------|
|  | | | | Electric Service Requirements | | RS-3 |
| | | | | Enclosure: 1/0 Cable Splice Enclosure | | |
| Drawn: | Eng: | Appr: | Date: | Revision: 1 | | Page 1 of 4 |
| TT | SC | DA | 1/15 | | | |

Vaults and Boxes



RS-3: 1/0 SPLICE ENCLOSURE LID DETAIL

DIMENSIONS (INCHES) – TIER 22 ENCLOSURE

| BOX | A | B | C | D | E | H | J | R | S |
|--------------|--------|--------|----|---------|---------|-------|---|--------|--------|
| 30 x 48 x 18 | 30 3/8 | 47 7/8 | 18 | 12 9/16 | 21 5/16 | 3 1/2 | 3 | 28 3/8 | 45 7/8 |

| COVER | D | E | J | K | L | M | N |
|---------|---------|---------|---|--------|--------|--------|--------|
| 30 x 48 | 12 9/16 | 21 5/16 | 3 | 30 1/8 | 47 5/8 | 29 5/8 | 47 1/8 |

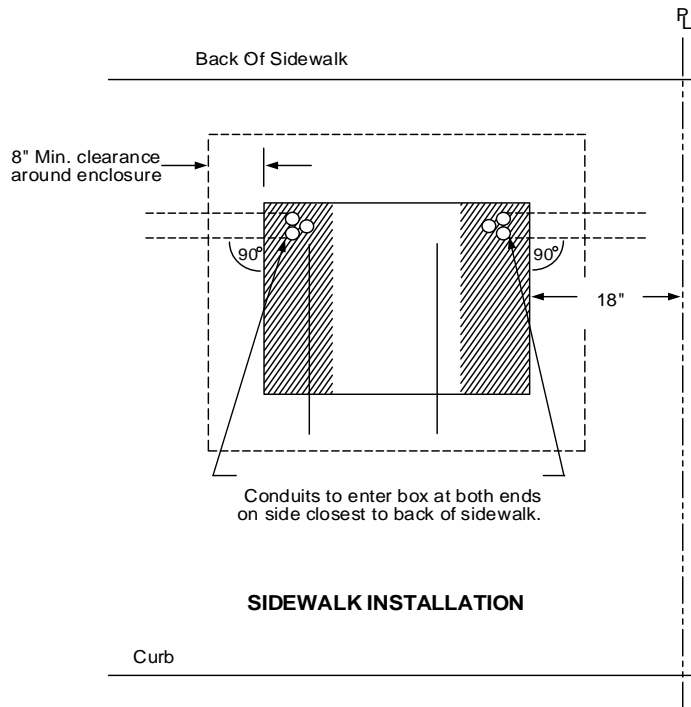
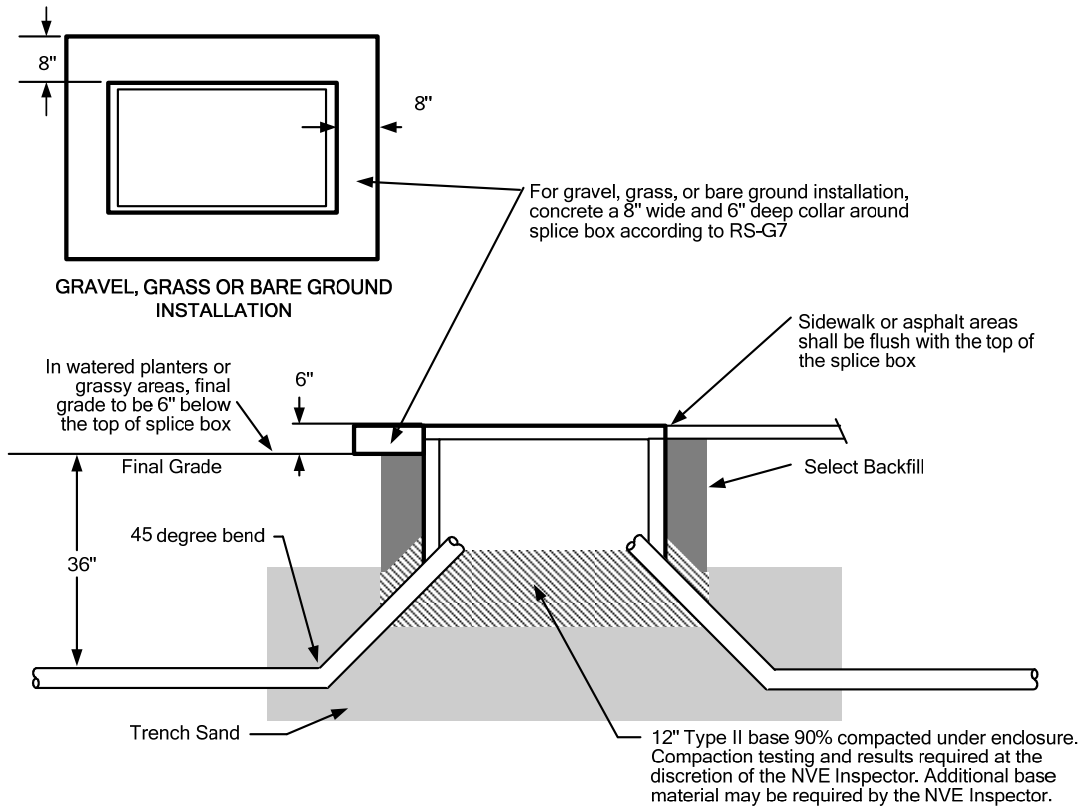
NOTES:


1. Box and cover dimensions are listed to ensure interchangeability between manufacturers
2. Bottom dimensions on most boxes are not given to enable manufacturer flexibility with materials and processes.
3. Q – Bolt, Pentahead SST 1/2-13 x 3 1/4

| | | | | | | | | |
|--------|------|-------|-------|--|--|--|--|-------------|
| | | | | Electric Service Requirements | | | | RS-3 |
| | | | | Enclosure: 1/0 Cable Splice Enclosure | | | | |
| Drawn: | Eng: | Appr: | Date: | | | | | Revision: 1 |
| TT | SC | DA | 1/15 | | | | | Page 2 of 4 |

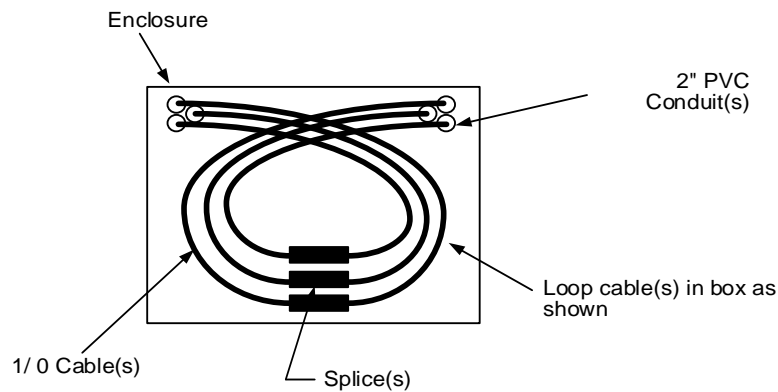
Vaults and Boxes

INSTALLATION REQUIREMENTS




| | | | | | | |
|---|------|-------|-------|--|--|-------------|
|  | | | | Electric Service Requirements | | RS-3 |
| | | | | Enclosure: 1/0 Cable Splice Enclosure | | |
| Drawn: | Eng: | Appr: | Date: | Revision: 1 | | Page 3 of 4 |
| TT | SC | DA | 1/15 | | | |

Vaults and Boxes



NOTES:

1. The RS-3 Splice Enclosure is intended for splicing 1/0 primary cables only. Use an RS-82, 83 or 85 if junction switching points are required.
2. Ground wires shall be installed. Grounding shall consist of the following:
 - A. 2-50' lengths of #2 stranded bare copper ground wires laid in the bottom of the conduit trench in opposite directions.
 - B. An additional 5' of the ground wire will be left in the box.
3. This enclosure is approved for splicing up to 3 phases of primary 1/0 cable.
4. If this structure does not meet all requirements or exhibits poor workmanship, it shall be rejected by NVE.
5. For backfill requirements see RT-1.
6. There shall be a minimum 6' clearance from the handhole to the center of a fire hydrant.
7. See RS-5 for additional clearance requirements.
8. Debris shields shall be installed on conduits where entering the enclosure.

| | | | | | | |
|---|------|-------|-------|--|--|-------------|
|  | | | | Electric Service Requirements | | RS-3 |
| | | | | Enclosure: 1/0 Cable Splice Enclosure | | |
| Drawn: | Eng: | Appr: | Date: | | | Revision: 1 |
| TT | SC | DA | 1/15 | | | Page 4 of 4 |