



## DISTRIBUTION TAP INSTALLATION

<u>STANDARD TAP</u>	<u>CU LISTING</u>	<u>PAGE NUMBER</u>
<b><u>2" TAP</u></b>		
OFF 2" PE (DTI01)	GDTI-AAAA	PAGE 3
OFF 4" PE (DTI02)	GDTI-AABA	PAGE 4
OFF 6" PE (DTI03)	GDTI-AACA	PAGE 4
OFF 2" STEEL (DTI05)	GDTI-ABDA	PAGE 5
OFF 4" STEEL (DTI05)	GDTI-ABEA	PAGE 5
OFF 8" STEEL (DTI05)	GDTI-ABFA	PAGE 5
OFF 12" STEEL (DTI05)	GDTI-ABGA	PAGE 5
<b><u>4" TAP</u></b>		
OFF 4" PE WITH 3" VALVE	GDTI-AABB	PAGE 6
OFF 6" PE (DTI04)	GDTI-AACB	PAGE 7
OFF 4" STEEL (DTI06)	GDTI-ABEB	PAGE 8
OFF 8" STEEL (DTI06)	GDTI-ABFB	PAGE 8
OFF 12" STEEL (DTI06)	GDTI-ABGB	PAGE 8
<b><u>6" TAP</u></b>		
OFF 8" STEEL (DTI07)	GDTI-ABFC	PAGE 9
OFF 12" STEEL (DTI07)	GDTI-ABGC	PAGE 9
<b><u>8" TAP</u></b>		
OFF 8" STEEL (DTI08)	GDTI-ACFD	PAGE 10
OFF 12" STEEL (DTI08)	GDTI-ACGD	PAGE 10
<b><u>12" TAP</u></b>		
OFF 12" STEEL (DTI09)	GDTI-ACGE	PAGE 11

	VOLUME 15 – ENGINEERING & CONSTRUCTION STANDARD			GDTI-XXXX
	DISTRIBUTION TAP INSTALLATION INDEX			
Drawn:	Eng:	Appr:	Date:	Revision: 1
CM	CLD		06/2017	Page 1 of 19

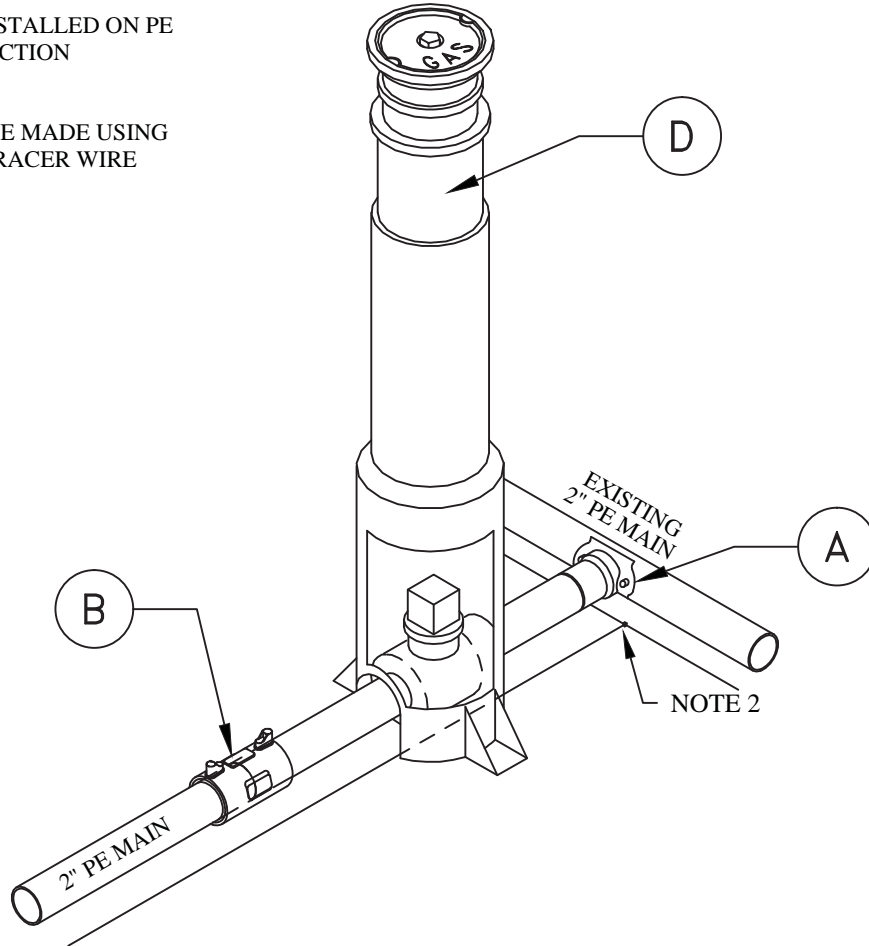
## DISTRIBUTION TAP INSTALLATION

	<u>CU LISTING</u>	<u>PAGE NUMBER</u>
<b><u>REVERSE TAP</u></b>		
<b><u>2" TAP</u></b>		
OFF 2" PE (DTI10)	GDTI-BAAA	PAGE 12
OFF 4" PE (DTI11)	GDTI-BABA	PAGE 13
OFF 6" PE (DTI12)	GDTI-BACA	PAGE 13
OFF 2" STEEL (DTI14)	GDTI-BBDA	PAGE 14
OFF 4" STEEL (DTI14)	GDTI-BBEA	PAGE 14
OFF 8" STEEL (DTI14)	GDTI-BBFA	PAGE 14
OFF 12" STEEL (DTI14)	GDTI-BBGA	PAGE 14
<b><u>4" TAP</u></b>		
OFF 6" PE (DTI13)	GDTI-BACB	PAGE 15
OFF 4" STEEL (DTI15)	GDTI-BBEB	PAGE 16
OFF 8" STEEL (DTI15)	GDTI-BBGB	PAGE 16
OFF 12" STEEL (DTI15)	GDTI-BBFB	PAGE 16
<b><u>6" TAP</u></b>		
OFF 8" STEEL (DTI16)	GDTI-BBFC	PAGE 17
OFF 12" STEEL (DTI16)	GDTI-BBGC	PAGE 17
<b><u>8" TAP</u></b>		
OFF 8" STEEL (DTI17)	GDTI-BCFD	PAGE 18
OFF 12" STEEL (DTI17)	GDTI-BCGD	PAGE 18
<b><u>12" TAP</u></b>		
OFF 12" STEEL (DTI18)	GDTI-BCGE	PAGE 19


	VOLUME 15 – ENGINEERING & CONSTRUCTION STANDARD	GDTI-XXXX								
	DISTRIBUTION TAP INSTALLATION INDEX	Revision: 1 Page 2 of 19								
<table border="1" style="width: 100%; border-collapse: collapse;"> <tr> <td style="width: 25%;">Drawn:</td> <td style="width: 25%;">Eng:</td> <td style="width: 25%;">Appr:</td> <td style="width: 25%;">Date:</td> </tr> <tr> <td>CM</td> <td>CLD</td> <td></td> <td>06/2017</td> </tr> </table>	Drawn:	Eng:	Appr:	Date:	CM	CLD		06/2017		
Drawn:	Eng:	Appr:	Date:							
CM	CLD		06/2017							

NOTES:

- 1) TRACER WIRE TO BE INSTALLED ON PE PIPE PER GAS CONSTRUCTION SPECIFICATIONS.
- 2) ALL WIRE SPLICES TO BE MADE USING CURRENT APPROVED TRACER WIRE CONNECTOR.

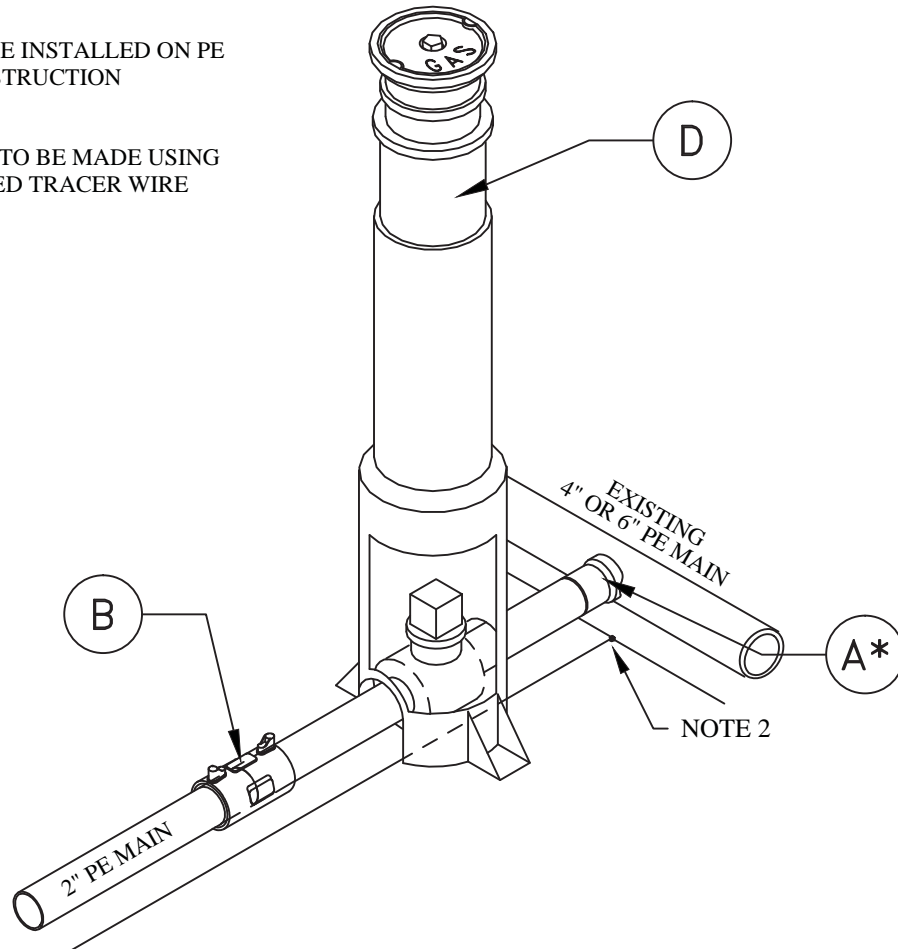


MATERIALS LIST - DTI01G			
ITEM	STOCK #	QTY	DESCRIPTION
A	45-5005	1.0	SADDLE BRANCH 2" X 2" PE3408 ELECTROFUSION
B	45-0642	1.0	COUPLING ELECTROFUSION 2" IPS
C	43-2030	1.0	VALVE 2" PE3408
D	43-0018	1.0	BOX 1-1/4" AND 2" PE VALVES TRAFFIC RATED H-20
E	45-7000	1.0	TRACER WIRE CONNECTOR
F	45-7500	10.0	WIRE, TRACER YELLOW #14


	VOLUME 15 - ENGINEERING & CONSTRUCTION STANDARD		GDTI-AAAA								
	<b>DISTRIBUTION TAP INSTALLATIONS</b> <b>2" TAP OFF 2" PE</b>										
<table border="1"> <tr> <th>Drawn:</th> <th>Eng:</th> <th>Appr:</th> <th>Date:</th> </tr> <tr> <td>CM</td> <td>CLD</td> <td>XX</td> <td>5/2017</td> </tr> </table>	Drawn:	Eng:	Appr:	Date:	CM	CLD	XX	5/2017			Revision: X Page 3 of 19
Drawn:	Eng:	Appr:	Date:								
CM	CLD	XX	5/2017								

NOTES:

- 1) TRACER WIRE TO BE INSTALLED ON PE PIPE PER GAS CONSTRUCTION SPECIFICATIONS.
- 2) ALL WIRE SPLICES TO BE MADE USING CURRENT APPROVED TRACER WIRE CONNECTOR.



MATERIALS LIST - DTI02G, DTI03G			
ITEM	STOCK #	QTY	DESCRIPTION
A*	45-5010	1.0	AABA - SADDLE BRANCH PLEXCO 4" X 2" PE3408 BUTT FUSION
A*	45-5015	1.0	AACA - SADDLE BRANCH PLEXCO 6" X 2" PE3408 BUTT FUSION
B	45-0642	1.0	COUPLING ELECTROFUSION 2" IPS
C	43-2030	1.0	VALVE 2" PE3408
D	43-0018	1.0	BOX 1-1/4" AND 2" PE VALVES TRAFFIC RATED H-20
E	45-7000	1.0	TRACER WIRE CONNECTOR
F	45-7500	10.0	WIRE, TRACER YELLOW #14

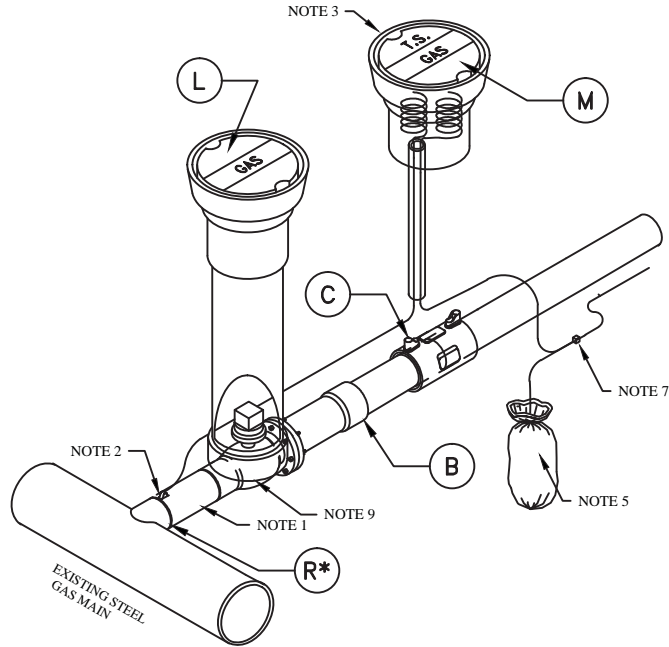
	<b>VOLUME 15 - ENGINEERING &amp; CONSTRUCTION STANDARD</b>	<b>GDTI-AABA</b> <b>GDTI-AACA</b>								
	<b>DISTRIBUTION TAP INSTALLATIONS</b> <b>2" TAP OFF 4" OR 6" PE</b>									
<table border="1" style="width: 100%; border-collapse: collapse;"> <tr> <td style="width: 25%;">Drawn:</td> <td style="width: 25%;">Eng:</td> <td style="width: 25%;">Appr:</td> <td style="width: 25%;">Date:</td> </tr> <tr> <td>CM</td> <td>CLD</td> <td>XX</td> <td>5/2017</td> </tr> </table>	Drawn:	Eng:	Appr:	Date:	CM	CLD	XX	5/2017	Revision: X Page 4 of 19	
Drawn:	Eng:	Appr:	Date:							
CM	CLD	XX	5/2017							

# SECTION 5: GAS CONSTRUCTION DRAWINGS

# GDTI-ABDA/ABEA/ ABFA/ABGA

**NOTES:**

- 1) LENGTH OF PUP TO BE THREE INCHES. SADDLE PUP TO FIT STEEL MAIN. DO NOT SADDLE VALVE END.
- 2) ALL WIRE CONNECTIONS TO STEEL PIPE TO BE CADWELDED AND COATED WITH CURRENT APPROVED COATING.
- 3) TEST LEAD WIRE TO BE LONG ENOUGH TO EXTEND ONE FOOT ABOVE GROUND LEVEL AND SHALL TERMINATE IN VALVE BOX.
- 4) USE 3/4" PVC OR PE AS A LEAD WIRE CONDUCTOR PIPE PLACED APPROXIMATELY 6" ABOVE CARRIER PIPE AND INTO TEST STATION BOX.
- 5) ANODE CAN BE INSTALLED VERTICALLY OR HORIZONTALLY BUT MUST HAVE A MINIMAL RADIAL CLEARANCE OF TWO FEET FROM THE STEEL PIPE AND BE POSITIONED AT AN ELEVATION NO HIGHER THAN THE STEEL PIPE.
- 6) TRACER WIRE TO BE INSTALLED ON STEEL PIPE AND ON PE PIPE PER GAS CONSTRUCTION SPECIFICATIONS.
- 7) ALL WIRE SPLICES TO BE MADE USING CURRENT APPROVED TRACER WIRE CONNECTOR.
- 8) COAT ALL STEEL PIPE AND VALVE WITH CURRENT APPROVED COATING.
- 9) INSTALL VALVE BOX STABILIZER.
- 10) WELD-O-LET PART NUMBER IS DEPENDANT ON MAIN SIZE (SEE R\*)



MATERIALS LIST - DTI05G			
ITEM	STOCK #	QTY	DESCRIPTION
A	43-0227	1.0	VALVE 2" WELD X FLANGE
B	45-6030	1.0	TRANSITION FITTING FLANGED 2" IPS PE3408
C	45-0642	1.0	COUPLING ELECTROFUSION 1" IPS
D	41-0200	1.0	PIPE 2" STEEL FBE API5L GRADE B
E	47-0040	1.0	GASKET COMPRESSED FIBER 2"
F	47-0340	4.0	BOLT MACHINE BLK HEX HEAD W/HEX NUT 5/8" X 2-1/2"
G	47-0020	1.0	ANODE MAGNESIUM 3 LB. WITH COVERING
H	45-7600	10.0	WIRE, TRACER BLACK #14
I	45-7500	10.0	WIRE, TRACER YELLOW #14
J	45-7000	1.0	TRACER WIRE CONNECTOR
K	43-0010	2.0	BOX 6" VALVE CAST IRON
L	43-0095	1.0	COVER BOX VALVE GAS 6"
M	43-0090	1.0	TS BOX COVER
N	41-3000	3.0	PIPE PVC 6" SEWER 6.275 O.D. SDR 35 FOR VALVES
O	43-0034	1.0	VALVE BOX STABILIZER
P	47-0038	1.0	CADWELD CHARGE
Q	47-0037	1.0	CADWELD SLEEVE
R*	45-6502	1.0	WELD-O-LET, 2" BRANCH, 2' MAIN
R*	45-6504	1.0	WELD-O-LET, 2" BRANCH, 4-6' MAIN
R*	45-6506	1.0	WELD-O-LET, 2" BRANCH, 8-18' MAIN

COATING MATERIALS LIST		
STOCK #	QTY	DESCRIPTION
47-0280	0.5	VALVE PRIMER
47-0276	1.0	VALVE FILLER
47-0272	5.0	2" WIDE WAX WRAP TAPE
47-0278	5.0	PLASTIC OUTER WRAP
47-0600	1.0	CADWELD "HANDY CAP"

Drawn:	Eng:	Appr:	Date:
CM	CLD	XX	5/2017

VOLUME 15 - ENGINEERING & CONSTRUCTION STANDARD

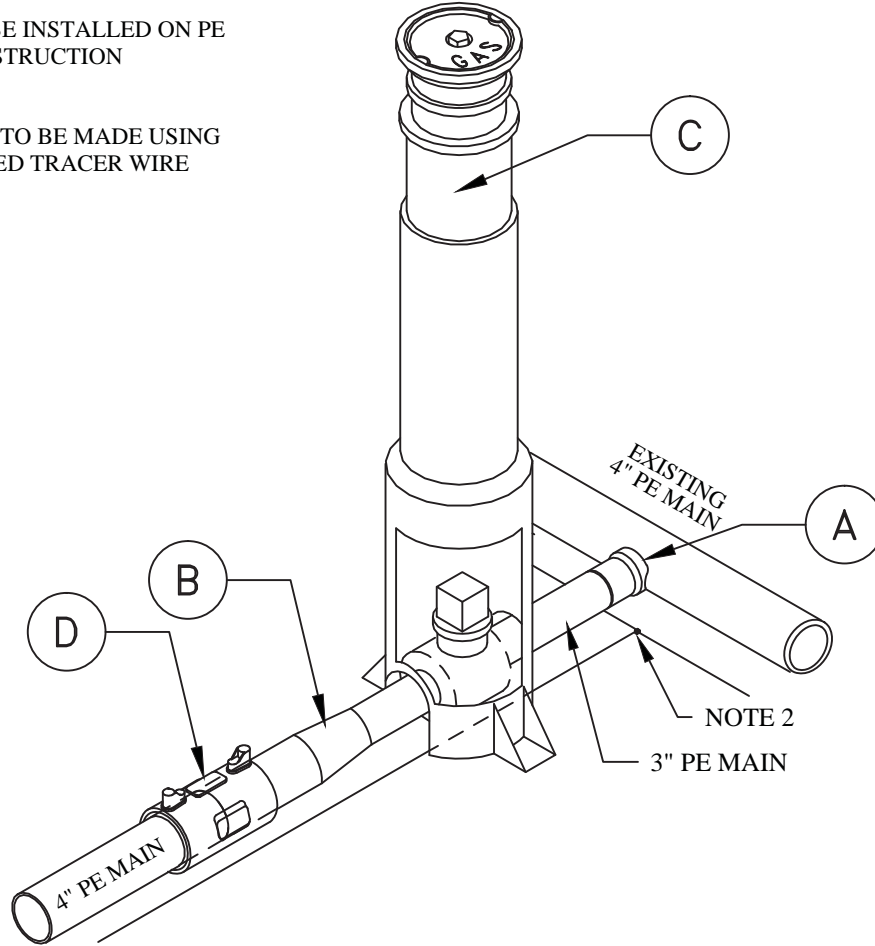
**DISTRIBUTION TAP INSTALLATIONS**  
**2" TAP OFF 2", 4", 8", OR 12" STEEL**

**GDTI-ABDA**  
**GDTI-ABEA**  
**GDTI-ABFA**  
**GDTI-ABGA**


Revision: X  
 Page 5 of 19

NOTES:

- 1) TRACER WIRE TO BE INSTALLED ON PE PIPE PER GAS CONSTRUCTION SPECIFICATIONS.
- 2) ALL WIRE SPLICES TO BE MADE USING CURRENT APPROVED TRACER WIRE CONNECTOR.

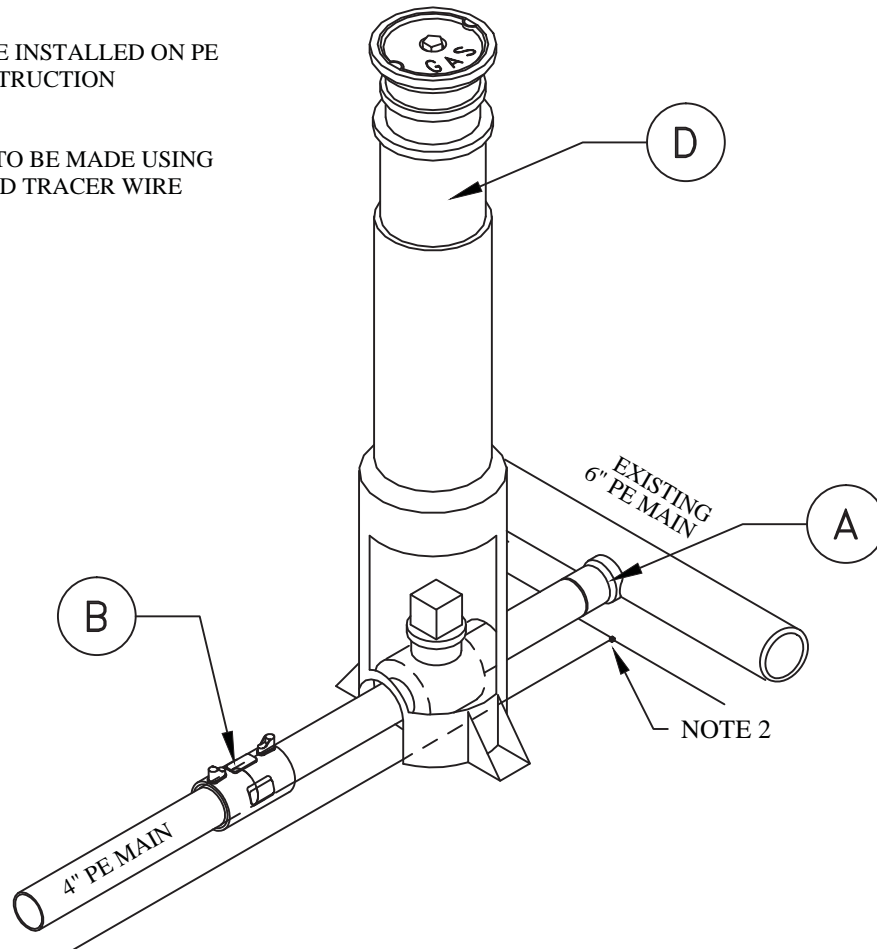


MATERIALS LIST - DTI04.1G			
ITEM	STOCK #	QTY	DESCRIPTION
A	45-5011	1.0	SADDLE BRANCH 4" X 3" BUTT FUSION
B	43-2037	1.0	VALVE 3" PE3408
C	43-0020	1.0	BOX 3" OR 4" PE VALVES TRAFFIC RATED H-20
D	45-0644	1.0	4" IPS COUPLING ELECTROFUSION
E	45-7000	1.0	TRACER WIRE CONNECTOR
F	45-7500	10.0	WIRE, TRACER YELLOW #14
G	45-1758	1.0	4" IPS X 3" IPS REDUCER, PE3408 BUTT FUSION


	<b>VOLUME 15 - ENGINEERING &amp; CONSTRUCTION STANDARD</b>	<b>GDTI-AABB</b>								
	<b>DISTRIBUTION TAP INSTALLATIONS</b> <b>4" TAP OFF 4" PE WITH 3" VALVE</b>									
<table border="1" style="width: 100%; border-collapse: collapse;"> <tr> <td style="width: 25%;">Drawn:</td> <td style="width: 25%;">Eng:</td> <td style="width: 25%;">Appr:</td> <td style="width: 25%;">Date:</td> </tr> <tr> <td>CM</td> <td>CLD</td> <td>XX</td> <td>5/2017</td> </tr> </table>	Drawn:	Eng:	Appr:	Date:	CM	CLD	XX	5/2017	Revision: X Page 6 of 19	
Drawn:	Eng:	Appr:	Date:							
CM	CLD	XX	5/2017							

NOTES:

- 1) TRACER WIRE TO BE INSTALLED ON PE PIPE PER GAS CONSTRUCTION SPECIFICATIONS.
- 2) ALL WIRE SPLICES TO BE MADE USING CURRENT APPROVED TRACER WIRE CONNECTOR.

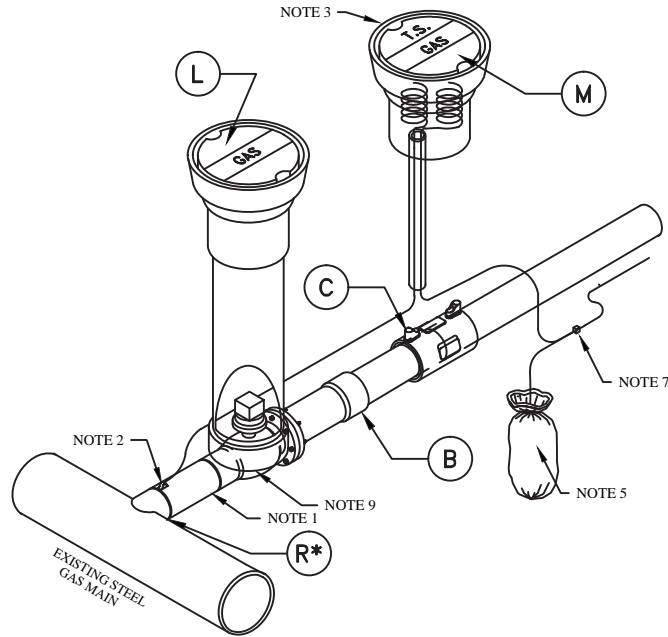


MATERIALS LIST - DTI04G			
ITEM	STOCK #	QTY	DESCRIPTION
A	45-5016	1.0	SADDLE BRANCH PLEXCO 6" X 4" PE3408 BUTT FUSION
B	45-0644	1.0	COUPLING ELECTROFUSION 4" IPS
C	43-2040	1.0	VALVE 4" PE3408
D	43-0020	1.0	BOX 3" & 4" PE VALVES TRAFFIC RATED H-20
E	45-7000	1.0	TRACER WIRE CONNECTOR
F	45-7500	10.0	WIRE, TRACER YELLOW #14

	VOLUME 15 - ENGINEERING & CONSTRUCTION STANDARD			GDTI-AACB								
	<b>DISTRIBUTION TAP INSTALLATIONS</b> <b>4" TAP OFF 6" PE</b>											
<table border="1"> <tr> <th>Drawn:</th> <th>Eng:</th> <th>Appr:</th> <th>Date:</th> </tr> <tr> <td>CM</td> <td>CLD</td> <td>XX</td> <td>5/2017</td> </tr> </table>	Drawn:	Eng:	Appr:	Date:	CM	CLD	XX	5/2017				Revision: X Page 7 of 19
Drawn:	Eng:	Appr:	Date:									
CM	CLD	XX	5/2017									

NOTES:

- 1) LENGTH OF PUP TO BE THREE INCHES. SADDLE PUP TO FIT STEEL MAIN. DO NOT SADDLE VALVE END.
- 2) ALL WIRE CONNECTIONS TO STEEL PIPE TO BE CADWELDED AND COATED WITH CURRENT APPROVED COATING.
- 3) TEST LEAD WIRE TO BE LONG ENOUGH TO EXTEND ONE FOOT ABOVE GROUND LEVEL AND SHALL TERMINATE IN VALVE BOX.
- 4) USE 3/4" PVC OR PE AS A LEAD WIRE CONDUCTOR PIPE PLACED APPROXIMATELY 6" ABOVE CARRIER PIPE AND INTO TEST STATION BOX.
- 5) ANODE CAN BE INSTALLED VERTICALLY OR HORIZONTALLY BUT MUST HAVE A MINIMAL RADIAL CLEARANCE OF TWO FEET FROM THE STEEL PIPE AND BE POSITIONED AT AN ELEVATION NO HIGHER THAN THE STEEL PIPE.
- 6) TRACER WIRE TO BE INSTALLED ON STEEL PIPE AND ON PE PIPE PER GAS CONSTRUCTION SPECIFICATIONS.
- 7) ALL WIRE SPLICES TO BE MADE USING CURRENT APPROVED TRACER WIRE CONNECTOR.
- 8) COAT ALL STEEL PIPE AND VALVE WITH CURRENT APPROVED COATING.
- 9) INSTALL VALVE BOX STABILIZER.
- 10) WELD-O-LET PART NUMBER IS DEPENDANT ON MAIN SIZE (SEE R\*)



MATERIALS LIST - DTI06G			
ITEM	STOCK #	QTY	DESCRIPTION
A	43-0237	1.0	VALVE 4" WELD X FLANGE
B	45-6040	1.0	TRANSITION FITTING FLANGED 4" IPS PE3408
C	45-0644	1.0	COUPLING ELECTROFUSION 4" IPS
D	41-0210	1.0	PIPE 4" STEEL FBE AP15L GRADE B
E	47-0050	1.0	GASKET COMPRESSED FIBER 4"
F	47-0360	8.0	BOLT MACHINE BLK HEX HEAD W/HEX NUT 5/8" X 3"
G	47-0020	1.0	ANODE MAGNESIUM 3 LB. WITH COVERING
H	45-7600	10.0	WIRE, TRACER BLACK #14
I	45-7500	10.0	WIRE, TRACER YELLOW #14
J	45-7000	1.0	TRACER WIRE CONNECTOR
K	43-0010	2.0	BOX 6" VALVE CAST IRON
L	43-0095	1.0	COVER BOX VALVE GAS 6"
M	43-0090	1.0	TS BOX COVER
N	41-3000	3.0	PIPE PVC 6" SEWER 6.275 O.D. SDR 35 FOR VALVES
O	43-0034	1.0	VALVE BOX STABILIZER
P	47-0038	1.0	CADWELD CHARGE
Q	47-0037	1.0	CADWELD SLEEVE
R*	45-6512	1.0	WELD-O-LET, 4" BRANCH, 4" MAIN
R*	45-6514	1.0	WELD-O-LET, 4" BRANCH, 8" MAIN
R*	45-6516	1.0	WELD-O-LET, 4" BRANCH, 12-18" MAIN

COATING MATERIALS LIST		
STOCK #	QTY	DESCRIPTION
47-0280	1.0	VALVE PRIMER
47-0276	2.0	VALVE FILLER
47-0272	10.0	2" WIDE WAX WRAP TAPE
47-0278	10.0	PLASTIC OUTER WRAP
47-0600	1.0	CADWELD "HANDY CAP"

Drawn:	Eng:	Appr:	Date:
CM	CLD	XX	5/2017

VOLUME 15 - ENGINEERING & CONSTRUCTION STANDARD

**DISTRIBUTION TAP INSTALLATIONS**

**4" TAP OFF 4", 8", OR 12" STEEL**

**GDTI-ABEB**

**GDTI-ABFB**

**GDTI-ABGB**

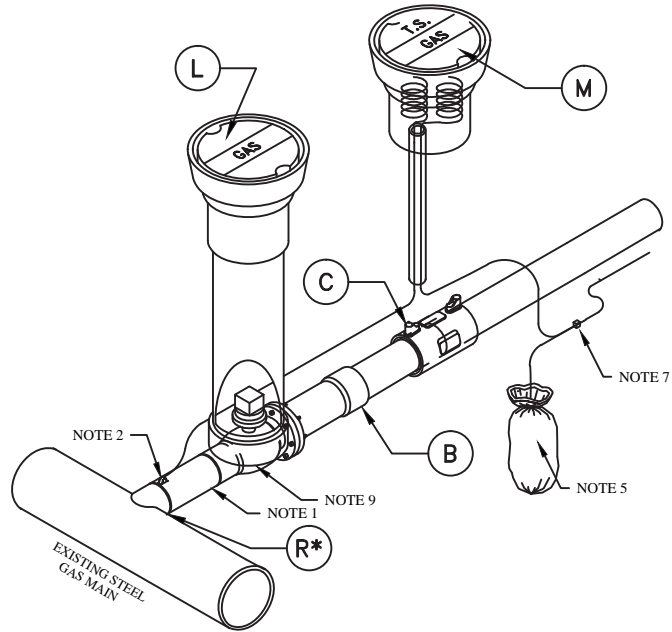
Revision: X

Page 8 of 19



NOTES:

- 1) LENGTH OF PUP TO BE THREE INCHES. SADDLE PUP TO FIT STEEL MAIN. DO NOT SADDLE VALVE END.
- 2) ALL WIRE CONNECTIONS TO STEEL PIPE TO BE CADWELDED AND COATED WITH CURRENT APPROVED COATING.
- 3) TEST LEAD WIRE TO BE LONG ENOUGH TO EXTEND ONE FOOT ABOVE GROUND LEVEL AND SHALL TERMINATE IN VALVE BOX.
- 4) USE 3/4" PVC OR PE AS A LEAD WIRE CONDUCTOR PIPE PLACED APPROXIMATELY 6" ABOVE CARRIER PIPE AND INTO TEST STATION BOX.
- 5) ANODE CAN BE INSTALLED VERTICALLY OR HORIZONTALLY BUT MUST HAVE A MINIMAL RADIAL CLEARANCE OF TWO FEET FROM THE STEEL PIPE AND BE POSITIONED AT AN ELEVATION NO HIGHER THAN THE STEEL PIPE.
- 6) TRACER WIRE TO BE INSTALLED ON STEEL PIPE AND ON PE PIPE PER GAS CONSTRUCTION SPECIFICATIONS.
- 7) ALL WIRE SPLICES TO BE MADE USING CURRENT APPROVED TRACER WIRE CONNECTOR.
- 8) COAT ALL STEEL PIPE AND VALVE WITH CURRENT APPROVED COATING.
- 9) INSTALL VALVE BOX STABILIZER.
- 10) WELD-O-LET PART NUMBER IS DEPENDANT ON MAIN SIZE (SEE R\*)



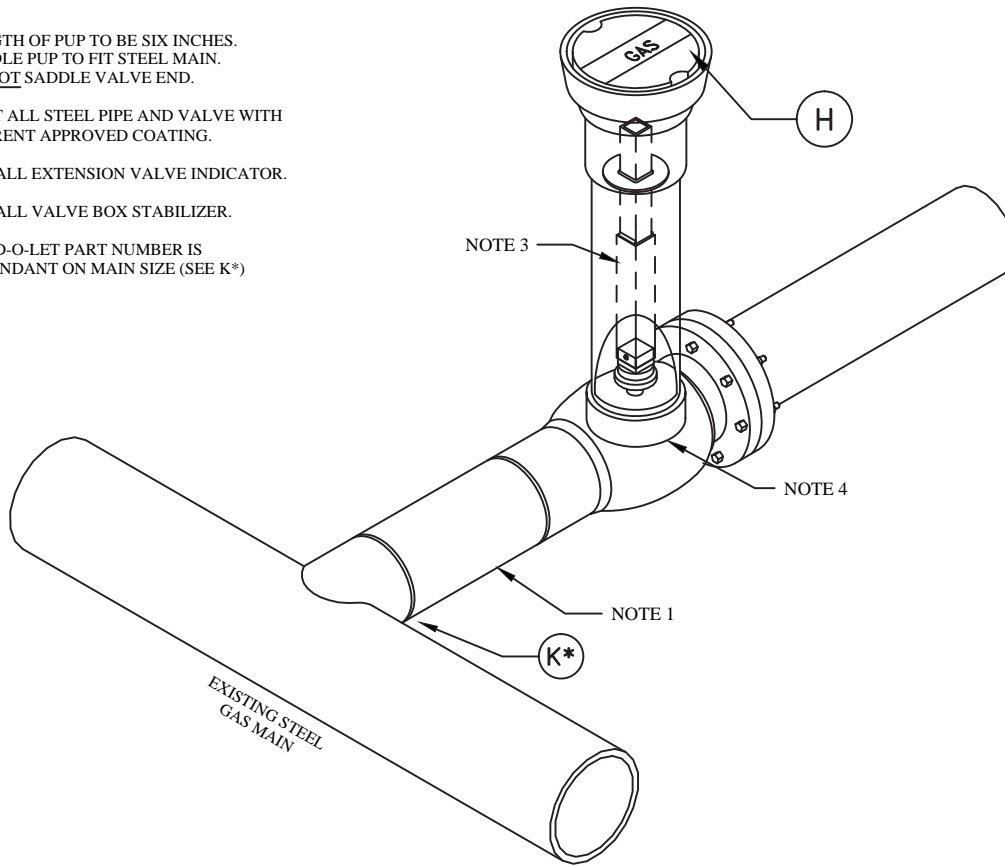
MATERIALS LIST - DTI07G			
ITEM	STOCK #	QTY	DESCRIPTION
A	43-0239	1.0	VALVE 6" WELD X FLANGE
B	45-6050	1.0	TRANSITION FITTING FLANGED 6" IPS PE3408
C	45-0646	1.0	COUPLING ELECTROFUSION 6" IPS
D	41-0215	1.0	PIPE 6" FBE APISL GRADE B
E	47-0055	1.0	GASKET COMPRESSED FIBER 6"
F	47-0390	8.0	BOLT MACHINE BLK HEX HEAD W/HEX NUT 3/4" X 3-1/4"
G	47-0020	1.0	ANODE MAGNESIUM 3 LB. WITH COVERING
H	45-7600	10.0	WIRE, TRACER BLACK #14
I	45-7500	10.0	WIRE, TRACER YELLOW #14
J	45-7000	1.0	TRACER WIRE CONNECTOR
K	43-0010	2.0	BOX 6" VALVE CAST IRON
L	43-0095	1.0	COVER BOX VALVE GAS 6"
M	43-0090	1.0	TS BOX COVER
N	41-3000	3.0	PIPE PVC 6" SEWER 6.275 O.D. SDR 35 FOR VALVES
O	43-0034	1.0	VALVE BOX STABILIZER
P	47-0038	1.0	CADWELD CHARGE
Q	47-0037	1.0	CADWELD SLEEVE
R*	45-6522	1.0	WELD-O-LET, 6" BRANCH, 8" MAIN
R*	45-6524	1.0	WELD-O-LET, 6" BRANCH, 12" MAIN
R*	45-6526	1.0	WELD-O-LET, 6" BRANCH, 18" MAIN

COATING MATERIALS LIST		
STOCK #	QTY	DESCRIPTION
47-0280	1.0	VALVE PRIMER
47-0276	2.0	VALVE FILLER
47-0272	10.0	2" WIDE WAX WRAP TAPE
47-0278	10.0	PLASTIC OUTER WRAP
47-0600	1.0	CADWELD "HANDY CAP"

	VOLUME 15 - ENGINEERING & CONSTRUCTION STANDARD	GDTI-ABFC GDTI-ABGC							
	DISTRIBUTION TAP INSTALLATIONS 6" TAP OFF 8" OR 12" STEEL								
<table border="1" style="width: 100%; border-collapse: collapse;"> <tr> <td style="width: 25%;">Drawn:</td> <td style="width: 25%;">Eng:</td> <td style="width: 25%;">Appr:</td> <td style="width: 25%;">Date:</td> </tr> <tr> <td>CM</td> <td>CLD</td> <td>XX</td> <td>5/2017</td> </tr> </table>	Drawn:	Eng:	Appr:	Date:	CM	CLD	XX	5/2017	Revision: X Page 9 of 19
Drawn:	Eng:	Appr:	Date:						
CM	CLD	XX	5/2017						

NOTES:

- 1) LENGTH OF PUP TO BE SIX INCHES.  
SADDLE PUP TO FIT STEEL MAIN.  
DO NOT SADDLE VALVE END.
- 2) COAT ALL STEEL PIPE AND VALVE WITH  
CURRENT APPROVED COATING.
- 3) INSTALL EXTENSION VALVE INDICATOR.
- 4) INSTALL VALVE BOX STABILIZER.
- 5) WELD-O-LET PART NUMBER IS  
DEPENDANT ON MAIN SIZE (SEE K\*)



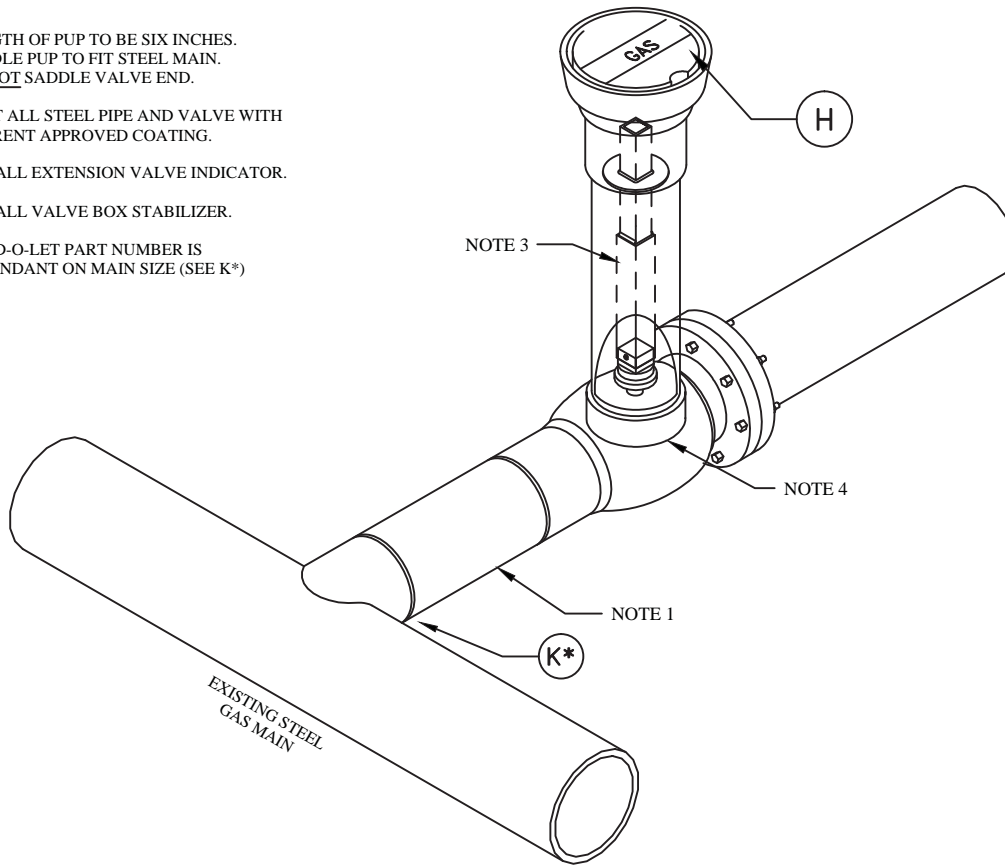
MATERIALS LIST - DTI08G			
ITEM	STOCK #	QTY	DESCRIPTION
A	43-0247	1.0	VALVE 8" WELD X FLANGE
B	43-0035	1.0	EXTENSION STEEL VALVE INDICATOR
C	45-1030	1.0	FLANGE SLIP-ON WELDING 8"
D	41-0220	1.0	PIPE 8" STEEL FBE API5L GRADE B/X42/X52
E	47-0060	1.0	GASKET COMPRESSED FIBER 8"
F	47-0400	8.0	BOLT MACHINE BLK HEX HEAD W/HEX NUT 3/4" X 3-1/2"
G	43-0010	1.0	BOX 6" VALVE CAST IRON
H	43-0095	1.0	COVER BOX VALVE GAS 6"
I	41-3000	3.0	PIPE PVC 6" SEWER 6.275 O.D. SDR 35 FOR VALVES
J	43-0034	1.0	VALVE BOX STABILIZER
K*	45-6532	1.0	WELD-O-LET, 8" BRANCH, 8" MAIN
K*	45-6534	1.0	WELD-O-LET, 8" BRANCH, 12" MAIN
K*	45-6536	1.0	WELD-O-LET, 8" BRANCH, 18" MAIN

COATING MATERIALS LIST		
STOCK #	QTY	DESCRIPTION
47-0280	1.0	VALVE PRIMER
47-0276	2.0	VALVE FILLER
47-0272	10.0	2" WIDE WAX WRAP TAPE
47-0278	10.0	PLASTIC OUTER WRAP

	VOLUME 15 - ENGINEERING & CONSTRUCTION STANDARD	GDTI-ACFD GDTI-ACGD							
	DISTRIBUTION TAP INSTALLATIONS 8" TAP OFF 8" OR 12" STEEL								
<table border="1" style="width: 100%; border-collapse: collapse;"> <tr> <td style="width: 25%;">Drawn:</td> <td style="width: 25%;">Eng:</td> <td style="width: 25%;">Appr:</td> <td style="width: 25%;">Date:</td> </tr> <tr> <td>CM</td> <td>CLD</td> <td>XX</td> <td>5/2017</td> </tr> </table>	Drawn:	Eng:	Appr:	Date:	CM	CLD	XX	5/2017	Revision: X Page 10 of 19
Drawn:	Eng:	Appr:	Date:						
CM	CLD	XX	5/2017						

NOTES:

- 1) LENGTH OF PUP TO BE SIX INCHES.  
SADDLE PUP TO FIT STEEL MAIN.  
DO NOT SADDLE VALVE END.
- 2) COAT ALL STEEL PIPE AND VALVE WITH  
CURRENT APPROVED COATING.
- 3) INSTALL EXTENSION VALVE INDICATOR.
- 4) INSTALL VALVE BOX STABILIZER.
- 5) WELD-O-LET PART NUMBER IS  
DEPENDANT ON MAIN SIZE (SEE K\*)



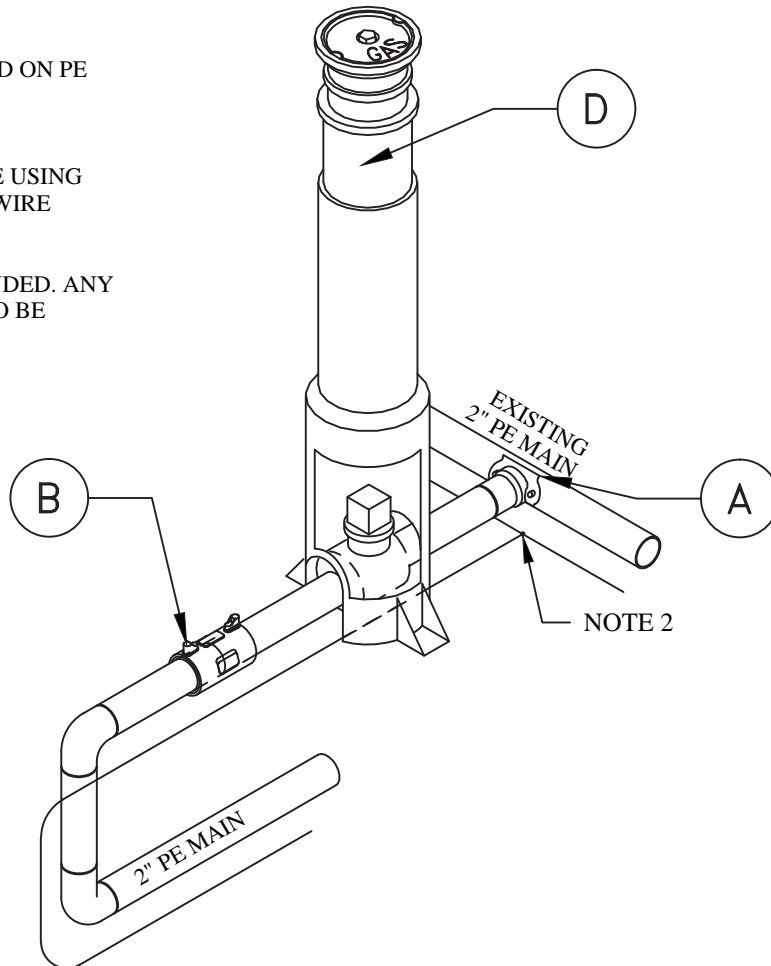
MATERIALS LIST - DTI09G			
ITEM	STOCK #	QTY	DESCRIPTION
A	43-0257	1.0	VALVE 12" WELD X FLANGE
B	43-0035	1.0	EXTENSION STEEL VALVE INDICATOR
C	45-1050	1.0	FLANGE SLIP-ON WELDING 12"
D	41-0230	1.0	PIPE 12" STEEL FBE API5L GRADE B/X42/X52
E	47-0065	1.0	GASKET FULL FACE 12"
F	47-0410	12.0	BOLT MACHINE BLK HEX HEAD W/HEX NUT 7/8" X 4"
G	43-0010	1.0	BOX 6" VALVE CAST IRON
H	43-0095	1.0	COVER BOX VALVE GAS 6"
I	41-3000	3.0	PIPE PVC 6" SEWER 6.275 O.D. SDR 35 FOR VALVES
J	43-0034	1.0	VALVE BOX STABILIZER
K*	45-6542	1.0	WELD-O-LET, 12" BRANCH, 12" MAIN
K*	45-6544	1.0	WELD-O-LET, 12" BRANCH, 18" MAIN

COATING MATERIALS LIST		
STOCK #	QTY	DESCRIPTION
47-0280	1.0	VALVE PRIMER
47-0276	2.0	VALVE FILLER
47-0272	10.0	2" WIDE WAX WRAP TAPE
47-0278	10.0	PLASTIC OUTER WRAP


	VOLUME 15 - ENGINEERING & CONSTRUCTION STANDARD	GDTI-ACGE								
	DISTRIBUTION TAP INSTALLATIONS 12" TAP OFF 12" STEEL									
<table border="1" style="width: 100%; border-collapse: collapse;"> <tr> <td style="width: 25%;">Drawn:</td> <td style="width: 25%;">Eng:</td> <td style="width: 25%;">Appr:</td> <td style="width: 25%;">Date:</td> </tr> <tr> <td>CM</td> <td>CLD</td> <td>XX</td> <td>5/2017</td> </tr> </table>	Drawn:	Eng:	Appr:	Date:	CM	CLD	XX	5/2017	Revision: X Page 11 of 19	
Drawn:	Eng:	Appr:	Date:							
CM	CLD	XX	5/2017							

NOTES:

- 1) TRACER WIRE TO BE INSTALLED ON PE PIPE PER GAS CONSTRUCTION SPECIFICATIONS.
- 2) ALL WIRE SPLICES TO BE MADE USING CURRENT APPROVED TRACER WIRE CONNECTOR.
- 3) TEN FEET OF 2" PE3408 IS INCLUDED. ANY ADDITIONAL PIPE REQUIRED TO BE CALLED FOR BY PLANNER.

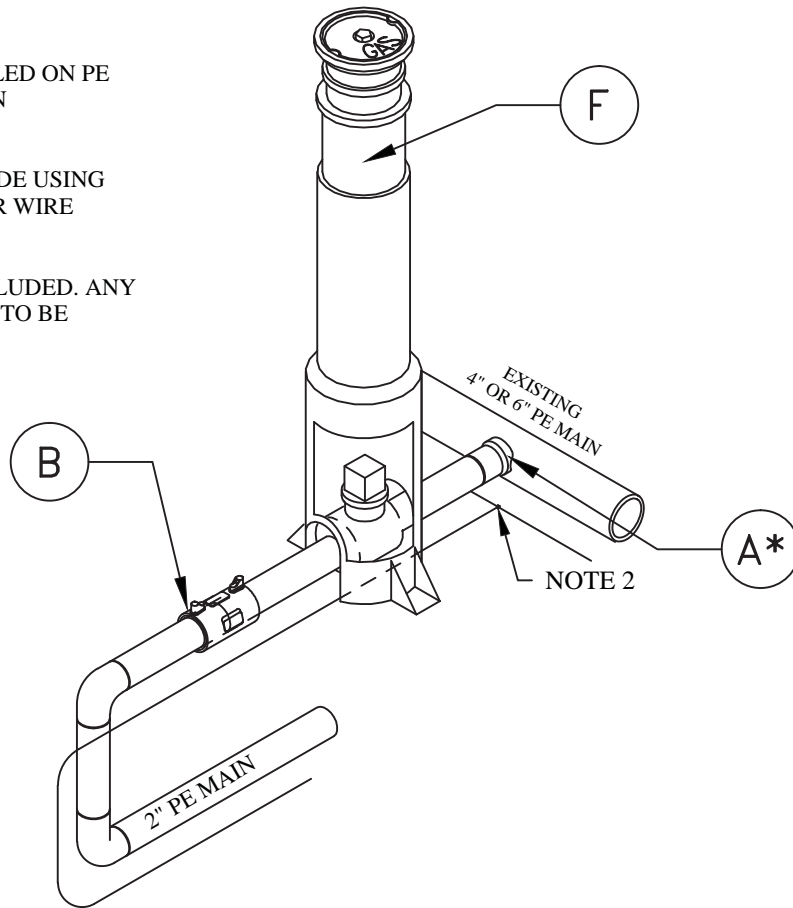


MATERIALS LIST - DT110G			
ITEM	STOCK #	QTY	DESCRIPTION
A	45-5005	1.0	SADDLE BRANCH 2" X 2" PE3408 ELECTROFUSION
B	45-0642	1.0	COUPLING ELECTROFUSION 2" IPS
C	41-5050	10.0	PIPE 2" IPS PE3408
D	45-0913	2.0	ELBOW PE3408 90 DEGREE 2" IPS BUTT FUSION
E	43-2030	1.0	VALVE 2" PE3408
F	43-0018	1.0	BOX 1-1/4" AND 2" PE VALVES TRAFFIC RATED H-20
G	45-7000	1.0	TRACER WIRE CONNECTOR
H	45-7500	10.0	WIRE, TRACER YELLOW #14

	VOLUME 15 - ENGINEERING & CONSTRUCTION STANDARD		GDTI-BAAA								
	<b>DISTRIBUTION TAP INSTALLATIONS</b> <b>2" REVERSE TAP OFF 2" PE</b>										
<table border="1"> <tr> <th>Drawn:</th> <th>Eng:</th> <th>Appr:</th> <th>Date:</th> </tr> <tr> <td>CM</td> <td>CLD</td> <td>XX</td> <td>5/2017</td> </tr> </table>	Drawn:	Eng:	Appr:	Date:	CM	CLD	XX	5/2017			Revision: X Page 12 of 19
Drawn:	Eng:	Appr:	Date:								
CM	CLD	XX	5/2017								

NOTES:

- 1) TRACER WIRE TO BE INSTALLED ON PE PIPE PER GAS CONSTRUCTION SPECIFICATIONS.
- 2) ALL WIRE SPLICES TO BE MADE USING CURRENT APPROVED TRACER WIRE CONNECTOR.
- 3) TEN FEET OF 2" PE3408 IS INCLUDED. ANY ADDITIONAL PIPE REQUIRED TO BE CALLED FOR BY PLANNER.



MATERIALS LIST - DTI11G, DTI12G			
ITEM	STOCK #	QTY	DESCRIPTION
A*	45-5010	1.0	SADDLE BRANCH 4" X 2" PE3408 BUTT FUSION
A*	45-5015	1.0	SADDLE BRANCH 6" X 2" PE3408 BUTT FUSION
B	45-0642	1.0	COUPLING ELECTROFUSION 2" IPS
C	41-5050	10.0	PIPE 2" IPS PE3408
D	45-0913	2.0	ELBOW PE3408 90 DEGREE 2" IPS BUTT FUSION
E	43-2030	1.0	VALVE 2" PE3408
F	43-0018	1.0	BOX 1-1/4" AND 2" PE VALVES TRAFFIC RATED H-20
G	45-7000	1.0	TRACER WIRE CONNECTOR
H	45-7500	10.0	WIRE, TRACER YELLOW #14

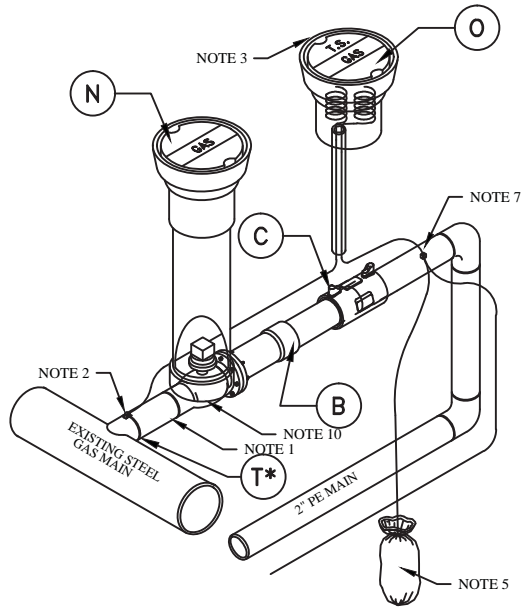
	VOLUME 15 - ENGINEERING & CONSTRUCTION STANDARD	GDTI-BABA GDTI-BACA							
	DISTRIBUTION TAP INSTALLATIONS 2" REVERSE TAP OFF 4" OR 6" PE								
<table border="1" style="width: 100%; border-collapse: collapse;"> <tr> <td style="width: 25%;">Drawn:</td> <td style="width: 25%;">Eng:</td> <td style="width: 25%;">Appr:</td> <td style="width: 25%;">Date:</td> </tr> <tr> <td>CM</td> <td>CLD</td> <td>XX</td> <td>5/2017</td> </tr> </table>	Drawn:	Eng:	Appr:	Date:	CM	CLD	XX	5/2017	Revision: X Page 13 of 19
Drawn:	Eng:	Appr:	Date:						
CM	CLD	XX	5/2017						

**SECTION 5: GAS CONSTRUCTION DRAWINGS**

**GDTI-BBDA/BBEA/  
BBFA/BBGA**


NOTES:

- 1) LENGTH OF PUP TO BE THREE INCHES. SADDLE PUP TO FIT STEEL MAIN. DO NOT SADDLE VALVE END.
- 2) ALL WIRE CONNECTIONS TO STEEL PIPE TO BE CADWELDED AND COATED WITH CURRENT APPROVED COATING.
- 3) TEST LEAD WIRE TO BE LONG ENOUGH TO EXTEND ONE FOOT ABOVE GROUND LEVEL AND SHALL TERMINATE IN VALVE BOX.
- 4) USE 3/4" PVC OR PE AS A LEAD WIRE CONDUCTOR PIPE PLACED APPROXIMATELY 6" ABOVE CARRIER PIPE AND INTO TEST STATION BOX.
- 5) ANODE CAN BE INSTALLED VERTICALLY OR HORIZONTALLY BUT MUST HAVE A MINIMAL RADIAL CLEARANCE OF TWO FEET FROM THE STEEL PIPE AND BE POSITIONED AT AN ELEVATION NO HIGHER THAN THE STEEL PIPE.
- 6) TRACER WIRE TO BE INSTALLED ON STEEL PIPE AND ON PE PIPE PER GAS CONSTRUCTION SPECIFICATIONS.
- 7) ALL WIRE SPLICES TO BE MADE USING CURRENT APPROVED TRACER WIRE CONNECTOR.
- 8) COAT ALL STEEL PIPE AND VALVE WITH CURRENT APPROVED COATING.
- 9) 10 FEET OF 2" PE PIPE IS INCLUDED. ANY ADDITIONAL PIPE REQUIRED TO BE CALLED FOR BY PLANNER.
- 10) INSTALL VALVE BOX STABILIZER.
- 11) WELD-O-LET PART NUMBER IS DEPENDANT ON MAIN SIZE (SEE T\*)



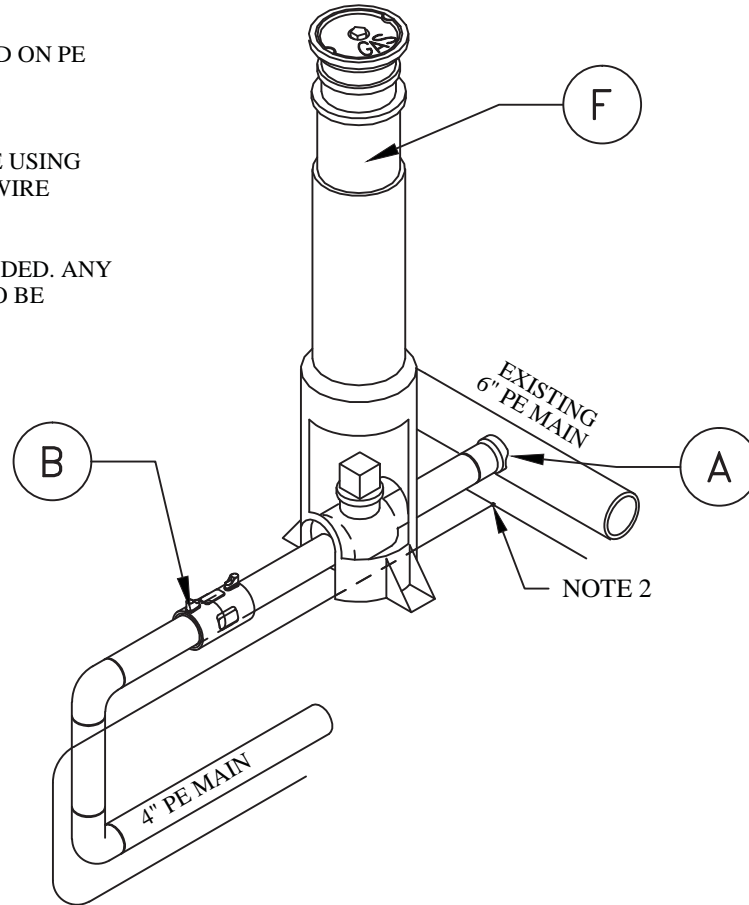
MATERIALS LIST - DTI14G			
ITEM	STOCK #	QTY	DESCRIPTION
A	43-0227	1.0	VALVE 2" WELD X FLANGE
B	45-6030	1.0	TRANSITION FITTING FLANGED 2" IPS PE3408
C	45-0642	1.0	COUPLING ELECTROFUSION 2" IPS
D	41-0200	1.0	PIPE 2" STEEL FBE API5L GRADE B
E	41-5050	10.0	PIPE 2" IPS PE3408
F	45-0913	2.0	ELBOW PE3408 90 DEGREE 2" IPS BUTT FUSION
G	47-0040	1.0	GASKET COMPRESSED FIBER 2"
H	47-0340	4.0	BOLT MACHINE BLK HEX HEAD W/HEX NUT 5/8" X 2-1/2"
I	47-0020	1.0	ANODE MAGNESIUM 3 LB. WITH COVERING
J	45-7600	10.0	WIRE, TRACER BLACK #14
K	45-7500	10.0	WIRE, TRACER YELLOW #14
L	45-7000	1.0	TRACER WIRE CONNECTOR
M	43-0010	2.0	BOX 6" VALVE CAST IRON
N	43-0095	1.0	COVER BOX VALVE GAS 6"
O	43-0090	1.0	TS BOX COVER
P	41-3000	3.0	PIPE PVC 6" SEWER 6.275 O.D. SDR 35 FOR VALVES
Q	43-0034	1.0	VALVE BOX STABILIZER
R	47-0038	1.0	CADWELD CHARGE
S	47-0037	1.0	CADWELD SLEEVE
T*	45-6502	1.0	WELD-O-LET, 2" BRANCH, 2' MAIN
T*	45-6504	1.0	WELD-O-LET, 2" BRANCH, 4-6' MAIN
T*	45-6506	1.0	WELD-O-LET, 2" BRANCH, 8-18' MAIN

COATING MATERIALS LIST		
STOCK #	QTY	DESCRIPTION
47-0280	0.5	VALVE PRIMER
47-0276	1.0	VALVE FILLER
47-0272	5.0	2" WIDE WAX WRAP TAPE
47-0278	5.0	PLASTIC OUTER WRAP
47-0600	1.0	CADWELD "HANDY CAP"


	<b>VOLUME 15 - ENGINEERING &amp; CONSTRUCTION STANDARD</b>	<b>GDTI-BBDA GDTI-BBEA GDTI-BBFA GDTI-BBGA</b>								
	<b>DISTRIBUTION TAP INSTALLATIONS</b> <b>2" REVERSE TAP OFF 2", 4", 8", OR 12" STEEL</b>									
<table border="1" style="width: 100%; border-collapse: collapse;"> <tr> <td style="width: 25%;">Drawn:</td> <td style="width: 25%;">Eng:</td> <td style="width: 25%;">Appr:</td> <td style="width: 25%;">Date:</td> </tr> <tr> <td>CM</td> <td>CLD</td> <td>XX</td> <td>5/2017</td> </tr> </table>	Drawn:	Eng:	Appr:	Date:	CM	CLD	XX	5/2017	Revision: X Page 14 of 19	
Drawn:	Eng:	Appr:	Date:							
CM	CLD	XX	5/2017							

NOTES:

- 1) TRACER WIRE TO BE INSTALLED ON PE PIPE PER GAS CONSTRUCTION SPECIFICATIONS.
- 2) ALL WIRE SPLICES TO BE MADE USING CURRENT APPROVED TRACER WIRE CONNECTOR.
- 3) TEN FEET OF 4" PE3408 IS INCLUDED. ANY ADDITIONAL PIPE REQUIRED TO BE CALLED FOR BY PLANNER.

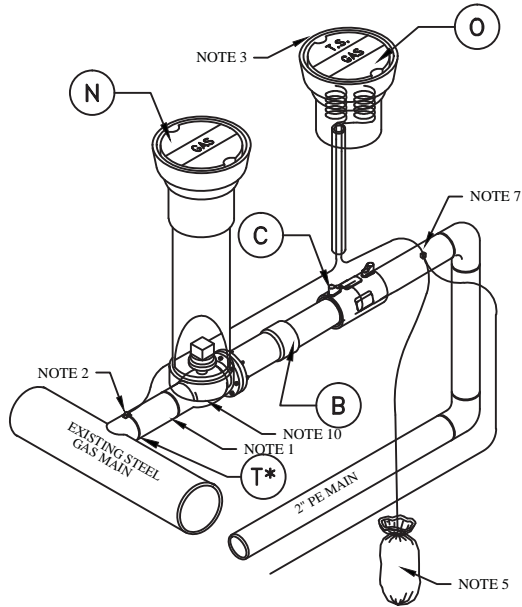


MATERIALS LIST - DTI13G			
ITEM	STOCK #	QTY	DESCRIPTION
A	45-5016	1.0	SADDLE BRANCH 6" X 4" PE3408 BUTT FUSION
B	45-0644	1.0	COUPLING ELECTROFUSION 4" IPS
C	41-5060	10.0	PIPE PLASTIC 4" IPS PE3408 STRAIGHT JOINTS
D	45-0925	2.0	ELBOW PE3408 90 DEGREE 4" IPS BUTT FUSION
E	43-2040	1.0	VALVE 4" PE3408
F	43-0020	1.0	BOX 3 & 4 " PE VALVES TRAFFIC RATED H-20
G	45-7000	1.0	TRACER WIRE CONNECTOR
H	45-7500	10.0	WIRE, TRACER YELLOW #14

	VOLUME 15 - ENGINEERING & CONSTRUCTION STANDARD	GDTI-BACB								
	<b>DISTRIBUTION TAP INSTALLATIONS 4" REVERSE TAP OFF 6" PE</b>									
<table border="1" style="width: 100%; border-collapse: collapse;"> <tr> <td style="width: 25%;">Drawn:</td> <td style="width: 25%;">Eng:</td> <td style="width: 25%;">Appr:</td> <td style="width: 25%;">Date:</td> </tr> <tr> <td>CM</td> <td>CLD</td> <td>XX</td> <td>5/2017</td> </tr> </table>	Drawn:	Eng:	Appr:	Date:	CM	CLD	XX	5/2017	Revision: X Page 15 of 19	
Drawn:	Eng:	Appr:	Date:							
CM	CLD	XX	5/2017							


NOTES:

- 1) LENGTH OF PUP TO BE THREE INCHES. SADDLE PUP TO FIT STEEL MAIN. DO NOT SADDLE VALVE END.
- 2) ALL WIRE CONNECTIONS TO STEEL PIPE TO BE CADWELDED AND COATED WITH CURRENT APPROVED COATING.
- 3) TEST LEAD WIRE TO BE LONG ENOUGH TO EXTEND ONE FOOT ABOVE GROUND LEVEL AND SHALL TERMINATE IN VALVE BOX.
- 4) USE 3/4" PVC OR PE AS A LEAD WIRE CONDUCTOR PIPE PLACED APPROXIMATELY 6" ABOVE CARRIER PIPE AND INTO TEST STATION BOX.
- 5) ANODE CAN BE INSTALLED VERTICALLY OR HORIZONTALLY BUT MUST HAVE A MINIMAL RADIAL CLEARANCE OF TWO FEET FROM THE STEEL PIPE AND BE POSITIONED AT AN ELEVATION NO HIGHER THAN THE STEEL PIPE.
- 6) TRACER WIRE TO BE INSTALLED ON STEEL PIPE AND ON PE PIPE PER GAS CONSTRUCTION SPECIFICATIONS.
- 7) ALL WIRE SPLICES TO BE MADE USING CURRENT APPROVED TRACER WIRE CONNECTOR.
- 8) COAT ALL STEEL PIPE AND VALVE WITH CURRENT APPROVED COATING.
- 9) 10 FEET OF 2" PE PIPE IS INCLUDED. ANY ADDITIONAL PIPE REQUIRED TO BE CALLED FOR BY PLANNER.
- 10) INSTALL VALVE BOX STABILIZER.
- 11) WELD-O-LET PART NUMBER IS DEPENDANT ON MAIN SIZE (SEE T\*)



MATERIALS LIST - DTI15G			
ITEM	STOCK #	QTY	DESCRIPTION
A	43-0237	1.0	VALVE 4" WELD X FLANGE
B	45-6040	1.0	TRANSITION FITTING FLANGED 4" IPS PE3408
C	45-0644	1.0	COUPLING ELECTROFUSION 4" IPS
D	41-0210	1.0	PIPE 4" STEEL FBE AP15L GRADE B
E	41-5060	10.0	PIPE 4" IPS PE3408
F	45-0925	2.0	ELBOW PE3408 90 DEGREE 4" IPS BUTT FUSION
G	47-0050	1.0	GASKET COMPRESSED FIBER 4"
H	47-0360	8.0	BOLT MACHINE BLK HEX HEAD W/HEX NUT 5/8" X 3"
I	47-0020	1.0	ANODE MAGNESIUM 3 LB. WITH COVERING
J	45-7600	10.0	WIRE, TRACER BLACK #14
K	45-7500	10.0	WIRE, TRACER YELLOW #14
L	45-7000	1.0	TRACER WIRE CONNECTOR
M	43-0010	2.0	BOX 6" VALVE CAST IRON
N	43-0095	1.0	COVER BOX VALVE GAS 6"
O	43-0090	1.0	TS BOX COVER
P	41-3000	3.0	PIPE PVC 6" SEWER 6.275 O.D. SDR 35 FOR VALVES
Q	43-0034	1.0	VALVE BOX STABILIZER
R	47-0038	1.0	CADWELD CHARGE
S	47-0037	1.0	CADWELD SLEEVE
T*	45-6512	1.0	WELD-O-LET, 4" BRANCH, 4" MAIN
T*	45-6514	1.0	WELD-O-LET, 4" BRANCH, 8" MAIN
T*	45-6516	1.0	WELD-O-LET, 4" BRANCH, 12-18" MAIN

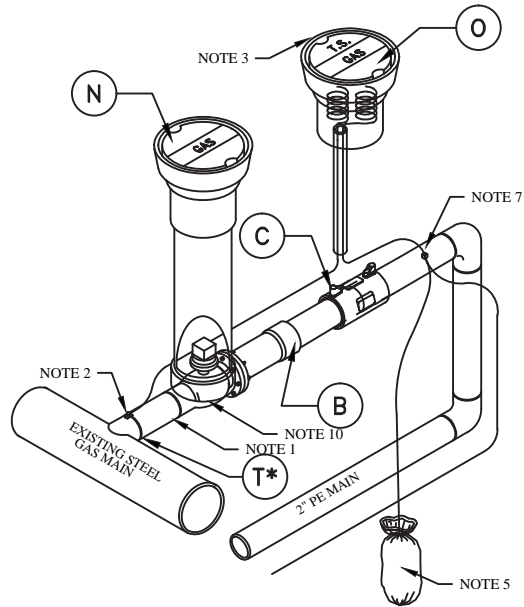
COATING MATERIALS LIST		
STOCK #	QTY	DESCRIPTION
47-0280	1.0	VALVE PRIMER
47-0276	2.0	VALVE FILLER
47-0272	10.0	2" WIDE WAX WRAP TAPE
47-0278	10.0	PLASTIC OUTER WRAP
47-0600	1.0	CADWELD "HANDY CAP"

	VOLUME 15 - ENGINEERING & CONSTRUCTION STANDARD	<b>GDTI-BBEB</b> <b>GDTI-BBGB</b> <b>GDTI-BBFB</b>								
	<b>DISTRIBUTION TAP INSTALLATIONS</b> <b>4" REVERSE TAP OFF 4", 8", OR 12" STEEL</b>									
<table border="1"> <tr> <th>Drawn:</th> <th>Eng:</th> <th>Appr:</th> <th>Date:</th> </tr> <tr> <td>CM</td> <td>CLD</td> <td>XX</td> <td>5/2017</td> </tr> </table>	Drawn:	Eng:	Appr:	Date:	CM	CLD	XX	5/2017		Revision: X Page 16 of 19
Drawn:	Eng:	Appr:	Date:							
CM	CLD	XX	5/2017							




NOTES:

- 1) LENGTH OF PUP TO BE THREE INCHES. SADDLE PUP TO FIT STEEL MAIN. DO NOT SADDLE VALVE END.
- 2) ALL WIRE CONNECTIONS TO STEEL PIPE TO BE CADWELDED AND COATED WITH CURRENT APPROVED COATING.
- 3) TEST LEAD WIRE TO BE LONG ENOUGH TO EXTEND ONE FOOT ABOVE GROUND LEVEL AND SHALL TERMINATE IN VALVE BOX.
- 4) USE 3/4" PVC OR PE AS A LEAD WIRE CONDUCTOR PIPE PLACED APPROXIMATELY 6" ABOVE CARRIER PIPE AND INTO TEST STATION BOX.
- 5) ANODE CAN BE INSTALLED VERTICALLY OR HORIZONTALLY BUT MUST HAVE A MINIMAL RADIAL CLEARANCE OF TWO FEET FROM THE STEEL PIPE AND BE POSITIONED AT AN ELEVATION NO HIGHER THAN THE STEEL PIPE.
- 6) TRACER WIRE TO BE INSTALLED ON STEEL PIPE AND ON PE PIPE PER GAS CONSTRUCTION SPECIFICATIONS.
- 7) ALL WIRE SPLICES TO BE MADE USING CURRENT APPROVED TRACER WIRE CONNECTOR.
- 8) COAT ALL STEEL PIPE AND VALVE WITH CURRENT APPROVED COATING.
- 9) 10 FEET OF 2" PE PIPE IS INCLUDED. ANY ADDITIONAL PIPE REQUIRED TO BE CALLED FOR BY PLANNER.
- 10) INSTALL VALVE BOX STABILIZER.
- 11) WELD-O-LET PART NUMBER IS DEPENDANT ON MAIN SIZE (SEE T\*)



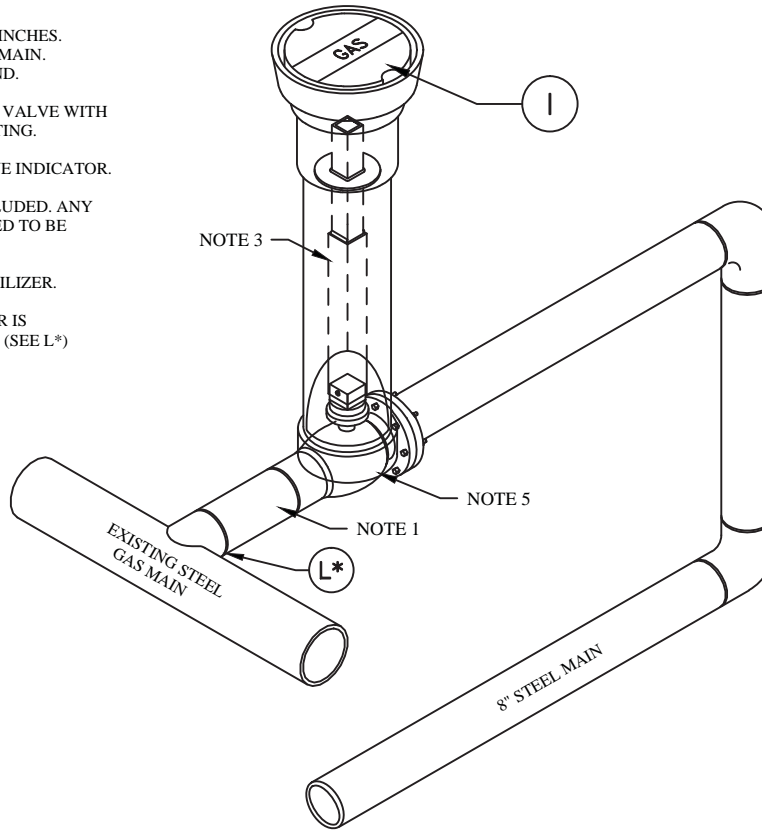
MATERIALS LIST - DTI16G			
ITEM	STOCK #	QTY	DESCRIPTION
A	43-0239	1.0	VALVE 6" WELD X FLANGE
B	45-6050	1.0	TRANSITION FITTING FLANGED 6" IPS PE3408
C	45-0646	1.0	COUPLING ELECTROFUSION 6" IPS
D	41-0215	1.0	PIPE 6" FBE API5L GRADE B
E	41-5170	10.0	PIPE 6" IPS PE3408
F	45-0927	2.0	ELBOW PE3408 90 DEGREE 6" IPS BUTT FUSION
G	47-0055	1.0	GASKET COMPRESSED FIBER 6"
H	47-0390	8.0	BOLT MACHINE BLK HEX HEAD W/HEX NUT 3/4" X 3-1/4"
I	47-0020	1.0	ANODE MAGNESIUM 3 LB. WITH COVERING
J	45-7600	10.0	WIRE, TRACER BLACK #14
K	45-7500	10.0	WIRE, TRACER YELLOW #14
L	45-7000	1.0	TRACER WIRE CONNECTOR
M	43-0010	2.0	BOX 6" VALVE CAST IRON
N	43-0095	1.0	COVER BOX VALVE GAS 6"
O	43-0090	1.0	TS BOX COVER
P	41-3000	3.0	PIPE PVC 6" SEWER 6.275 O.D. SDR 35 FOR VALVES
Q	43-0034	1.0	VALVE BOX STABILIZER
R	47-0038	1.0	CADWELD CHARGE
S	47-0037	1.0	CADWELD SLEEVE
T*	45-6522	1.0	WELD-O-LET, 6" BRANCH, 8" MAIN
T*	45-6524	1.0	WELD-O-LET, 6" BRANCH, 12" MAIN
T*	45-6526	1.0	WELD-O-LET, 6" BRANCH, 12-18" MAIN

COATING MATERIALS LIST		
STOCK #	QTY	DESCRIPTION
47-0280	1.0	VALVE PRIMER
47-0276	2.0	VALVE FILLER
47-0272	10.0	2" WIDE WAX WRAP TAPE
47-0278	10.0	PLASTIC OUTER WRAP
47-0600	1.0	CADWELD "HANDY CAP"

	<b>VOLUME 15 - ENGINEERING &amp; CONSTRUCTION STANDARD</b>	<b>GDTI-BBFC GDTI-BBGC</b>							
	<b>DISTRIBUTION TAP INSTALLATIONS 6" REVERSE TAP OFF 8" OR 12" STEEL</b>								
<table border="1" style="width: 100%; border-collapse: collapse;"> <tr> <td style="width: 25%;">Drawn:</td> <td style="width: 25%;">Eng:</td> <td style="width: 25%;">Appr:</td> <td style="width: 25%;">Date:</td> </tr> <tr> <td>CM</td> <td>CLD</td> <td>XX</td> <td>5/2017</td> </tr> </table>	Drawn:	Eng:	Appr:	Date:	CM	CLD	XX	5/2017	Revision: X Page 17 of 19
Drawn:	Eng:	Appr:	Date:						
CM	CLD	XX	5/2017						

NOTES:

- 1) LENGTH OF PUP TO BE SIX INCHES. SADDLE PUP TO FIT STEEL MAIN. DO NOT SADDLE VALVE END.
- 2) COAT ALL STEEL PIPE AND VALVE WITH CURRENT APPROVED COATING.
- 3) INSTALL EXTENSION VALVE INDICATOR.
- 4) TEN FEET OF 8" FBE IS INCLUDED. ANY ADDITIONAL PIPE REQUIRED TO BE CALLED FOR BY PLANNER.
- 5) INSTALL VALVE BOX STABILIZER.
- 6) WELD-O-LET PART NUMBER IS DEPENDANT ON MAIN SIZE (SEE L\*)



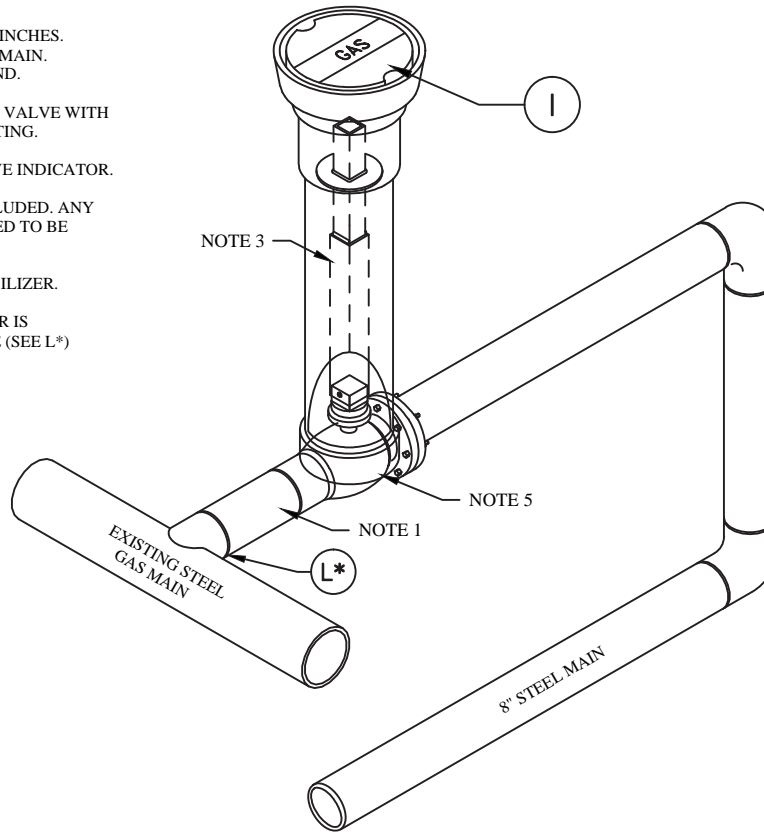
MATERIALS LIST - DTI17G			
ITEM	STOCK #	QTY	DESCRIPTION
A	43-0247	1.0	VALVE 8" WELD X FLANGE
B	43-0035	1.0	EXTENSION STEEL VALVE INDICATOR
C	45-1030	1.0	FLANGE SLIP-ON WELDING 8"
D	41-0220	11.0	PIPE 8" STEEL FBE API5L GRADE B/X42/X52
E	45-0933	2.0	ELBOW WELDING 90 DEGREE 8" STD RADIUS
F	47-0060	1.0	GASKET COMPRESSED FIBER 8"
G	47-0400	8.0	BOLT MACHINE BLK HEX HEAD W/HEX NUT 3/4" X 3-1/2"
H	43-0010	1.0	BOX 6" VALVE CAST IRON
I	43-0095	1.0	COVER BOX VALVE GAS 6"
J	41-3000	3.0	PIPE PVC 6" SEWER 6.275 O.D. SDR 35 FOR VALVES
K	43-0034	1.0	VALVE BOX STABILIZER
L*	45-6532	1.0	WELD-O-LET, 8" BRANCH, 8" MAIN
L*	45-6534	1.0	WELD-O-LET, 8" BRANCH, 12" MAIN
L*	45-6536	1.0	WELD-O-LET, 8" BRANCH, 18" MAIN

COATING MATERIALS LIST		
STOCK #	QTY	DESCRIPTION
47-0280	1.0	VALVE PRIMER
47-0276	2.0	VALVE FILLER
47-0272	10.0	2" WIDE WAX WRAP TAPE
47-0278	10.0	PLASTIC OUTER WRAP

	<b>VOLUME 15 - ENGINEERING &amp; CONSTRUCTION STANDARD</b>	<b>GDTI-BCFD GDTI-BCGD</b>								
	<b>DISTRIBUTION TAP INSTALLATIONS 8" REVERSE TAP OFF 8" OR 12" STEEL</b>									
<table border="1" style="width: 100%; border-collapse: collapse;"> <tr> <td style="width: 25%;">Drawn:</td> <td style="width: 25%;">Eng:</td> <td style="width: 25%;">Appr:</td> <td style="width: 25%;">Date:</td> </tr> <tr> <td>CM</td> <td>CLD</td> <td>XX</td> <td>5/2017</td> </tr> </table>	Drawn:	Eng:	Appr:	Date:	CM	CLD	XX	5/2017	Revision: X Page 18 of 19	
Drawn:	Eng:	Appr:	Date:							
CM	CLD	XX	5/2017							


NOTES:

- 1) LENGTH OF PUP TO BE SIX INCHES. SADDLE PUP TO FIT STEEL MAIN. DO NOT SADDLE VALVE END.
- 2) COAT ALL STEEL PIPE AND VALVE WITH CURRENT APPROVED COATING.
- 3) INSTALL EXTENSION VALVE INDICATOR.
- 4) TEN FEET OF 8" FBE IS INCLUDED. ANY ADDITIONAL PIPE REQUIRED TO BE CALLED FOR BY PLANNER.
- 5) INSTALL VALVE BOX STABILIZER.
- 6) WELD-O-LET PART NUMBER IS DEPENDANT ON MAIN SIZE (SEE L\*)



MATERIALS LIST - DT118G			
ITEM	STOCK #	QTY	DESCRIPTION
A	43-0257	1.0	VALVE 12" WELD X FLANGE
B	43-0035	1.0	EXTENSION STEEL VALVE INDICATOR
C	45-1050	1.0	FLANGE SLIP-ON WELDING 12"
D	41-0230	11.0	PIPE 12" STEEL FBE API5L GRADE B/X42/X52
E	45-0939	2.0	ELBOW WELDING 90 DEGREE 12" STD RADIUS
F	47-0065	1.0	GASKET COMPRESSED FIBER 12"
G	47-0410	12.0	BOLT MACHINE BLK HEX HEAD W/HEX NUT 7/8" X 4"
H	43-0010	1.0	BOX 6" VALVE CAST IRON
I	43-0095	1.0	COVER BOX VALVE GAS 6"
J	41-3000	3.0	PIPE PVC 6" SEWER 6.275 O.D. SDR 35 FOR VALVES
K	43-0034	1.0	VALVE BOX STABILIZER
L*	45-6542	1.0	WELD-O-LET, 12" BRANCH, 12" MAIN
L*	45-6544	1.0	WELD-O-LET, 12" BRANCH, 18" MAIN

COATING MATERIALS LIST		
STOCK #	QTY	DESCRIPTION
47-0280	1.0	VALVE PRIMER
47-0276	2.0	VALVE FILLER
47-0272	10.0	2" WIDE WAX WRAP TAPE
47-0278	10.0	PLASTIC OUTER WRAP

	<b>VOLUME 15 - ENGINEERING &amp; CONSTRUCTION STANDARD</b>	<b>GDTI-BCGE</b>							
	<b>DISTRIBUTION TAP INSTALLATIONS 12" REVERSE TAP OFF 12" STEEL</b>								
<table border="1" style="width: 100%; border-collapse: collapse;"> <tr> <td style="width: 25%;">Drawn:</td> <td style="width: 25%;">Eng:</td> <td style="width: 25%;">Appr:</td> <td style="width: 25%;">Date:</td> </tr> <tr> <td>CM</td> <td>CLD</td> <td>XX</td> <td>5/2017</td> </tr> </table>	Drawn:	Eng:	Appr:	Date:	CM	CLD	XX	5/2017	Revision: X Page 19 of 19
Drawn:	Eng:	Appr:	Date:						
CM	CLD	XX	5/2017						