

**ENGINEERING & CONSTRUCTION STANDARD**  
**SECTION 5 GAS CONSTRUCTION DRAWINGS**  
**GAS METER INSTALLATIONS**  
**METER SET**  
**1400 CFH**

SHEET 32 OF 55

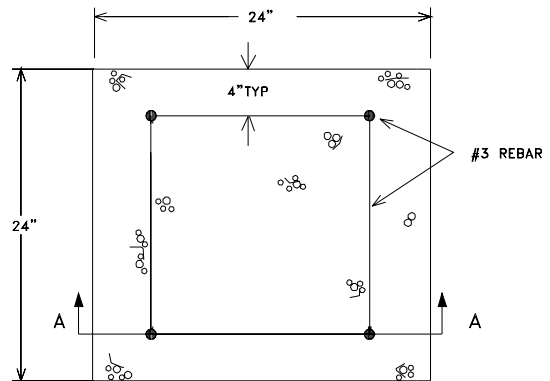
**DRAWING NUMBER**  
**GMI27G**

DRAWN	DESIGN	SUPR	DATE	REV
GD	KS	DS	5/98	7/06

MATERIAL LIST

STOCK #	QTY.	DESCRIPTION
45-1340	1.0	NIPPLE PIPE 1-1/4" X 3" BLACK
45-1830	1.0	REDUCER 2" X 1-1/4" BLACK
45-1570	1.0	NIPPLE PIPE 2" X 5" BLACK
45-0760	3.0	ELBOW BLACK 90 DEGREE 2"
45-1550	3.0	NIPPLE PIPE 2" X 4" BLACK
45-4020	2.0	UNION INSULATED BLACK 2"
45-1590	3.0	NIPPLE PIPE 2" X 6" BLACK
45-1600	2.0	NIPPLE PIPE 2" X 12" BLACK
43-0080	1.0	COCK GAS METER 2"
45-2190	1.0	TEE REDUCING 2" X 2" X 1" BLACK
45-1240	1.0	NIPPLE PIPE 1" X 3" BLACK
43-0050	1.0	COCK GAS METER 1"
45-1720	1.0	PLUG PIPE 1" BLACK

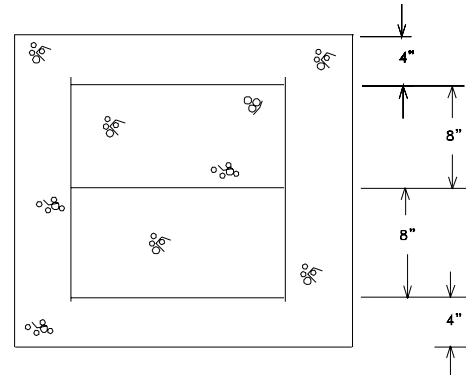
CONCRETE  
BASE DETAIL



PLAN VIEW

NOTES:

- A) THIS COMPATIBLE UNIT REQUIRES A 1 1/4" RISER.
- B) DASHED LINE REPRESENTS SPACE REQUIREMENTS FOR THIS METER SET.
- C) REGULATOR AND ORIFICE TO BE SIZED AND DISTRIBUTED BY THE GAS METER SHOP.
- D) USE RECORDER FOR P-2 CUSTOMER (LOAD GREATER THAN 50 MCF ON A PEAK DAY). NOTIFY SUPERVISOR GAS METER SHOP WHEN REQUIRED.
- E) 1400 CFH METERS ARE STOCK ITEMS WHICH MUST BE SPECIAL ORDERED THROUGH THE GAS METER SHOP.
- F) CUSTOMER SHALL STUB OUT 4" FROM FINISH FACE OF BUILDING WITH 2" STEEL PIPE AND INSTALL A 2" 90 DEGREE ELBOW HAND TIGHT.
- G) DIMENSIONS ABOVE ARE MINIMUM REQUIREMENTS FOR METER ACCESSIBILITY. ADDITIONAL GAS METER LOCATION REQUIREMENTS IN SECTION 6 OF THIS VOLUME MUST ALSO BE ADHERED TO.



SECTION A-A



ENGINEERING & CONSTRUCTION STANDARD

SECTION 5 GAS CONSTRUCTION DRAWINGS  
GAS METER INSTALLATIONS  
METER SET  
1400 CFH

SHEET 33 OF 55

DRAWING NUMBER

**GMI27G**

DRAWN	DESIGN	SUPR	DATE	REV
GD	KS	DS	5/98	7/06