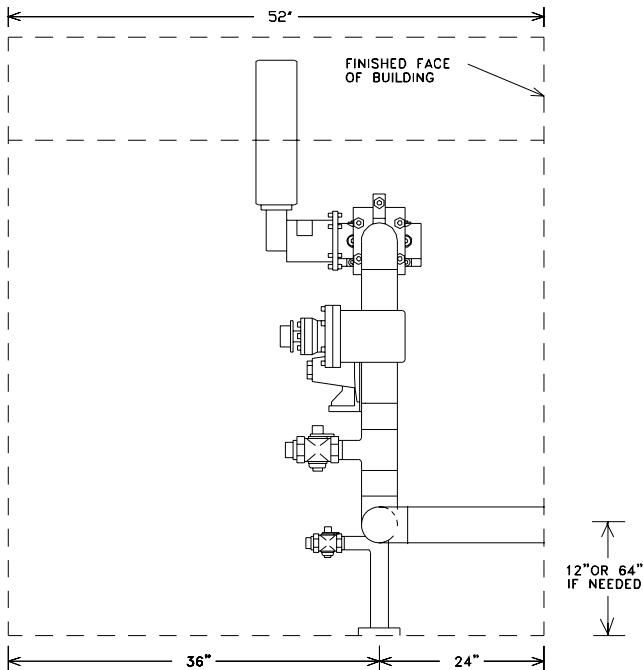


ENGINEERING & CONSTRUCTION STANDARD  
SECTION 5 GAS CONSTRUCTION DRAWINGS  
GAS METER INSTALLATIONS  
METER SET  
5 M

SHEET 38 OF 55

DRAWING NUMBER  
**GMI33G**

DRAWN	DESIGN	SUPR	DATE	REV
GD	KS	DS	5/98	7/06



**NOTES:**

- A) THIS COMPATIBLE UNIT REQUIRES A 2" RISER.
- B) DASHED LINE REPRESENTS SPACE REQUIREMENTS FOR THIS METER SET.
- C) REGULATOR AND ORIFICE TO BE SIZED AND DISTRIBUTED BY THE GAS METER SHOP.
- D) USE RECORDER FOR P-2 CUSTOMER (LOAD GREATER THAN 50 MCF ON A PEAK DAY). NOTIFY SUPERVISOR GAS METER SHOP WHEN REQUIRED.
- E) "L" BRACKETS WITH BOLTS WILL BE FABRICATED BY SPPCO. MACHINE SHOP.
- F) 5M METERS ARE ITEMS WHICH MUST BE SPECIAL ORDERED THROUGH THE GAS METER SHOP.
- G) CUSTOMER SHALL STUB OUT 24" FROM FINISH FACE OF BUILDING WITH 4" STEEL PIPE.
- H) DIMENSIONS ABOVE ARE MINIMUM REQUIREMENTS FOR METER ACCESSIBILITY. ADDITIONAL GAS METER LOCATION REQUIREMENTS IN SECTION 6 OF THIS VOLUME MUST ALSO BE ADHERED TO.

**MATERIAL LIST**

STOCK #	QTY.	DESCRIPTION
45-1590	1.0	NIPPLE PIPE 2" X 6" BLACK
45-1550	1.0	NIPPLE PIPE 2" X 4" BLACK
45-1880	1.0	REDUCER WELDING 4" X 2"
45-0930	3.0	ELBOW WELDING 90 DEGREE 4" STD RADIUS
51-0090	2.0	PIPE 4" STANDARD STEEL (4.5" O.D.)
45-1010	2.0	FLANGE SLIP-ON WELDING 4"
47-0080	1.0	INSULATION FLANGE KIT 4"
47-0050	1.0	GASKET FULL FACE 4" X 9"
47-0360	24.0	BOLT MACHINE BLK HEX HEAD W/HEX NUT 5/8" X 3"
57-1910	2.0	REDUCER 4" X 3" WELDING
45-1000	2.0	FLANGE SLIP-ON WELD 3"
45-0570	1.0	COUPLING COMPRESSION 4-1/2" OD COATED
43-0130	1.0	VALVE 4" WELD ENDS
45-2237	1.0	TEE REDUCING 4" X 4" X 2" WELDING
45-1530	1.0	NIPPLE PIPE 2" X 3" BLACK
43-0080	1.0	2" GAS METER COCK
45-1740	1.0	PLUG PIPE 2" BLACK



**ENGINEERING & CONSTRUCTION STANDARD**

**SECTION 5 GAS CONSTRUCTION DRAWINGS**

**GAS METER INSTALLATIONS**

**METER SET**

**5 M**

SHEET 39 OF 55

**DRAWING NUMBER**

**GMI33G**

DRAWN	DESIGN	SUPR	DATE	REV
GD	KS	DS	5/98	7/06