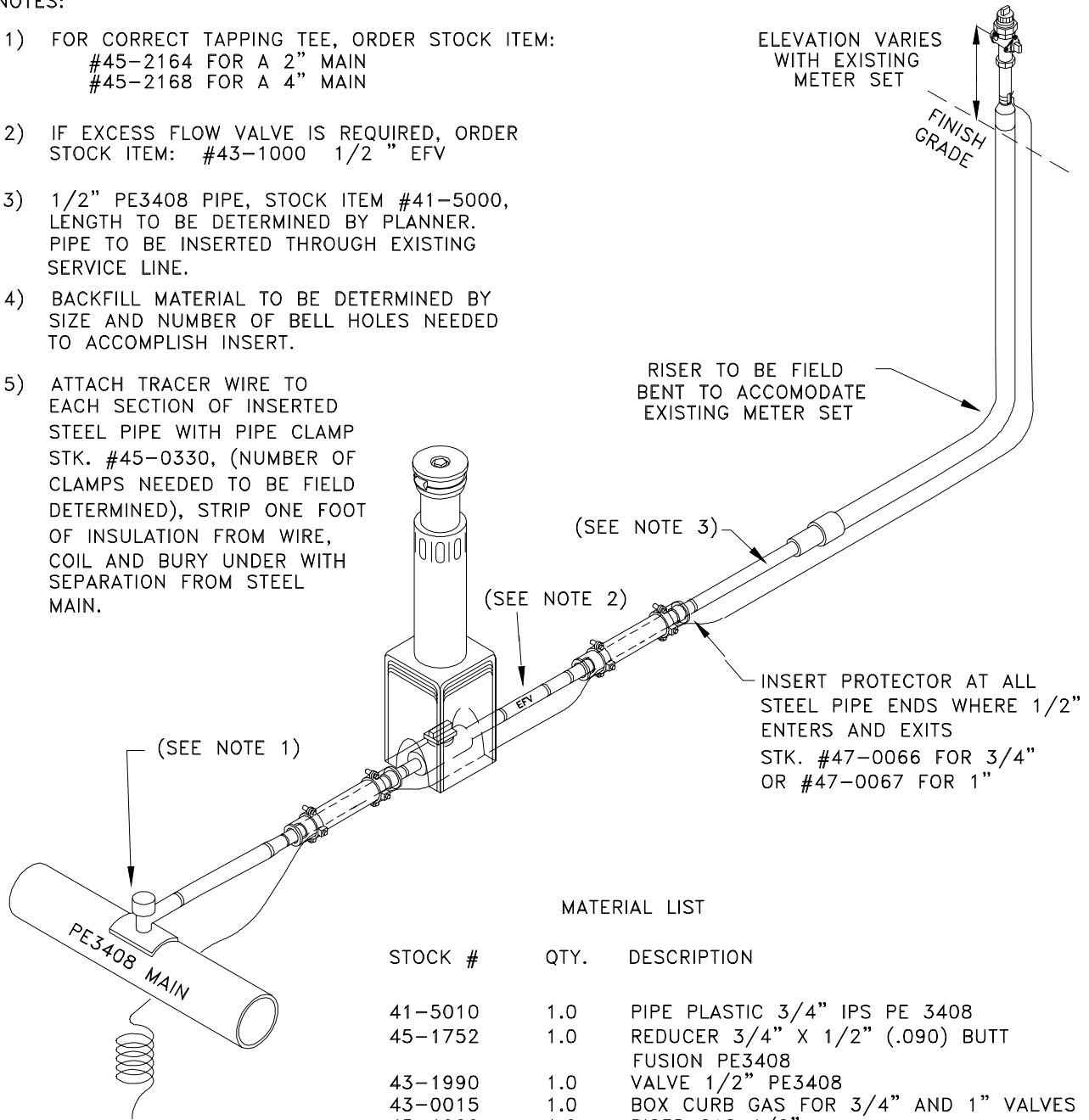


NOTES:

- 1) FOR CORRECT TAPPING TEE, ORDER STOCK ITEM:
 #45-2164 FOR A 2" MAIN
 #45-2168 FOR A 4" MAIN
- 2) IF EXCESS FLOW VALVE IS REQUIRED, ORDER STOCK ITEM: #43-1000 1/2" EFV
- 3) 1/2" PE3408 PIPE, STOCK ITEM #41-5000, LENGTH TO BE DETERMINED BY PLANNER. PIPE TO BE INSERTED THROUGH EXISTING SERVICE LINE.
- 4) BACKFILL MATERIAL TO BE DETERMINED BY SIZE AND NUMBER OF BELL HOLES NEEDED TO ACCOMPLISH INSERT.
- 5) ATTACH TRACER WIRE TO EACH SECTION OF INSERTED STEEL PIPE WITH PIPE CLAMP STK. #45-0330, (NUMBER OF CLAMPS NEEDED TO BE FIELD DETERMINED), STRIP ONE FOOT OF INSULATION FROM WIRE, COIL AND BURY UNDER WITH SEPARATION FROM STEEL MAIN.



MATERIAL LIST

STOCK #	QTY.	DESCRIPTION
41-5010	1.0	PIPE PLASTIC 3/4" IPS PE 3408
45-1752	1.0	REDUCER 3/4" X 1/2" (.090) BUTT FUSION PE3408
43-1990	1.0	VALVE 1/2" PE3408
43-0015	1.0	BOX CURB GAS FOR 3/4" AND 1" VALVES
45-1900	1.0	RISER GAS 1/2"
43-0110	1.0	COCK GAS METER 3/4" (INSULATED)
45-1710	1.0	PLUG PIPE 3/4" BLACK