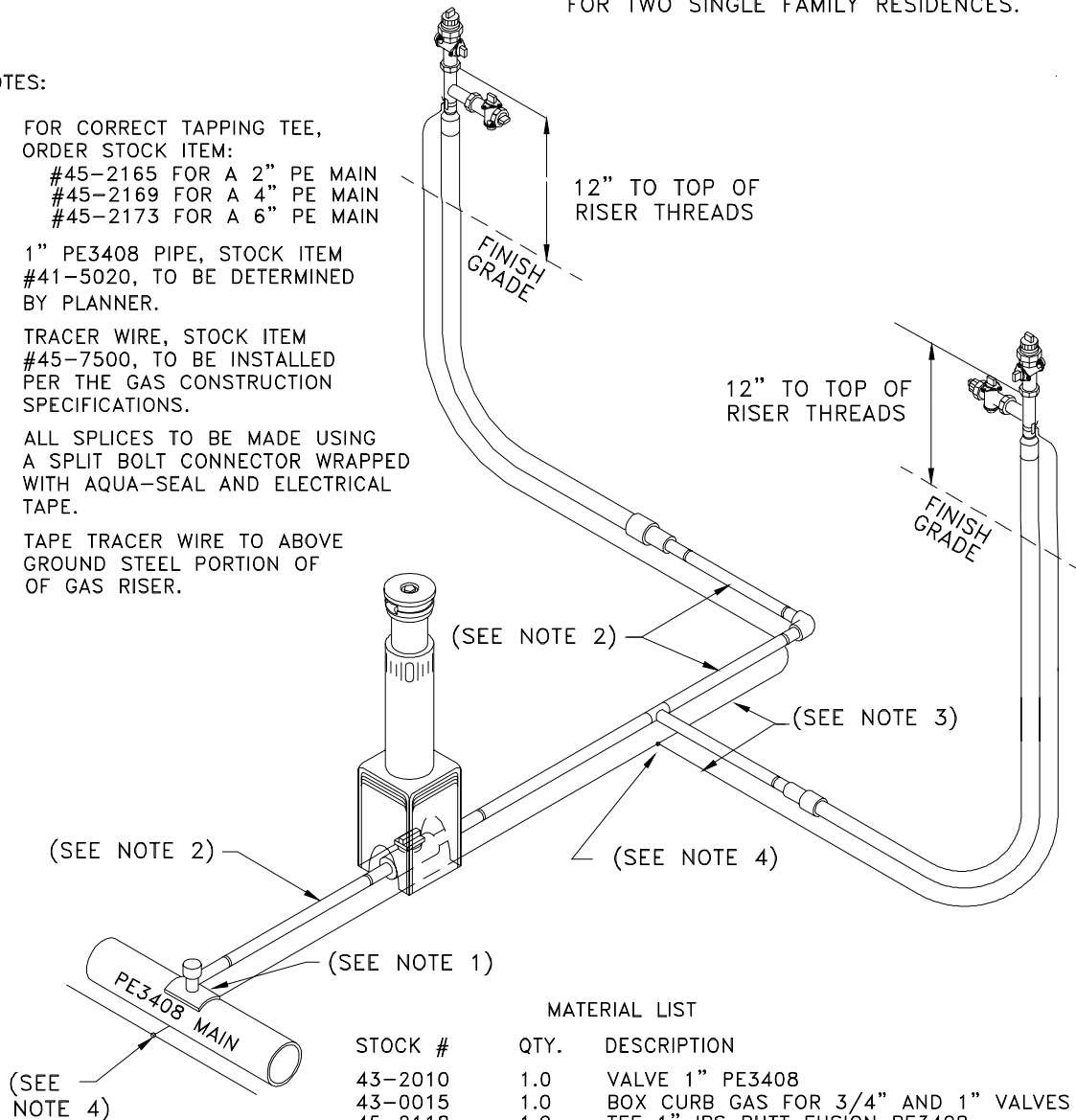


THIS COMPATIBLE UNIT IS TO BE USED ONLY
FOR TWO SINGLE FAMILY RESIDENCES.

NOTES:

- 1) FOR CORRECT TAPPING TEE, ORDER STOCK ITEM:
#45-2165 FOR A 2" PE MAIN
#45-2169 FOR A 4" PE MAIN
#45-2173 FOR A 6" PE MAIN
- 2) 1" PE3408 PIPE, STOCK ITEM #41-5020, TO BE DETERMINED BY PLANNER.
- 3) TRACER WIRE, STOCK ITEM #45-7500, TO BE INSTALLED PER THE GAS CONSTRUCTION SPECIFICATIONS.
- 4) ALL SPLICES TO BE MADE USING A SPLIT BOLT CONNECTOR WRAPPED WITH AQUA-SEAL AND ELECTRICAL TAPE.
- 5) TAPE TRACER WIRE TO ABOVE GROUND STEEL PORTION OF OF GAS RISER.



MATERIAL LIST

STOCK #	QTY.	DESCRIPTION
43-2010	1.0	VALVE 1" PE3408
43-0015	1.0	BOX CURB GAS FOR 3/4" AND 1" VALVES
45-2118	1.0	TEE 1" IPS BUTT FUSION PE3408
45-0732	1.0	ELBOW PE3408 90 DEGREE 1" IPS BUTT FUSION
45-1904	2.0	RISER GAS 1"
43-0040	2.0	COCK GAS METER 3/4"
43-0115	2.0	COCK GAS METER 1" (INSULATED)
45-1710	2.0	PLUG PIPE 3/4" BLACK
45-1720	2.0	PLUG PIPE 1" BLACK
19-1670	2.0	CONN SPLIT/BOLT COPPER MAX #10 STR



ENGINEERING & CONSTRUCTION STANDARD
SECTION 5 GAS CONSTRUCTION DRAWINGS
SERVICE TAP INSTALLATIONS
1" PE COMPLETE BRANCH SERVICE
OFF PE MAIN

SHEET 12 OF 33

DRAWING NUMBER
STI09G

DRAWN	DESIGN	SUPR	DATE	REV
KS	KS	HB	5/98	7/06