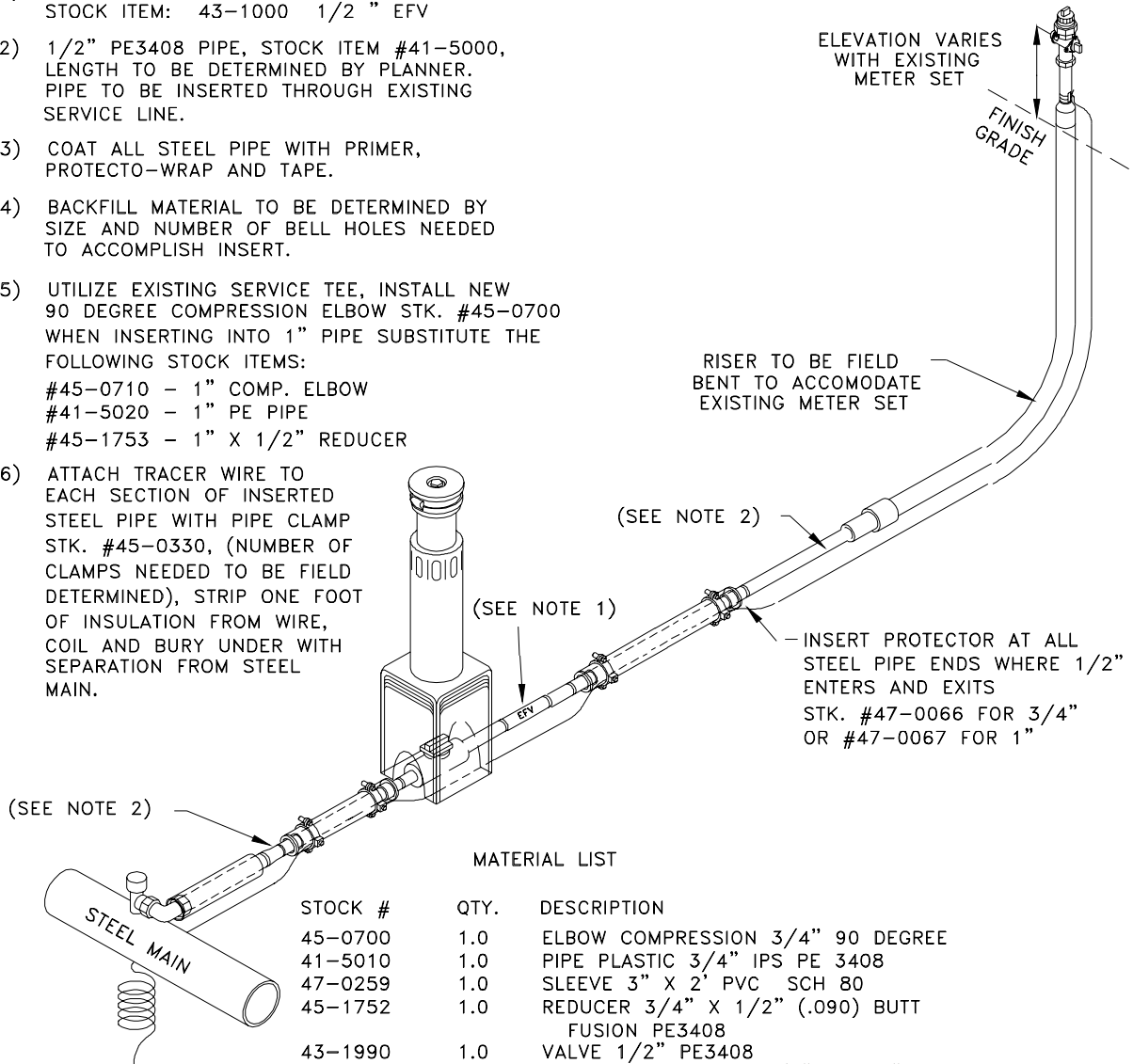


NOTES:

- 1) IF EXCESS FLOW VALVE IS REQUIRED, ORDER STOCK ITEM: 43-1000 1/2" EFV
- 2) 1/2" PE3408 PIPE, STOCK ITEM #41-5000, LENGTH TO BE DETERMINED BY PLANNER. PIPE TO BE INSERTED THROUGH EXISTING SERVICE LINE.
- 3) COAT ALL STEEL PIPE WITH PRIMER, PROTECTO-WRAP AND TAPE.
- 4) BACKFILL MATERIAL TO BE DETERMINED BY SIZE AND NUMBER OF BELL HOLES NEEDED TO ACCOMPLISH INSERT.
- 5) UTILIZE EXISTING SERVICE TEE, INSTALL NEW 90 DEGREE COMPRESSION ELBOW STK. #45-0700 WHEN INSERTING INTO 1" PIPE SUBSTITUTE THE FOLLOWING STOCK ITEMS:
 #45-0710 - 1" COMP. ELBOW
 #41-5020 - 1" PE PIPE
 #45-1753 - 1" X 1/2" REDUCER
- 6) ATTACH TRACER WIRE TO EACH SECTION OF INSERTED STEEL PIPE WITH PIPE CLAMP STK. #45-0330, (NUMBER OF CLAMPS NEEDED TO BE FIELD DETERMINED), STRIP ONE FOOT OF INSULATION FROM WIRE, COIL AND BURY UNDER WITH SEPARATION FROM STEEL MAIN.



MATERIAL LIST

STOCK #	QTY.	DESCRIPTION
45-0700	1.0	ELBOW COMPRESSION 3/4" 90 DEGREE
41-5010	1.0	PIPE PLASTIC 3/4" IPS PE 3408
47-0259	1.0	SLEEVE 3" X 2' PVC SCH 80
45-1752	1.0	REDUCER 3/4" X 1/2" (.090) BUTT FUSION PE3408
43-1990	1.0	VALVE 1/2" PE3408
43-0015	1.0	BOX CURB GAS FOR 3/4" AND 1" VALVES
45-1900	1.0	RISER GAS 1/2"
43-0110	1.0	COCK GAS METER 3/4" (INSULATED)
45-1710	1.0	PLUG PIPE 3/4" BLACK



ENGINEERING & CONSTRUCTION STANDARD

SECTION 5 GAS CONSTRUCTION DRAWINGS
 SERVICE TAP INSTALLATIONS
 1/2" PE COMPLETE SINGLE SERVICE INSERT
 REPLACEMENT OFF STEEL MAIN

SHEET 21 OF 33

DRAWING NUMBER

ST118G

DRAWN	DESIGN	SUPR	DATE	REV
KS	KS	HB	5/98	7/06