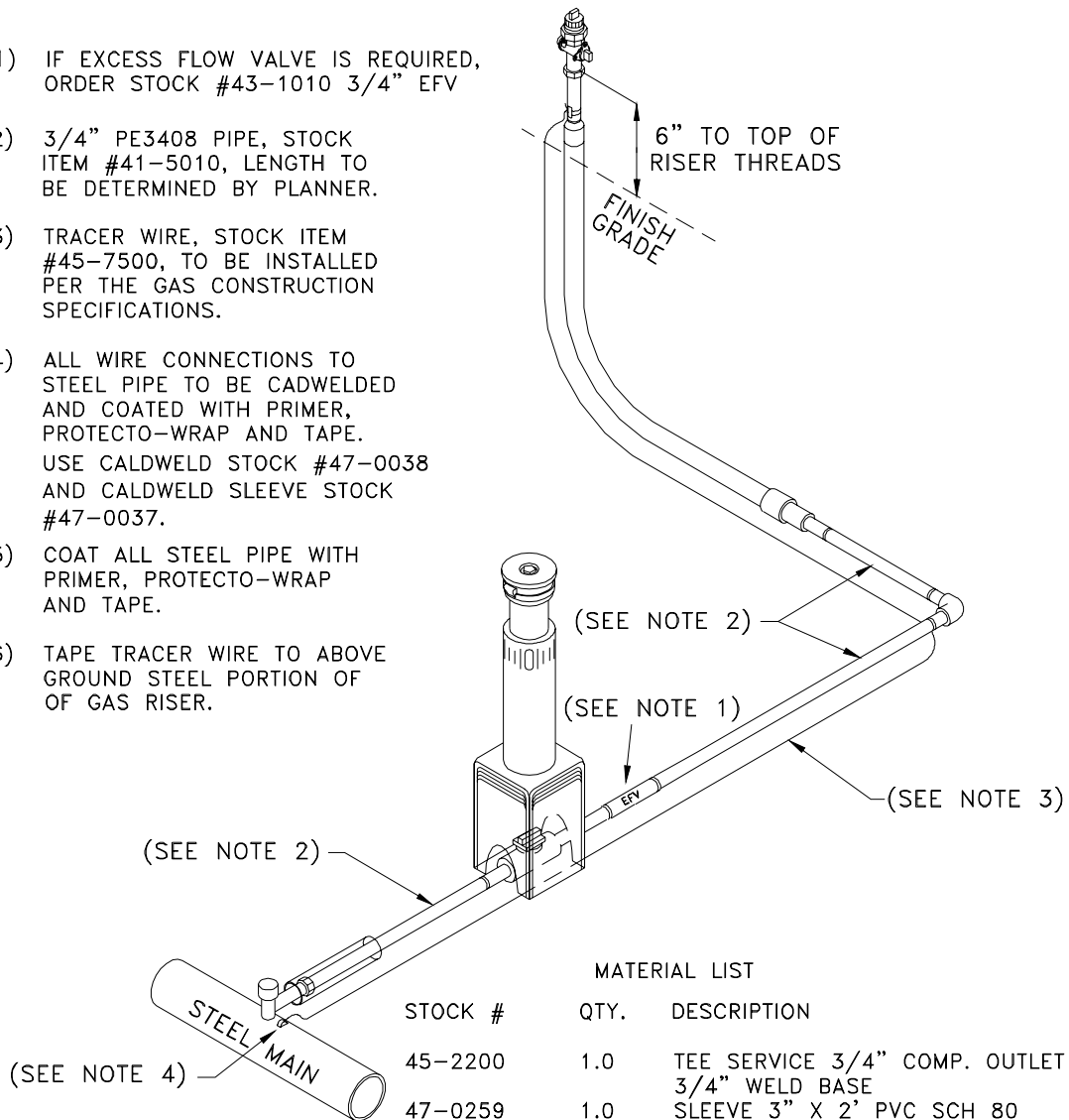


NOTES:

- 1) IF EXCESS FLOW VALVE IS REQUIRED, ORDER STOCK #43-1010 3/4" EFV
- 2) 3/4" PE3408 PIPE, STOCK ITEM #41-5010, LENGTH TO BE DETERMINED BY PLANNER.
- 3) TRACER WIRE, STOCK ITEM #45-7500, TO BE INSTALLED PER THE GAS CONSTRUCTION SPECIFICATIONS.
- 4) ALL WIRE CONNECTIONS TO STEEL PIPE TO BE CADWELDED AND COATED WITH PRIMER, PROTECTO-WRAP AND TAPE. USE CALDWELD STOCK #47-0038 AND CALDWELD SLEEVE STOCK #47-0037.
- 5) COAT ALL STEEL PIPE WITH PRIMER, PROTECTO-WRAP AND TAPE.
- 6) TAPE TRACER WIRE TO ABOVE GROUND STEEL PORTION OF OF GAS RISER.



MATERIAL LIST

STOCK #	QTY.	DESCRIPTION
45-2200	1.0	TEE SERVICE 3/4" COMP. OUTLET X 3/4" WELD BASE
47-0259	1.0	SLEEVE 3" X 2' PVC SCH 80
43-2000	1.0	VALVE 3/4" PE3408
43-0015	1.0	BOX CURB GAS FOR 3/4" AND 1" VALVES
45-0726	1.0	ELBOW PE3408 90 DEGREE 3/4" IPS BUTT FUSION
45-1899	1.0	RISER GAS METER 3/4" WITHOUT BYPASS
43-0110	1.0	COCK GAS METER 3/4" (INSULATED)
45-1710	1.0	PLUG PIPE 3/4" BLACK

DRAWN	DESIGN	SUPR	DATE	REV
KS	KS	HB	5/98	7/06