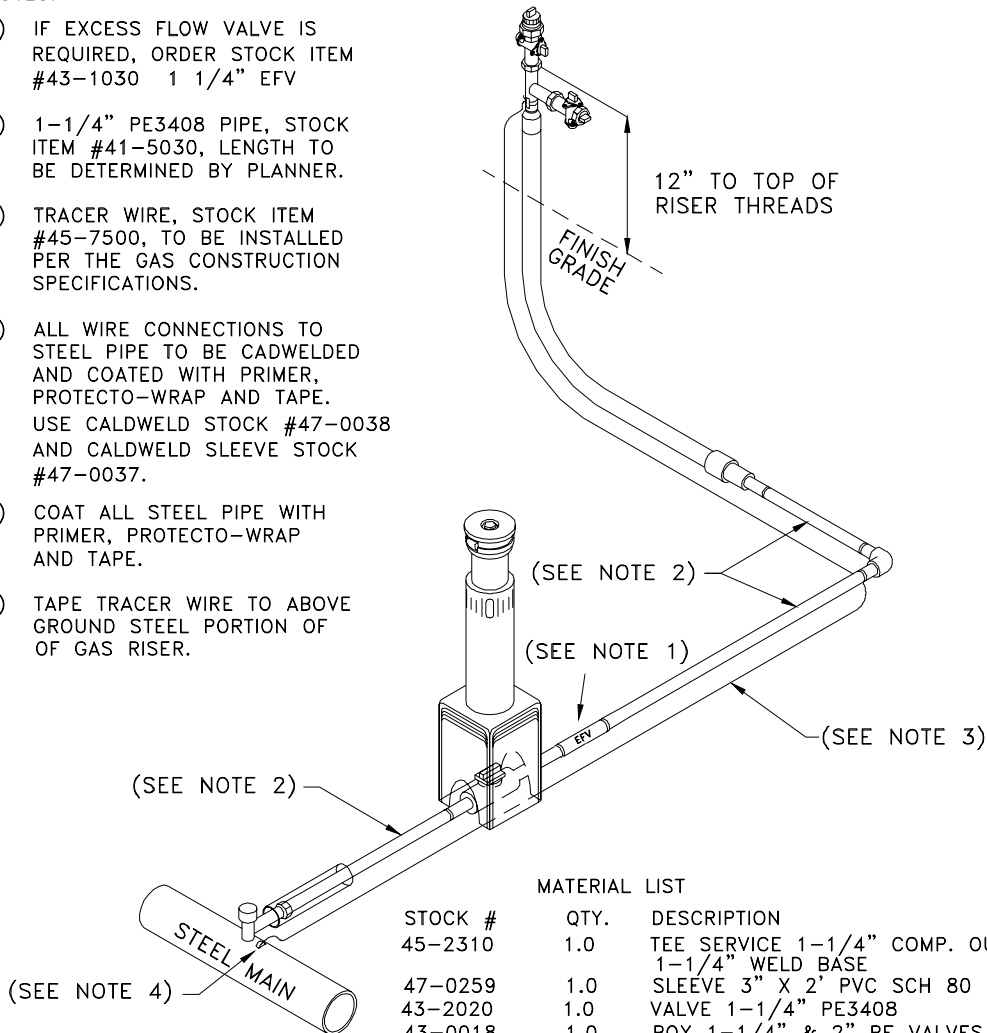


NOTES:

- 1) IF EXCESS FLOW VALVE IS REQUIRED, ORDER STOCK ITEM #43-1030 1 1/4" EFV
- 2) 1-1/4" PE3408 PIPE, STOCK ITEM #41-5030, LENGTH TO BE DETERMINED BY PLANNER.
- 3) TRACER WIRE, STOCK ITEM #45-7500, TO BE INSTALLED PER THE GAS CONSTRUCTION SPECIFICATIONS.
- 4) ALL WIRE CONNECTIONS TO STEEL PIPE TO BE CADWELDED AND COATED WITH PRIMER, PROTECTO-WRAP AND TAPE. USE CALDWELD STOCK #47-0038 AND CALDWELD SLEEVE STOCK #47-0037.
- 5) COAT ALL STEEL PIPE WITH PRIMER, PROTECTO-WRAP AND TAPE.
- 6) TAPE TRACER WIRE TO ABOVE GROUND STEEL PORTION OF OF GAS RISER.



MATERIAL LIST

STOCK #	QTY.	DESCRIPTION
45-2310	1.0	TEE SERVICE 1-1/4" COMP. OUTLET X 1-1/4" WELD BASE
47-0259	1.0	SLEEVE 3" X 2' PVC SCH 80
43-2020	1.0	VALVE 1-1/4" PE3408
43-0018	1.0	BOX 1-1/4" & 2" PE VALVES TRAFFIC RATED H-20
45-0735	1.0	ELBOW PE3408 90 DEGREE 1-1/4" IPS BUTT FUSION
45-1907	1.0	RISER GAS 1-1/4"
43-0116	1.0	COCK GAS METER 1-1/4" (INSULATED)
43-0050	1.0	COCK GAS METER 1"
45-1730	1.0	PLUG PIPE 1-1/4" BLACK
45-1720	1.0	PLUG PIPE 1" BLACK