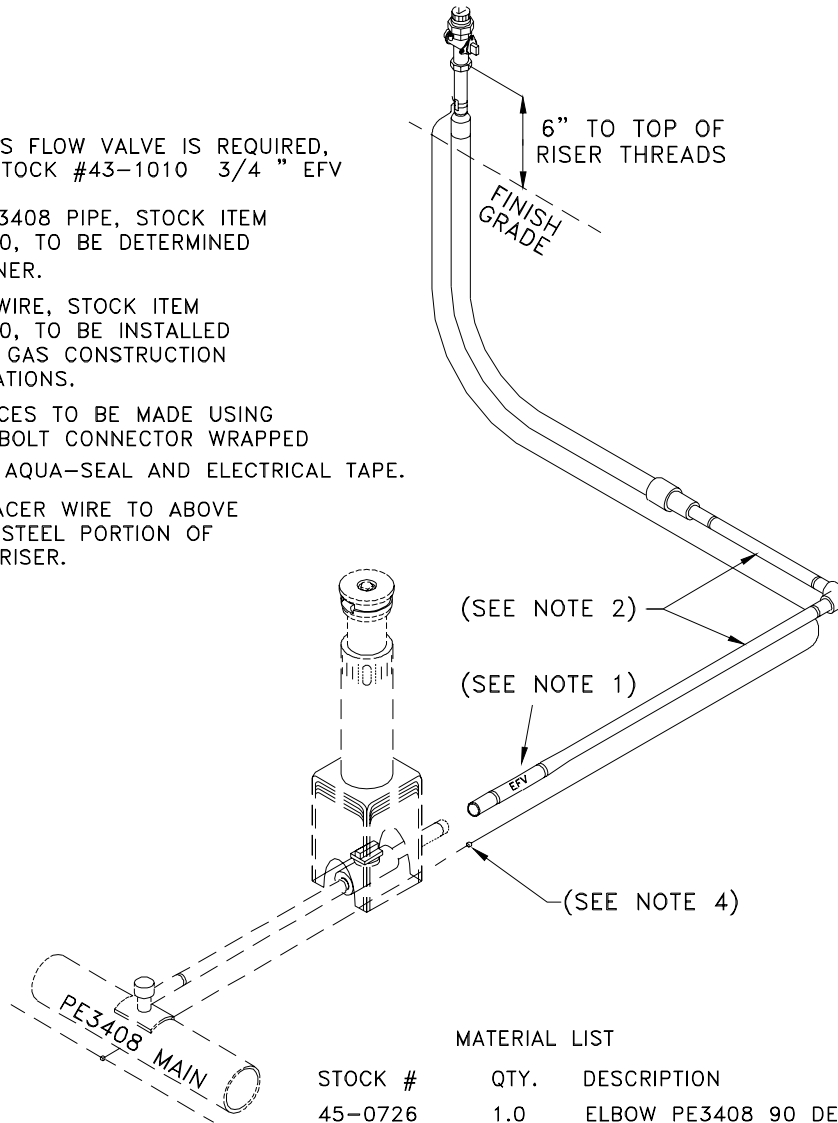


NOTES:

- 1) IF EXCESS FLOW VALVE IS REQUIRED, ORDER STOCK #43-1010 3/4" EFV
- 2) 3/4" PE3408 PIPE, STOCK ITEM #41-5010, TO BE DETERMINED BY PLANNER.
- 3) TRACER WIRE, STOCK ITEM #45-7500, TO BE INSTALLED PER THE GAS CONSTRUCTION SPECIFICATIONS.
- 4) ALL SPLICES TO BE MADE USING A SPLIT BOLT CONNECTOR WRAPPED WITH AQUA-SEAL AND ELECTRICAL TAPE.
- 5) TAPE TRACER WIRE TO ABOVE GROUND STEEL PORTION OF OF GAS RISER.



MATERIAL LIST

STOCK #	QTY.	DESCRIPTION
45-0726	1.0	ELBOW PE3408 90 DEGREE 3/4" IPS BUTT FUSION
45-1899	1.0	RISER GAS 3/4"
43-0110	1.0	COCK GAS METER 3/4" (INSULATED)
45-1710	1.0	PLUG PIPE 3/4" BLACK
19-1670	1.0	CONN SPLIT/BOLT COPPER MAX #10 STR



ENGINEERING & CONSTRUCTION STANDARD

SHEET 29 OF 33

SECTION 5 GAS CONSTRUCTION DRAWINGS

DRAWING NUMBER

SERVICE TAP INSTALLATIONS
SERVICE COMPLETIONS

STI26G

3/4" PE SINGLE SERVICE COMPLETION

DRAWN	DESIGN	SUPR	DATE	REV
KS	KS	HB	5/98	7/06