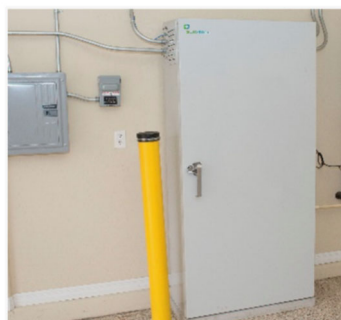


Clean Energy Programs

MONTHLY REPORT



FEBRUARY 2022





Contents

Clean Energy Programs ¹ Update	3
Solar PV	3
Low Income Solar Energy Program (LISEP)	4
Solar Thermal Heating (Northern Nevada Gas Customers)	6
Wind	7
Hydro	7
Energy Storage	8
Electric Vehicles	9
Clean Energy Programs Summary	11
Solar PV	12
Low Income Solar Energy Program (LISEP)	13
Energy Storage	14
Electric Vehicles	15
Legislation, Regulation, and Compliance	17
Workshops, Meetings, and Events	18
Contact Us	19

¹ The clean energy programs are the renewable energy (solar, solar thermal, wind, and hydro), energy storage, and electric vehicle charging station incentives programs administered by NV Energy under the laws of the Nevada Legislature and regulated by the Public Utilities Commission of Nevada.





Solar PV

Program Applications Update

The solar incentives program is fully subscribed. In February, zero applications were closed out.

February						
	Incentives Paid		Completed kW		Completed Applications	
	North	South	North	South	North	South
Residential/Small Business	\$0	\$0	0	0	0	0
Large Commercial/Industrial	\$0	\$0	0	0	0	0
Low-Income/Nonprofit	\$0	\$0	0	0	0	0
School	\$0	\$0	0	0	0	0
Public Entity	\$0	\$0	0	0	0	0
Public and Other	\$0	\$0	0	0	0	0
Small Commercial	\$0	\$0	0	0	0	0
Total	\$0	\$0	0	0	0	0

Calendar Year to Date						
	Incentives Paid		Completed kW		Completed Applications	
	North	South	North	South	North	South
Residential/Small Business	\$0	\$0	0	0	0	0
Large Commercial/Industrial	\$0	\$0	0	0	0	0
Low-Income/Nonprofit	\$0	\$0	0	0	0	0
School	\$0	\$0	0	0	0	0
Public Entity	\$0	\$0	0	0	0	0
Public and Other	\$0	\$0	0	0	0	0
Small Commercial	\$0	\$0	0	0	0	0
Total	\$0	\$0	0	0	0	0

Inception (2004) to Present						
	Incentives Paid		Completed kW		Completed Applications	
	North	South	North	South	North	South
Residential/Small Business	\$9,681,403	\$56,339,046	15,636	237,154	2,945	36,122
Large Commercial/Industrial	\$767,882	\$2,348,851	3,651	7,679	14	21
Low-Income/Nonprofit	\$1,890,234	\$2,919,625	605	2,332	15	78
School	\$60,825,773	\$49,252,549	14,458	13,019	133	171
Public Entity	\$255,082	\$259,026	332	938	4	5
Public and Other	\$37,963,190	\$34,911,442	9,034	9,466	192	160
Small Commercial	\$40,594	\$327,694	410	2,133	18	39
Total	\$111,424,158	\$146,358,233	44,126	272,720	3,321	36,596





Low Income Solar Energy Program (LISEP)¹

Program Applications Update

In February, LISEP received zero applications and zero applications were closed out.

February						
	Incentives Paid		Completed Capacity (kW)		Completed Applications	
	North	South	North	South	North	South
Low Income Solar Energy Program	\$0	\$0	0	0	0	0

Calendar Year to Date						
	Incentives Paid		Completed Capacity (kW)		Completed Applications	
	North	South	North	South	North	South
Low Income Solar Energy Program	\$0	\$0	0	0	0	0

Inception (2018) to Present						
	Incentives Paid		Completed Capacity (kW)		Completed Applications	
	North	South	North	South	North	South
Low Income Solar Energy Program	\$1,062,461	\$2,285,365	600	1,453	41	22

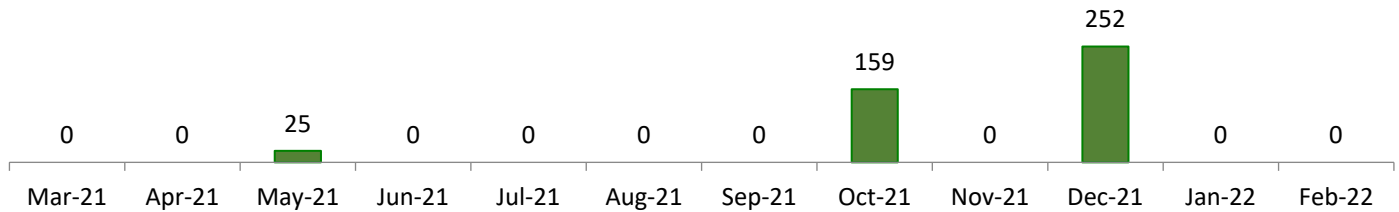
¹ LISEP payments began February 1, 2018 and have an incentive cap of \$1 million per year, for up to six years, as designated in Senate Bill 145.





Solar PV / LISEP

Solar PV / LISEP Incentives Capacity Installed by Month (kW)¹



Solar PV / LISEP Incentives Paid Since July 1, 2010

Spending Toward \$295,270,000 Cap		
	Incentives Paid	Completed kW
Total	\$243,743,605	314,263

Average Solar PV / LISEP Incentives Installation Cost Per Watt AC-CEC

Cost Per Watt		
Year	UFI/EPBB	PBI
2021	\$4.23	\$0.00
2022	\$0.00	\$0.00

¹ **Solar PV / LISEP Incentives Capacity Installed by Month (kW)** chart represents interconnected incentivized capacity, which are applications that have received permission to operate, by the month they were interconnected. The **Solar Incentives Applications Completed Capacity by Month (kW)** chart, which represented total interconnected incentivized capacity only after administrative tasks have been completed to close out an application, has been removed.





Solar Thermal Heating (Northern Nevada Gas Customers)

Program Applications Update

In February, the solar thermal heating incentives program received zero applications and zero applications were closed out.

February			
	Active Applications	Incentives Reserved	Incentives Paid
	North	North	North
Residential/Small Business	0	\$0	\$0
Large Commercial/Industrial	0	\$0	\$0
Low-Income/Nonprofit	0	\$0	\$0
School	0	\$0	\$0
Public Entity	0	\$0	\$0
Public and Other	0	\$0	\$0
Small Commercial	0	\$0	\$0
Total	0	\$0	\$0

Calendar Year to Date		
	Incentives Paid	Completed Applications
	North	North
Residential/Small Business	\$0	0
Large Commercial/Industrial	\$0	0
Low-Income/Nonprofit	\$0	0
School	\$0	0
Public Entity	\$0	0
Public and Other	\$0	0
Small Commercial	\$0	0
Total	\$0	0

Inception (2004) to Present		
	Incentives Paid	Completed Applications
	North	North
Residential/Small Business	\$26,907	13
Large Commercial/Industrial	\$0	0
Low-Income/Nonprofit	\$0	0
School	\$8,949	1
Public Entity	\$0	0
Public and Other	\$99,747	5
Small Commercial	\$0	0
Total	\$135,603	19





Wind

Program Applications Update

The wind incentives program is fully subscribed and all incentive applications are closed out.

Inception (2004) to Present						
	Incentives Paid		Completed Capacity (kW)		Completed Applications	
	North	South	North	South	North	South
Residential/Small Business	\$1,403,680	\$49,183	574	23	54	6
Large Commercial/Industrial	\$0	\$0	0	0	0	0
Low-Income/Nonprofit	\$0	\$0	0	0	0	0
School	\$1,369,200	\$7,800	365	2	4	1
Public Entity	\$0	\$0	0	0	0	0
Public and Other	\$295,200	\$0	85	0	10	0
Small Commercial	\$0	\$0	0	0	0	0
Agriculture	\$23,121,745	\$0	9,069	0	91	0
Total	\$26,189,825	\$56,983	10,093	25	159	7

Hydro

Program Applications Update

The hydro incentives program is fully subscribed and all incentive applications are closed out.

Inception (2004) to Present						
	Incentives Paid		Completed Capacity (kW)		Completed Applications	
	Net Metered	Non-Net Metered	Net Metered	Non-Net Metered	Net Metered	Non-Net Metered
Residential/Small Business	\$0	\$0	0	0	0	0
Large Commercial/Industrial	\$0	\$0	0	0	0	0
Low-Income/Nonprofit	\$0	\$0	0	0	0	0
School	\$0	\$0	0	0	0	0
Public Entity	\$0	\$0	0	0	0	0
Public and Other	\$0	\$0	0	0	0	0
Small Commercial	\$0	\$0	0	0	0	0
Agriculture	\$395,000	\$1,702,500	158	1,187	3	4
Total	\$395,000	\$1,702,500	158	1,187	3	4

Wind and Hydro Incentives Paid Since July 1, 2010

Spending Toward \$295,270,000 Cap	
	Incentives Paid
Wind	\$25,946,608
Hydro	\$2,097,500
Total	\$28,044,108





Energy Storage

Program Applications Update

In February, the energy storage incentives program received 47 applications and 53 applications were closed out.

February				
	Incentives Paid		Completed Applications	
	North	South	North	South
Residential/Small Business	\$24,030	\$78,197	13	40
Large Commercial/Industrial	\$0	\$0	0	0
Low-Income/Nonprofit	\$0	\$0	0	0
School	\$0	\$0	0	0
Public Entity	\$0	\$0	0	0
Public and Other	\$0	\$0	0	0
Small Commercial	\$0	\$0	0	0
Total	\$24,030	\$78,197	13	40

Calendar Year to Date				
	Incentives Paid		Completed Applications	
	North	South	North	South
Residential/Small Business	\$24,030	\$78,197	13	40
Large Commercial/Industrial	\$0	\$0	0	0
Low-Income/Nonprofit	\$0	\$0	0	0
School	\$0	\$0	0	0
Public Entity	\$0	\$0	0	0
Public and Other	\$0	\$0	0	0
Small Commercial	\$0	\$0	0	0
Total	\$24,030	\$78,197	13	40

Inception (2018) to Present				
	Incentives Paid		Completed Applications	
	North	South	North	South
Residential/Small Business	\$604,439	\$1,060,036	275	482
Large Commercial/Industrial	\$0	\$0	0	0
Low-Income/Nonprofit	\$0	\$0	0	0
School	\$0	\$0	0	0
Public Entity	\$0	\$300,000	0	1
Public and Other	\$0	\$0	0	0
Small Commercial	\$0	\$0	0	0
Total	\$604,439	\$1,360,036	275	483





Electric Vehicles

Program Applications Update

In February, the electric vehicle charging station incentives program received 15 applications and two application was closed out.

February				
	Incentives Paid		Completed Applications	
	North	South	North	South
Workplace	\$0	\$0	0	0
Fleet	\$0	\$0	0	0
Multi-Family	\$0	\$0	0	0
Public Charging	\$0	\$30,000	0	1
Lower-Income Multi-Family	\$0	\$0	0	0
Governmental	\$0	\$0	0	0
Residential Single-Family	\$0	\$500	0	1
Lower Income Residential	\$0	\$0	0	0
Custom Grant	\$0	\$0	0	0
EV School Bus	\$0	\$0	0	0
Nevada Electric Highway	\$0	\$0	0	0
Total	\$0	\$30,500	0	2

Calendar Year to Date				
	Incentives Paid		Completed Applications	
	North	South	North	South
Workplace	\$0	\$0	0	0
Fleet	\$0	\$0	0	0
Multi-Family	\$0	\$0	0	0
Public Charging	\$0	\$30,000	0	1
Lower-Income Multi-Family	\$0	\$0	0	0
Governmental	\$0	\$0	0	0
Residential Single-Family	\$0	\$1,000	0	2
Lower Income Residential	\$0	\$0	0	0
Custom Grant	\$0	\$0	0	0
EV School Bus	\$0	\$0	0	0
Nevada Electric Highway	\$0	\$0	0	0
Total	\$0	\$31,000	0	3





Electric Vehicles

Inception (2018) to Present				
	Incentives Paid		Completed Applications	
	North	South	North	South
Workplace	\$87,131	\$379,728	5	25
Fleet	\$75,000	\$0	1	0
Multi-Family	\$30,000	\$202,800	3	7
Public Charging	\$11,939	\$104,000	1	4
Lower-Income Multi-Family	\$0	\$0	0	0
Governmental	\$0	\$30,000	0	1
Residential Single-Family	\$500	\$2,000	1	4
Lower Income Residential	\$0	\$0	0	0
Custom Grant	\$246,482	\$809,081	2	1
EV School Bus	\$0	\$0	0	0
Nevada Electric Highway	\$1,817,309	\$434,586	7	3
Total	\$2,268,361	\$1,962,195	20	45





Clean Energy Programs Summary

Clean Energy Programs Incentive Applications Summary¹

All Program Application Activity Since July 1, 2010 Toward \$295,270,000 Cap				
	Incentives Paid ²	Incentives	Incentives Available ⁴	Incentives Total ⁵
Solar PV	\$240,395,779	\$608,947	\$0	\$241,004,726
LISEP	\$3,347,826	\$1,816,791	\$328,152	\$5,492,769
Wind	\$25,946,608	\$0	\$0	\$25,946,608
Hydro	\$2,097,500	\$0	\$0	\$2,097,500
Energy Storage	\$1,964,475	\$1,578,097	\$2,185,826	\$5,728,397
Electric Vehicles	\$4,230,556	\$5,610,851	\$5,158,593	\$15,000,000
Total	\$277,982,743	\$9,614,686	\$7,672,571	\$295,270,000
Pending Activity ⁶	\$153,217	\$349,435	(\$502,652)	

Clean Energy Programs Incentive Tracking Summary⁷

All Incentive Activity Since July 1, 2010						
	Incentive Disbursements ⁸	Incentive Liabilities ⁹	Incentive Availability ¹⁰	Incentives Total	Incentives Submitted ¹¹	Remaining Availability ¹²
Solar PV	\$240,395,779	\$608,947	\$0	\$241,004,726	\$0	\$0
LISEP	\$3,491,043	\$2,120,029	(\$118,303)	\$5,492,769	\$708,992	(\$827,295)
Wind	\$25,946,608	\$0	\$0	\$25,946,608	\$0	\$0
Hydro	\$2,097,500	\$0	\$0	\$2,097,500	\$0	\$0
Energy Storage	\$1,964,475	\$1,578,097	\$2,185,827	\$5,728,398	\$57,773	\$2,128,054
Electric Vehicles	\$4,240,556	\$5,657,049	\$5,102,396	\$15,000,000	\$31,000	\$5,071,396
Total	\$278,135,960	\$9,964,121	\$7,169,919	\$295,270,000	\$797,765	\$6,372,154
Pending Activity	(\$153,217)	(\$349,435)	\$502,652			

Renewable Energy Generating Systems Capacity Completed Since July 1, 2010 and Reserved

Solar PV, LISEP, Wind, and Hydro Programs Capacity Summary			
	Capacity (kW)	Capacity (kW)	Capacity (kW)
	Completed		Total
Solar PV	312,210	55	312,264
LISEP	2,053	1,137	3,190
Wind	10,005	0	10,005
Hydro	1,346	0	1,346
Total	325,614	1,192	326,806

¹ **Clean Energy Programs Incentive Applications Summary** table (originally named *Clean Energy Programs Incentive Summary*) excludes the portion of funds that are planned to be paid for by the Governor's Office of Energy (GOE) incentive funds.

² **Incentives Paid** are program dollars from applications that have been paid and the application closeout process completed, plus performance-based incentive payments recorded in the application system.

³ **Incentives Reserved** are program dollars from applications that have an active Reservation and are either still active or the application closeout process has not yet been completed, plus the balance of what is left to pay for performance-based incentive projects.

⁴ **Incentives Available** are program dollars that are not assigned as paid or reserved as defined in footnotes 2 and 3.

⁵ **Incentives Total** are the total program dollars allotted for each program as of the end of the month.

⁶ **Pending Activity** shows the variance between application system records and general ledger records (and vice versa). Any variances will be explained in the **Monthly Report Variances** section starting on page 15.

⁷ **Clean Energy Programs Incentive Tracking Summary** table represents a summary of general ledger activity following generally accepted accounting principles (GAAP) and application activity that includes all current and pending liabilities (submitted, but not yet obligated funds).

⁸ **Incentives Disbursements** are funds that have been vouchered according to the general ledger.

⁹ **Incentive Liabilities** are funds that have been obligated for payment for projects issued a Reservation and are still active, plus the balance of what is obligated for performance-based incentive projects.

¹⁰ **Incentive Availability** are currently unobligated funds.

¹¹ **Incentives Submitted** are funds for applications that have been submitted but not yet approved for an incentive reservation. This also includes applications that have received conditional reservations, which are reservations for payment only if funds become available for that program.

¹² **Remaining Availability** are unobligated funds available for new applications.





Solar PV

Program Applications Summary Monthly Detail

In February, \$0 was paid out and \$0 was reserved. There was \$0 of attrition and \$0 of newly available funds allocated to the energy storage incentives program.¹

Beginning February Balance							
	Incentives Paid		Incentives Reserved		Incentives Available		
	North	South	North	South			
Residential/Small Business	\$6,228,199	\$52,546,189	\$0	\$45,047			
Large Commercial/Industrial	\$767,882	\$2,348,851	\$100,459	\$73,820			
Low-Income/Nonprofit	\$1,890,234	\$2,919,625	\$2,809	\$145,195			
School	\$57,391,230	\$48,612,179	\$0	\$0			
Public Entity	\$255,082	\$259,026	\$0	\$197,579			
Public and Other	\$32,799,171	\$34,009,823	\$0	\$0			
Small Commercial	\$40,594	\$327,694	\$17,953	\$26,085			
Total	\$99,372,392	\$141,023,387	\$121,221	\$487,726	\$0		

February Activity								
	Incentives Paid		Incentives Reserved		Attrition		Newly Available	
	North	South	North	South	North	South	North	South
Residential/Small Business	\$0	\$0	\$0	\$0	\$0	\$0	\$0	\$0
Large Commercial/Industrial	\$0	\$0	\$0	\$0	\$0	\$0	\$0	\$0
Low-Income/Nonprofit	\$0	\$0	\$0	\$0	\$0	\$0	\$0	\$0
School	\$0	\$0	\$0	\$0	\$0	\$0	\$0	\$0
Public Entity	\$0	\$0	\$0	\$0	\$0	\$0	\$0	\$0
Public and Other	\$0	\$0	\$0	\$0	\$0	\$0	\$0	\$0
Small Commercial	\$0	\$0	\$0	\$0	\$0	\$0	\$0	\$0
Total	\$0	\$0	\$0	\$0	\$0	\$0	\$0	\$0

Ending February Balance							
	Incentives Paid		Incentives Reserved		Incentives Available		
	North	South	North	South			
Residential/Small Business	\$6,228,199	\$52,546,189	\$0	\$45,047			
Large Commercial/Industrial	\$767,882	\$2,348,851	\$100,459	\$73,820			
Low-Income/Nonprofit	\$1,890,234	\$2,919,625	\$2,809	\$145,195			
School	\$57,391,230	\$48,612,179	\$0	\$0			
Public Entity	\$255,082	\$259,026	\$0	\$197,579			
Public and Other	\$32,799,171	\$34,009,823	\$0	\$0			
Small Commercial	\$40,594	\$327,694	\$17,953	\$26,085			
Total	\$99,372,392	\$141,023,387	\$121,221	\$487,726	\$0		

¹ Solar PV Attrition and Newly Available program dollars are allocated to the energy storage incentives program.





Low Income Solar Energy Program (LISEP)¹

Program Applications Summary Monthly Detail

In February, \$0 was paid and \$0 was reserved. There was \$0 of attrition and \$0 of newly available funds.

Beginning February Balance								
	Incentives Paid		Incentives Reserved		Incentives Available			
	North	South	North	South				
Low Income Solar Program	\$1,062,461	\$2,285,365	\$658,164	\$1,158,627	\$328,152			
February Activity								
	Incentives Paid		Incentives Reserved		Attrition		Newly Available	
	North	South	North	South	North	South	North	South
Low Income Solar Program	\$0	\$0	\$0	\$0	\$0	\$0	\$0	
Ending February Balance								
	Incentives Paid		Incentives Reserved		Incentives Available			
	North	South	North	South				
Low Income Solar Program	\$1,062,461	\$2,285,365	\$658,164	\$1,158,627	\$328,152			

¹ LISEP disbursement is capped at \$1,000,000 per year, as designated in Senate Bill 145.





Energy Storage

Program Applications Summary Monthly Detail

In February, \$102,227 was paid out and \$71,283 was reserved. There was \$3,666 of attrition and \$501 of newly available funds.

Beginning February Balance								
	Incentives Paid		Incentives Reserved		Incentives Available			
	North	South	North	South				
Residential/Small Business	\$580,410	\$981,839	\$266,190	\$647,018				
Large Commercial/Industrial	\$0	\$0	\$300,000	\$400,000				
Low-Income/Nonprofit	\$0	\$0	\$0	\$0				
School	\$0	\$0	\$0	\$0				
Public Entity	\$0	\$300,000	\$0	\$0				
Public and Other	\$0	\$0	\$0	\$0				
Small Commercial	\$0	\$0	\$0	\$0				
Total	\$580,410	\$1,281,839	\$566,190	\$1,047,018	\$2,252,942			
February Activity								
	Incentives Paid		Incentives Reserved		Attrition		Newly Available	
	North	South	North	South	North	South	North	South
Residential/Small Business	\$24,030	\$78,197	\$22,497	\$48,786	\$0	\$3,666	\$0	\$501
Large Commercial/Industrial	\$0	\$0	\$0	\$0	\$0	\$0	\$0	\$0
Low-Income/Nonprofit	\$0	\$0	\$0	\$0	\$0	\$0	\$0	\$0
School	\$0	\$0	\$0	\$0	\$0	\$0	\$0	\$0
Public Entity	\$0	\$0	\$0	\$0	\$0	\$0	\$0	\$0
Public and Other	\$0	\$0	\$0	\$0	\$0	\$0	\$0	\$0
Small Commercial	\$0	\$0	\$0	\$0	\$0	\$0	\$0	\$0
Total	\$24,030	\$78,197	\$22,497	\$48,786	\$0	\$3,666	\$0	\$501
Ending February Balance								
	Incentives Paid		Incentives Reserved		Incentives Available			
	North	South	North	South				
Residential/Small Business	\$604,439	\$1,060,036	\$264,657	\$613,440	Solar PV February Attrition \$0 Solar PV February Newly Available \$0 Total Available \$2,185,826			
Large Commercial/Industrial	\$0	\$0	\$300,000	\$400,000				
Low-Income/Nonprofit	\$0	\$0	\$0	\$0				
School	\$0	\$0	\$0	\$0				
Public Entity	\$0	\$300,000	\$0	\$0				
Public and Other	\$0	\$0	\$0	\$0				
Small Commercial	\$0	\$0	\$0	\$0				
Total	\$604,439	\$1,360,036	\$564,657	\$1,013,440				





Electric Vehicles

Program Applications Summary Monthly Detail

In February, \$30,500 was paid out and \$135,451 was reserved. There was \$0 of attrition and \$0 of newly available funds.

Beginning February Balance								
	Incentives Paid		Incentives Reserved		Incentives Available			
	North	South	North	South				
Workplace	\$87,131	\$379,728	\$56,000	\$164,479				
Fleet	\$75,000	\$0	\$93,732	\$291,849				
Multi-Family	\$30,000	\$202,800	\$108,499	\$673,539				
Public Charging	\$11,939	\$74,000	\$200,000	\$204,000				
Lower-Income Multi-Family	\$0	\$0	\$0	\$0				
Governmental	\$0	\$30,000	\$97,642	\$40,950				
Residential Single-Family	\$500	\$1,500	\$2,250	\$13,750				
Lower Income Residential	\$0	\$0	\$0	\$0				
Custom Grant	\$246,482	\$809,081	\$0	\$0				
EV School Bus	\$0	\$0	\$1,812,504	\$1,485,750				
Nevada Electric Highway	\$1,817,309	\$434,586	\$260,958	\$0				
Total	\$2,268,361	\$1,931,695	\$2,631,584	\$2,874,316	\$5,294,044			

February Activity								
	Incentives Paid		Incentives Reserved		Attrition		Newly Available	
	North	South	North	South	North	South	North	South
Workplace	\$0	\$0	\$0	\$0	\$0	\$0	\$0	\$0
Fleet	\$0	\$0	\$0	\$120,000	\$0	\$0	\$0	\$0
Multi-Family	\$0	\$0	\$0	\$0	\$0	\$0	\$0	\$0
Public Charging	\$0	\$30,000	\$0	\$0	\$0	\$0	\$0	\$0
Lower-Income Multi-Family	\$0	\$0	\$0	\$0	\$0	\$0	\$0	\$0
Governmental	\$0	\$0	\$0	\$0	\$0	\$0	\$0	\$0
Residential Single-Family	\$0	\$500	\$1,714	\$3,737	\$0	\$0	\$0	\$0
Lower Income Residential	\$0	\$0	\$0	\$10,000	\$0	\$0	\$0	\$0
Custom Grant	\$0	\$0	\$0	\$0	\$0	\$0	\$0	\$0
EV School Bus	\$0	\$0	\$0	\$0	\$0	\$0	\$0	\$0
Nevada Electric Highway	\$0	\$0	\$0	\$0	\$0	\$0	\$0	\$0
Total	\$0	\$30,500	\$1,714	\$133,737	\$0	\$0	\$0	\$0





Electric Vehicles

Ending February Balance					
	Incentives Paid		Incentives Reserved		Incentives Available
	North	South	North	South	
Workplace	\$87,131	\$379,728	\$56,000	\$164,479	
Fleet	\$75,000	\$0	\$93,732	\$411,849	
Multi-Family	\$30,000	\$202,800	\$108,499	\$673,539	
Public Charging	\$11,939	\$104,000	\$200,000	\$174,000	
Lower-Income Multi-Family	\$0	\$0	\$0	\$0	
Governmental	\$0	\$30,000	\$97,642	\$40,950	
Residential Single-Family	\$500	\$2,000	\$3,964	\$16,987	
Lower Income Residential	\$0	\$0	\$0	\$10,000	
Custom Grant	\$246,482	\$809,081	\$0	\$0	
EV School Bus	\$0	\$0	\$1,812,504	\$1,485,750	
Nevada Electric Highway	\$1,817,309	\$434,586	\$260,958	\$0	
Total	\$2,268,361	\$1,962,195	\$2,633,298	\$2,977,553	\$5,158,593





Legislation, Regulation, and Compliance

NV Energy continues to provide technical assistance to commercial customers on economic and technical viability for installing energy storage systems at their facilities. This month the clean energy team worked with IKEA and Hyundai Reno on project analysis and incentives available through the large energy storage incentives program.

The clean energy team held meetings with Carson City School District to assist their incentives application for purchase of one electric school bus and charging infrastructure under the 2021/22 electric school bus incentives program.

The Clark County administration and NV Energy started working together to have the County applying for the electric vehicles charging incentives program. The County plans to replace 1,030 existing light duty gasoline vehicles for electric ones in next two to three years.

The resurfacing activity for the last Nevada Electric Highway site is completed and NV Energy is currently in construction closeout phase with the contractor and the Governor's Office of Energy. Please find a table with status for different Nevada electric highway sites:

Site # on GOE Map	Highway	Site Location	Status
1	I-15	Jean	Completed
2	I-15	I-15 / U.S. 93 Jct	Completed
6	I-80	I-80 / U.S. 95 Jct	Removed
17	U.S. 95	Schurz	Completed
18a	U.S. 95	Luning	Completed
19	U.S. 95	Coaldale	Removed
20	U.S. 95	Goldfield	Completed
7	I-80	Lovelock	Removed
8	I-80	Rye Patch	Construction Closeout
10	I-80	Valmy	Removed
24	U.S. 50	Silver Springs	Completed
25	U.S. 50	Middlegate	Completed
26	U.S. 50	Cold Springs	Completed
27	U.S. 50	Austin	Completed

Monthly Report Variances

Continual data reconciliation of the application portal data and decimal rounding will result in marginal variances between reports and any significant variances will be explained.

On Page 11:

There is \$153,217 of pending activity in incentive disbursements:

- \$143,217 of LISEP disbursements are pending GOE reimbursement.
- \$10,000 of EV disbursements are pending GOE reimbursement.

There is \$349,435 of pending activity in incentive liabilities:

- \$303,238 of LISEP liabilities are reservations that will be reimbursed by GOE, if paid.
- \$46,197 of EV liabilities are reservations that will be reimbursed by GOE, if paid.





Workshops, Meetings, and Events

The clean energy programs staff held the following event(s) where they handed out brochures and/or answered questions from the attendees:

- There were no workshops, meetings, or events held this month.



Contact Us

Website

<https://www.nvenergy.com/cleanenergy>

Email

cleanenergy@nvenergy.com

Toll Free

(866) 786-3823

Mailing Address

NV Energy
Attn: Clean Energy Programs
6100 Neil Road
M/S 2A35
Reno, NV 89511

