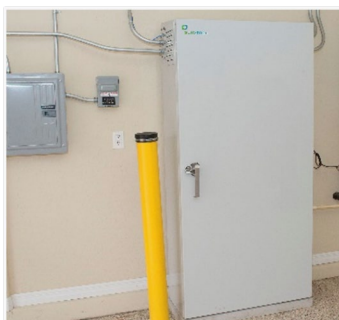


# Clean Energy Programs

MONTHLY REPORT



JUNE 2021





# Contents

Clean Energy Programs Update .....	3
Solar PV .....	3
Low Income Solar Energy Program (LISEP) .....	4
Solar Thermal Heating (Northern Nevada Gas Customers) .....	6
Wind .....	7
Hydro36, .....	7
Energy Storage .....	8
Electric Vehicle Charging Station .....	9
Clean Energy Programs Summary .....	10
Solar PV .....	11
Low Income Solar Energy Program (LISEP) .....	12
Energy Storage .....	13
Electric Vehicle Charging Station .....	14
Legislation, Regulation, and Compliance .....	15
Workshops, Meetings, and Events .....	15
Contact Us .....	16

*The clean energy programs are the renewable energy (solar, solar thermal, wind, and hydro), energy storage, and electric vehicle charging station incentives programs administered by NV Energy under the laws of the Nevada Legislature and regulated by the Public Utilities Commission of Nevada.*





# Solar PV

## Program Update

The solar incentives program is fully subscribed. In June, zero applications were closed out.

June						
	Incentives Paid		Completed kW		Completed Applications	
	North	South	North	South	North	South
Residential/Small Business	\$0	\$189	0	0	0	0
Large Commercial/Industrial	\$535	\$0	0	0	0	0
Low-Income/Nonprofit	\$0	\$0	0	0	0	0
School	\$0	\$0	0	0	0	0
Public Entity	\$0	\$0	0	0	0	0
Public and Other	\$0	\$0	0	0	0	0
Small Commercial	\$0	\$0	0	0	0	0
<b>Total</b>	<b>\$535</b>	<b>\$189</b>	<b>0</b>	<b>0</b>	<b>0</b>	<b>0</b>

Calendar Year to Date						
	Incentives Paid		Completed kW		Completed Applications	
	North	South	North	South	North	South
Residential/Small Business	\$842	\$40,737	5	236	1	37
Large Commercial/Industrial	\$34,883	\$92,455	0	0	0	0
Low-Income/Nonprofit	\$942	\$76,361	0	0	0	0
School	\$0	\$0	0	0	0	0
Public Entity	\$2,784	\$19,536	0	0	0	0
Public and Other	\$0	\$0	0	0	0	0
Small Commercial	\$1,900	\$14,260	0	0	0	0
<b>Total</b>	<b>\$41,351</b>	<b>\$243,349</b>	<b>5</b>	<b>236</b>	<b>1</b>	<b>37</b>

Inception (2004) to Present						
	Incentives Paid		Completed kW		Completed Applications	
	North	South	North	South	North	South
Residential/Small Business	\$9,684,821	\$56,339,377	15,632	237,145	2,945	36,119
Large Commercial/Industrial	\$732,931	\$2,322,576	3,651	7,679	14	21
Low-Income/Nonprofit	\$2,333,552	\$3,727,323	818	2,831	47	84
School	\$60,832,710	\$49,297,179	14,458	13,019	133	171
Public Entity	\$251,291	\$227,071	332	938	4	5
Public and Other	\$37,963,190	\$34,911,442	9,034	9,466	192	160
Small Commercial	\$36,488	\$313,852	410	2,133	18	39
<b>Total</b>	<b>\$111,834,983</b>	<b>\$147,138,820</b>	<b>44,335</b>	<b>273,211</b>	<b>3,353</b>	<b>36,599</b>

The following definitions apply to all Program Update pages:

**Incentives Paid** program dollars are a sum from completed solar incentive applications plus performance-based incentives (PBI) payments paid to date.

**Completed kW** capacity is a sum from completed solar incentive applications plus PBI projects that have interconnected.

**Completed Applications** include applications where the system has interconnected, the check issued and mailed, and all administrative tasks completed to close out the application in the online application portal plus PBI projects that have interconnected.





# Low Income Solar Energy Program (LISEP)

## Program Update

In June, LISEP received zero applications and one application was closed out.

June						
	Incentives Paid		Completed Capacity (kW)		Completed Applications	
	North	South	North	South	North	South
Low Income Solar Energy Program	\$42,188	\$0	25	0	1	0

Calendar Year to Date						
	Incentives Paid		Completed Capacity (kW)		Completed Applications	
	North	South	North	South	North	South
Low Income Solar Energy Program	\$80,307	\$71,685	52	40	2	1

Inception (2018) to Present						
	Incentives Paid		Completed Capacity (kW)		Completed Applications	
	North	South	North	South	North	South
Low Income Solar Energy Program	\$375,614	\$1,008,547	228	701	7	14

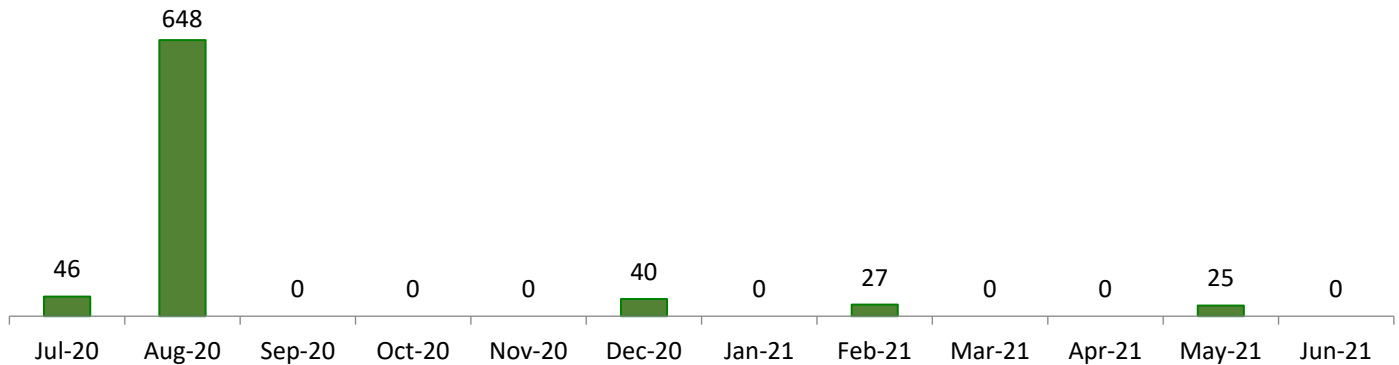
*LISEP began accepting applications on July 1, 2018 and have an incentive cap of \$1 million per year, for up to six years, as designated in Senate Bill 145.*





# Solar PV / LISEP

## Solar PV / LISEP Incentives Capacity Installed by Month (kW)



## Solar PV / LISEP Incentives Paid Since July 1, 2010

Spending Toward \$295,270,000 Cap		
	Incentives Paid	Completed kW
Total	\$242,971,352	313,838

## Average Solar PV / LISEP Incentives Installation Cost Per Watt AC-CEC

Cost Per Watt		
Year	UFI/EPBB	PBI
2020	\$4.46	\$2.90
2021	\$4.22	\$0.00

*Solar PV / LISEP Incentives Capacity Installed by Month (kW) chart represents interconnected incentivized capacity, which are applications that have received permission to operate, by the month they were interconnected. The Solar Incentives Applications Completed Capacity by Month (kW) chart, which represented total interconnected incentivized capacity only after administrative tasks have been completed to close out an application, has been removed.*





# Solar Thermal Heating (Northern Nevada Gas Customers)

## Program Update

In June, the solar thermal heating incentives program received zero applications and there were no applications closed out.

June			
	Active Applications	Incentives Reserved	Incentives Paid
	North	North	North
Residential/Small Business	0	\$0	\$0
Large Commercial/Industrial	0	\$0	\$0
Low-Income/Nonprofit	0	\$0	\$0
School	0	\$0	\$0
Public Entity	0	\$0	\$0
Public and Other	0	\$0	\$0
Small Commercial	0	\$0	\$0
<b>Total</b>	<b>0</b>	<b>\$0</b>	<b>\$0</b>

Calendar Year to Date		
	Incentives Paid	Completed Applications
	North	North
Residential/Small Business	\$0	0
Large Commercial/Industrial	\$0	0
Low-Income/Nonprofit	\$0	0
School	\$0	0
Public Entity	\$0	0
Public and Other	\$0	0
Small Commercial	\$0	0
<b>Total</b>	<b>\$0</b>	<b>0</b>

Inception (2004) to Present		
	Incentives Paid	Completed Applications
	North	North
Residential/Small Business	\$26,907	13
Large Commercial/Industrial	\$0	0
Low-Income/Nonprofit	\$0	0
School	\$8,949	1
Public Entity	\$0	0
Public and Other	\$99,747	5
Small Commercial	\$0	0
<b>Total</b>	<b>\$135,603</b>	<b>19</b>





# Wind

## Program Update

The wind incentives program is fully subscribed and all incentive applications are closed out.

Inception (2004) to Present						
	Incentives Paid		Completed Capacity (kW)		Completed Applications	
	North	South	North	South	North	South
Residential/Small Business	\$1,403,080	\$49,183	574	23	54	6
Large Commercial/Industrial	\$0	\$0	0	0	0	0
Low-Income/Nonprofit	\$0	\$0	0	0	0	0
School	\$1,369,200	\$7,800	365	2	4	1
Public Entity	\$0	\$0	0	0	0	0
Public and Other	\$295,200	\$0	85	0	10	0
Small Commercial	\$0	\$0	0	0	0	0
Agriculture	\$23,121,745	\$0	9,069	0	91	0
<b>Total</b>	<b>\$26,189,225</b>	<b>\$56,983</b>	<b>10,093</b>	<b>25</b>	<b>159</b>	<b>7</b>

# Hydro

## Program Update

The hydro incentives program is fully subscribed and all incentive applications are closed out.

Inception (2004) to Present						
	Incentives Paid		Completed Capacity (kW)		Completed Applications	
	Net Metered	Non-Net Metered	Net Metered	Non-Net Metered	Net Metered	Non-Net Metered
Residential/Small Business	\$0	\$0	0	0	0	0
Large Commercial/Industrial	\$0	\$0	0	0	0	0
Low-Income/Nonprofit	\$0	\$0	0	0	0	0
School	\$0	\$0	0	0	0	0
Public Entity	\$0	\$0	0	0	0	0
Public and Other	\$0	\$0	0	0	0	0
Small Commercial	\$0	\$0	0	0	0	0
Agriculture	\$395,000	\$1,702,500	158	1,187	3	4
<b>Total</b>	<b>\$395,000</b>	<b>\$1,702,500</b>	<b>158</b>	<b>1,187</b>	<b>3</b>	<b>4</b>

## Wind and Hydro Incentives Paid Since July 1, 2010

Spending Toward \$295,270,000 Cap	
	Incentives Paid
Wind	\$25,928,108
Hydro	\$2,097,500
<b>Total</b>	<b>\$28,025,608</b>





# Energy Storage

## Program Update

In June, the energy storage incentives program received 66 applications and 31 applications were closed out.

June				
	Incentives Paid		Completed Applications	
	North	South	North	South
Residential/Small Business	\$8,130	\$47,394	6	25
Large Commercial/Industrial	\$0	\$0	0	0
Low-Income/Nonprofit	\$0	\$0	0	0
School	\$0	\$0	0	0
Public Entity	\$0	\$0	0	0
Public and Other	\$0	\$0	0	0
Small Commercial	\$0	\$0	0	0
<b>Total</b>	<b>\$8,130</b>	<b>\$47,394</b>	<b>6</b>	<b>25</b>

Calendar Year to Date				
	Incentives Paid		Completed Applications	
	North	South	North	South
Residential/Small Business	\$65,012	\$225,309	40	112
Large Commercial/Industrial	\$0	\$0	0	0
Low-Income/Nonprofit	\$0	\$0	0	0
School	\$0	\$0	0	0
Public Entity	\$0	\$0	0	0
Public and Other	\$0	\$0	0	0
Small Commercial	\$0	\$0	0	0
<b>Total</b>	<b>\$65,012</b>	<b>\$225,309</b>	<b>40</b>	<b>112</b>

Inception (2018) to Present				
	Incentives Paid		Completed Applications	
	North	South	North	South
Residential/Small Business	\$533,251	\$789,788	232	348
Large Commercial/Industrial	\$0	\$0	0	0
Low-Income/Nonprofit	\$0	\$0	0	0
School	\$0	\$0	0	0
Public Entity	\$0	\$300,000	0	1
Public and Other	\$0	\$0	0	0
Small Commercial	\$0	\$0	0	0
<b>Total</b>	<b>\$533,251</b>	<b>\$1,089,788</b>	<b>232</b>	<b>349</b>







# Electric Vehicle Charging Station

## Program Update

In June, the electric vehicle charge station incentives program received 17 applications and there was one application closed out.

June				
	Incentives Paid		Completed Applications	
	North	South	North	South
Workplace	\$0	\$0	0	0
Fleet	\$0	\$0	0	0
Multi-Family	\$0	\$20,000	0	1
Public Charging	\$0	\$0	0	0
Lower-Income Multi-Family	\$0	\$0	0	0
Governmental	\$0	\$0	0	0
Custom Grant	\$0	\$0	0	0
EV School Bus	\$0	\$0	0	0
Nevada Electric Highway	\$0	\$0	0	0
<b>Total</b>	<b>\$0</b>	<b>\$20,000</b>	<b>0</b>	<b>1</b>

Calendar Year to Date				
	Incentives Paid		Completed Applications	
	North	South	North	South
Workplace	\$6,000	\$0	1	0
Fleet	\$0	\$0	0	0
Multi-Family	\$0	\$164,800	0	4
Public Charging	\$11,939	\$0	1	0
Lower-Income Multi-Family	\$0	\$0	0	0
Governmental	\$0	\$0	0	0
Custom Grant	\$0	\$0	0	0
EV School Bus	\$0	\$0	0	0
Nevada Electric Highway	\$255,604	\$22,300	0	0
<b>Total</b>	<b>\$273,542</b>	<b>\$187,100</b>	<b>2</b>	<b>4</b>

Inception (2018) to Present				
	Incentives Paid		Completed Applications	
	North	South	North	South
Workplace	\$87,131	\$379,728	5	25
Fleet	\$75,000	\$0	1	0
Multi-Family	\$30,000	\$182,800	3	6
Public Charging	\$11,939	\$62,000	1	2
Lower-Income Multi-Family	\$0	\$0	0	0
Governmental	\$0	\$0	0	0
Custom Grant	\$171,834	\$0	1	0
EV School Bus	\$0	\$0	0	0
Nevada Electric Highway	\$1,319,637	\$180,115	4	2
<b>Total</b>	<b>\$1,695,540</b>	<b>\$804,643</b>	<b>15</b>	<b>35</b>





# Clean Energy Programs Summary

## Clean Energy Programs Incentives Summary

All Program Spending Since July 1, 2010 Toward \$295,270,000 Cap				
	Incentives	Incentives	Incentives	Incentives
	Paid	Reserved	Available	Total
Solar PV	\$241,587,191	\$783,568	\$0	\$242,370,759
LISEP	\$1,384,161	\$1,483,359	\$1,292,488	\$4,160,008
Wind	\$25,928,108	\$0	\$0	\$25,928,108
Hydro	\$2,097,500	\$0	\$0	\$2,097,500
Energy Storage	\$1,623,039	\$477,086	\$3,613,500	\$5,713,625
Electric Vehicle	\$2,500,183	\$3,866,266	\$8,633,551	\$15,000,000
<b>Total</b>	<b>\$275,120,182</b>	<b>\$6,610,279</b>	<b>\$13,539,539</b>	<b>\$295,270,000</b>

## Solar PV and Energy Storage Incentives Attrition Since July 1, 2019

Solar PV and Energy Storage Incentives Attrition Since July 1, 2019			
	Solar PV	Energy Storage	Total
<b>Total</b>	<b>\$2,017,114</b>	<b>\$142,894</b>	<b>\$2,160,008</b>

## Renewable Energy Generating Systems Capacity Completed Since July 1, 2010 and Reserved

Solar PV, LISEP, Wind, and Hydro Programs Capacity Summary			
	Capacity (kW)	Capacity (kW)	Capacity (kW)
	Completed	Reserved	Total
Solar PV	312,910	67	312,977
LISEP	929	1,076	2,005
Wind	10,003	0	10,003
Hydro	1,346	0	1,346
<b>Total</b>	<b>325,188</b>	<b>1,143</b>	<b>326,331</b>

The following definitions apply to all Program Summary Monthly Detail pages:

**Incentives Paid** program dollars are from completed incentive applications plus performance-based incentives (PBI) paid to date.

**Incentives Reserved** are the maximum approved program dollars reserved for applications that have received a Reservation Notice and have not been closed out, plus the balance between approved PBI program dollars reserved and paid to date.

**Incentives Available** program dollars have not yet been reserved or paid out. This also includes Solar PV program dollars from applications, which were submitted but not reserved prior to the program becoming fully subscribed.

**Newly Available** program dollars are the difference between the maximum reserved incentive amount and the actual incentive amount paid from completed applications or ineligible applications.

**Incentives Attrition** program dollars are previously reserved funds, from approved applications that received a Reservation Notice, until the application progressed into a Cancelled, Withdrawn, or Forfeited status, as defined by NRS code 701B.255.

All Program Review pages detail program spending to date toward \$295,270,000 incentive cap.



# Solar PV

## Program Summary Monthly Detail

In June, \$724 was paid out and \$0 was reserved. There was \$1,866 of attrition made available to LISEP. There was \$0 of newly available funds made available to the energy storage incentives program.

Beginning June Balance					
	Incentives Paid		Incentives Reserved		Incentives Available
	North	South	North	South	
Residential/Small Business	\$6,231,617	\$52,546,331	\$0	\$59,443	
Large Commercial/Industrial	\$732,396	\$2,322,576	\$144,383	\$100,950	
Low-Income/Nonprofit	\$2,333,552	\$3,727,323	\$3,195	\$176,843	
School	\$57,398,167	\$48,656,809	\$0	\$0	
Public Entity	\$251,291	\$227,071	\$0	\$229,534	
Public and Other	\$32,799,171	\$34,009,823	\$0	\$0	
Small Commercial	\$36,488	\$313,852	\$22,059	\$49,751	
<b>Total</b>	<b>\$99,782,682</b>	<b>\$141,803,785</b>	<b>\$169,637</b>	<b>\$616,521</b>	<b>\$0</b>

June Activity								
	Incentives Paid		Incentives Reserved		Attrition		Newly Available	
	North	South	North	South	North	South	North	South
Residential/Small Business	\$0	\$189	\$0	\$0	\$0	\$1,866	\$0	\$0
Large Commercial/Industrial	\$535	\$0	\$0	\$0	\$0	\$0	\$0	\$0
Low-Income/Nonprofit	\$0	\$0	\$0	\$0	\$0	\$0	\$0	\$0
School	\$0	\$0	\$0	\$0	\$0	\$0	\$0	\$0
Public Entity	\$0	\$0	\$0	\$0	\$0	\$0	\$0	\$0
Public and Other	\$0	\$0	\$0	\$0	\$0	\$0	\$0	\$0
Small Commercial	\$0	\$0	\$0	\$0	\$0	\$0	\$0	\$0
<b>Total</b>	<b>\$535</b>	<b>\$189</b>	<b>\$0</b>	<b>\$0</b>	<b>\$0</b>	<b>\$1,866</b>	<b>\$0</b>	<b>\$0</b>

Ending June Balance					
	Incentives Paid		Incentives Reserved		Incentives Available
	North	South	North	South	
Residential/Small Business	\$6,231,617	\$52,546,520	\$0	\$57,388	
Large Commercial/Industrial	\$732,931	\$2,322,576	\$143,848	\$100,950	
Low-Income/Nonprofit	\$2,333,552	\$3,727,323	\$3,195	\$176,843	
School	\$57,398,167	\$48,656,809	\$0	\$0	
Public Entity	\$251,291	\$227,071	\$0	\$229,534	
Public and Other	\$32,799,171	\$34,009,823	\$0	\$0	
Small Commercial	\$36,488	\$313,852	\$22,059	\$49,751	
<b>Total</b>	<b>\$99,783,217</b>	<b>\$141,803,974</b>	<b>\$169,102</b>	<b>\$614,466</b>	<b>\$0</b>

**Solar PV Attrition** program dollars have been reallocated to LISEP, as designated in the Docket No. 19-02001 Final Order.

**Solar PV Newly Available** program dollars have been made available to the energy storage incentives program.





# Low Income Solar Energy Program (LISEP)

## Program Summary Monthly Detail

In June, \$42,188 was paid and \$0 was reserved. There was \$0 of attrition and \$12,288 of newly available funds that became available funds for LISEP.

Beginning June Balance					
	Incentives Paid		Incentives Reserved		Incentives Available
	North	South	North	South	
Low Income Solar Program	\$333,426	\$1,008,547	\$688,403	\$849,432	\$1,263,779

June Activity								
	Incentives Paid		Incentives Reserved		Attrition		Newly Available	
	North	South	North	South	North	South	North	South
Low Income Solar Program	\$42,188	\$0	\$0	\$0	\$0	\$0	\$12,288	\$0

Ending June Balance					
	Incentives Paid		Incentives Reserved		Incentives Available
	North	South	North	South	
Low Income Solar Program					Solar PV June Attrition
					\$1,866
					Energy Storage June Attrition
					\$14,555
Low Income Solar Program					LISEP June Attrition
					\$0
Low Income Solar Program	\$375,614	\$1,008,547	\$633,927	\$849,432	\$1,292,488

*LISEP* disbursement is capped at \$1,000,000 per year, as designated in Senate Bill 145.

*LISEP Attrition and Newly Available* program dollars become available funds within LISEP.





# Energy Storage

## Program Summary Monthly Detail

In June, \$55,524 was paid out and \$76,131 was reserved. There was \$14,555 of attrition made available to LISEP. There was \$3,000 of newly available funds that became available funds for the energy storage incentives program.

Beginning June Balance					
	Incentives Paid		Incentives Reserved		Incentives Available
	North	South	North	South	
Residential/Small Business	\$525,121	\$742,394	\$109,053	\$359,450	
Large Commercial/Industrial	\$0	\$0	\$0	\$0	
Low-Income/Nonprofit	\$0	\$0	\$0	\$0	
School	\$0	\$0	\$0	\$0	
Public Entity	\$0	\$300,000	\$0	\$0	
Public and Other	\$0	\$0	\$0	\$0	
Small Commercial	\$0	\$0	\$0	\$4,320	
<b>Total</b>	<b>\$525,121</b>	<b>\$1,042,394</b>	<b>\$109,053</b>	<b>\$363,770</b>	<b>\$3,687,842</b>

June Activity								
	Incentives Paid		Incentives Reserved		Attrition		Newly Available	
	North	South	North	South	North	South	North	South
Residential/Small Business	\$8,130	\$47,394	\$19,965	\$56,166	\$6,020	\$8,535	\$3,000	\$0
Large Commercial/Industrial	\$0	\$0	\$0	\$0	\$0	\$0	\$0	\$0
Low-Income/Nonprofit	\$0	\$0	\$0	\$0	\$0	\$0	\$0	\$0
School	\$0	\$0	\$0	\$0	\$0	\$0	\$0	\$0
Public Entity	\$0	\$0	\$0	\$0	\$0	\$0	\$0	\$0
Public and Other	\$0	\$0	\$0	\$0	\$0	\$0	\$0	\$0
Small Commercial	\$0	\$0	\$0	\$0	\$0	\$0	\$0	\$0
<b>Total</b>	<b>\$8,130</b>	<b>\$47,394</b>	<b>\$19,965</b>	<b>\$56,166</b>	<b>\$6,020</b>	<b>\$8,535</b>	<b>\$3,000</b>	<b>\$0</b>

Ending June Balance					
	Incentives Paid		Incentives Reserved		Incentives Available
	North	South	North	South	
Residential/Small Business	\$533,251	\$789,788	\$113,418	\$359,348	
Large Commercial/Industrial	\$0	\$0	\$0	\$0	
Low-Income/Nonprofit	\$0	\$0	\$0	\$0	
School	\$0	\$0	\$0	\$0	
Public Entity	\$0	\$300,000	\$0	\$0	
Public and Other	\$0	\$0	\$0	\$0	
Small Commercial	\$0	\$0	\$0	\$4,320	
<b>Total</b>	<b>\$533,251</b>	<b>\$1,089,788</b>	<b>\$113,418</b>	<b>\$363,668</b>	
					<b>Solar PV June Newly Available</b>
					\$0
					<b>Energy Storage June Newly Available</b>
					\$3,000
					<b>Total Available</b>
					<b>\$3,613,500</b>

*Energy Storage Attrition program dollars have been reallocated to LISEP, as designated in the Docket No. 19-02001 Final Order.  
Energy Storage Newly Available program dollars become available funds within the energy storage incentives program.*





# Electric Vehicle Charging Station

## Program Summary Monthly Detail

In June, \$20,000 was paid out and \$316,977 was reserved. There was \$24,000 of attrition and \$0 of newly available funds that became available funds for the electric vehicle charging station incentives program.

Beginning June Balance					
	Incentives Paid		Incentives Reserved		Incentives Available
	North	South	North	South	
Workplace	\$87,131	\$379,728	\$42,000	\$46,479	
Fleet	\$75,000	\$0	\$0	\$43,536	
Multi-Family	\$30,000	\$162,800	\$126,879	\$210,000	
Public Charging	\$11,939	\$62,000	\$268,000	\$216,000	
Lower-Income Multi-Family	\$0	\$0	\$0	\$0	
Governmental	\$0	\$0	\$67,642	\$30,000	
Custom Grant	\$171,834	\$0	\$74,648	\$1,301,831	
EV School Bus	\$0	\$0	\$0	\$0	
Nevada Electric Highway	\$1,319,637	\$180,115	\$859,830	\$306,445	
<b>Total</b>	<b>\$1,695,540</b>	<b>\$784,643</b>	<b>\$1,438,999</b>	<b>\$2,154,291</b>	<b>\$8,926,528</b>

June Activity								
	Incentives Paid		Incentives Reserved		Attrition		Newly Available	
	North	South	North	South	North	South	North	South
Workplace	\$0	\$0	\$0	\$56,000	\$0	\$24,000	\$0	\$0
Fleet	\$0	\$0	\$93,732	\$68,313	\$0	\$0	\$0	\$0
Multi-Family	\$0	\$20,000	\$0	\$98,932	\$0	\$0	\$0	\$0
Public Charging	\$0	\$0	\$0	\$0	\$0	\$0	\$0	\$0
Lower-Income Multi-Family	\$0	\$0	\$0	\$0	\$0	\$0	\$0	\$0
Governmental	\$0	\$0	\$0	\$0	\$0	\$0	\$0	\$0
Custom Grant	\$0	\$0	\$0	\$0	\$0	\$0	\$0	\$0
EV School Bus	\$0	\$0	\$0	\$0	\$0	\$0	\$0	\$0
Nevada Electric Highway	\$0	\$0	\$0	\$0	\$0	\$0	\$0	\$0
<b>Total</b>	<b>\$0</b>	<b>\$20,000</b>	<b>\$93,732</b>	<b>\$223,245</b>	<b>\$0</b>	<b>\$24,000</b>	<b>\$0</b>	<b>\$0</b>

Ending June Balance					
	Incentives Paid		Incentives Reserved		Incentives Available
	North	South	North	South	
Workplace	\$87,131	\$379,728	\$42,000	\$78,479	
Fleet	\$75,000	\$0	\$93,732	\$111,849	
Multi-Family	\$30,000	\$182,800	\$126,879	\$288,932	
Public Charging	\$11,939	\$62,000	\$268,000	\$216,000	
Lower-Income Multi-Family	\$0	\$0	\$0	\$0	
Governmental	\$0	\$0	\$67,642	\$30,000	
Custom Grant	\$171,834	\$0	\$74,648	\$1,301,831	
EV School Bus	\$0	\$0	\$0	\$0	
Nevada Electric Highway	\$1,319,637	\$180,115	\$859,830	\$306,445	
<b>Total</b>	<b>\$1,695,540</b>	<b>\$804,643</b>	<b>\$1,532,731</b>	<b>\$2,333,535</b>	<b>\$8,633,551</b>





# Legislation, Regulation, and Compliance

A Lower-Income Solar Program project was completed at an apartment complex in Reno. The 25.052-kilowatt photovoltaic project received an incentive from the Governor's Office of Energy.

The table below shows the status of all the Nevada Electric Highway Sites:

Site # on GOE Map	Highway	Site Location	Status
1	I-15	Jean	Completed
2	I-15	I-15 / U.S. 93 Jct	Construction
6	I-80	I-80 / U.S. 95 Jct	Site Selection
17	U.S. 95	Schurz	Completed
18a	U.S. 95	Luning	Completed
19	U.S. 95	Coaldale	Removed
20	U.S. 95	Goldfield	Completed
7	I-80	Lovelock	Removed
8	I-80	Rye Patch	Procurement
10	I-80	Valmy	Removed
24	U.S. 50	Silver Springs	Closeout
25	U.S. 50	Middlegate	Closeout
26	U.S. 50	Cold Springs	Completed
27	U.S. 50	Austin	Completed

## Monthly Report Modifications

Continual data reconciliation of the application portal data and decimal rounding will result in marginal variances between reports and any significant variances will be explained.

# Workshops, Meetings, and Events

The clean energy programs staff held the following event(s) where they handed out brochures and/or answered questions from the attendees:

- There were no workshops, meetings, or events in June.





# Contact Us

## Website

<https://www.nvenergy.com/cleanenergy>

## Email

[cleanenergy@nvenergy.com](mailto:cleanenergy@nvenergy.com)

## Toll Free

(866) 786-3823

## Mailing Address

NV Energy  
Attn: Clean Energy Programs  
6100 Neil Road  
M/S 2A35  
Reno, NV 89511

