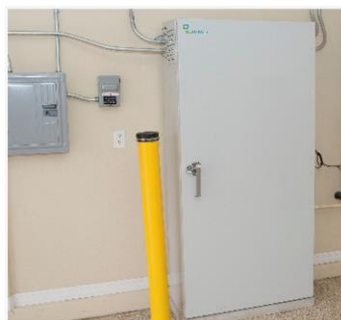


Clean Energy Programs

MONTHLY REPORT



OCTOBER 2021





Contents

Clean Energy Programs Update	3
Solar PV	3
Low Income Solar Energy Program (LISEP)	4
Solar Thermal Heating (Northern Nevada Gas Customers).....	6
Wind.....	7
Hydro.....	7
Energy Storage	8
Electric Vehicle Charging Station	9
Clean Energy Programs Summary.....	10
Solar PV	11
Low Income Solar Energy Program (LISEP)	12
Energy Storage	13
Electric Vehicle Charging Station	14
Legislation, Regulation, and Compliance.....	15
Workshops, Meetings, and Events	16
Contact Us.....	16





Clean Energy Programs Update

NV Energy is in process of beginning its final preparation to fully expend the required \$295,270,000 that was directed to renewable energy, energy storage, and electric vehicle infrastructure development programs. NV Energy has been tracking these programs since July 1, 2010. With NV Energy's next Annual Clean Energy Plan report due to the Commission on or before February 1, 2022; the Companies anticipate that less than three percent of budget will remain. Therefore, NV Energy is in the process of updating its actual expenditure reporting to align with its general ledger and deferred energy account adjustment filings as opposed to reporting from its PowerClerk application tracking system. By using the general ledger, NV Energy can more discretely track actual expenditures. PowerClerk, is an application tracking system and does not follow general accepted accounting principles. Over the next few months, NV Energy will provide minor adjustments and updates to previous program year actual expenditures to fully align with NV Energy's general ledger.

Solar PV

Program Update

The solar incentives program is fully subscribed. In October, zero applications were closed out.

October						
	Incentives Paid		Completed kW		Completed Applications	
	North	South	North	South	North	South
Residential/Small Business	\$0	\$0	0	0	0	0
Large Commercial/Industrial	\$0	\$0	0	0	0	0
Low-Income/Nonprofit	\$0	\$0	0	0	0	0
School	\$0	\$0	0	0	0	0
Public Entity	\$0	\$0	0	0	0	0
Public and Other	\$0	\$0	0	0	0	0
Small Commercial	\$0	\$0	0	0	0	0
Total	\$0	\$0	0	0	0	0

Calendar Year to Date						
	Incentives Paid		Completed kW		Completed Applications	
	North	South	North	South	North	South
Residential/Small Business	\$842	\$46,993	5	244	1	38
Large Commercial/Industrial	\$56,063	\$107,050	0	0	0	0
Low-Income/Nonprofit	\$1,144	\$91,180	0	0	0	0
School	\$0	\$0	0	0	0	0
Public Entity	\$2,784	\$35,761	0	0	0	0
Public and Other	\$0	\$0	0	0	0	0
Small Commercial	\$4,038	\$23,936	0	0	0	0
Total	\$64,871	\$304,920	5	244	1	38

Inception (2004) to Present						
	Incentives Paid		Completed kW		Completed Applications	
	North	South	North	South	North	South
Residential/Small Business	\$9,680,681	\$56,352,707	15,632	237,156	2,945	36,121
Large Commercial/Industrial	\$754,111	\$2,337,171	3,651	7,679	14	21
Low-Income/Nonprofit	\$1,890,988	\$2,887,811	605	2,332	15	78
School	\$60,799,373	\$49,297,179	14,458	13,019	133	171
Public Entity	\$251,291	\$243,296	332	938	4	5
Public and Other	\$37,963,190	\$34,911,442	9,034	9,466	192	160
Small Commercial	\$38,626	\$323,528	410	2,133	18	39
Total	\$111,378,260	\$146,353,134	44,122	272,722	3,321	36,595

Inception to Present North School is \$33,337 lower due to:

- NVE-32867/LISEPP-04 was reduced by \$9,957 to match actual GL payments.
- NVE-32866/LISEPP-02 was reduced by \$11,277 to match actual GL payments.
- NVE-32865/LISEPP-01 was reduced by \$12,103 to match actual GL payments.

Inception to Present South Residential is \$1,708 higher due to:

- NVE-29248, completed in 2017, was increased by \$1,056 to match actual GL payments.
- NVE-29393, completed in 2017, was increased by \$652 to match actual GL payments.





Low Income Solar Energy Program (LISEP)

Program Update

In October, LISEP received zero applications and zero applications were closed out.

October						
	Incentives Paid		Completed Capacity (kW)		Completed Applications	
	North	South	North	South	North	South
Low Income Solar Energy Program	\$0	\$0	0	0	0	0

Calendar Year to Date						
	Incentives Paid		Completed Capacity (kW)		Completed Applications	
	North	South	North	South	North	South
Low Income Solar Energy Program	\$80,307	\$71,685	52	40	2	1

Inception (2018) to Present						
	Incentives Paid		Completed Capacity (kW)		Completed Applications	
	North	South	North	South	North	South
Low Income Solar Energy Program	\$818,380	\$1,862,878	441	1,201	39	20

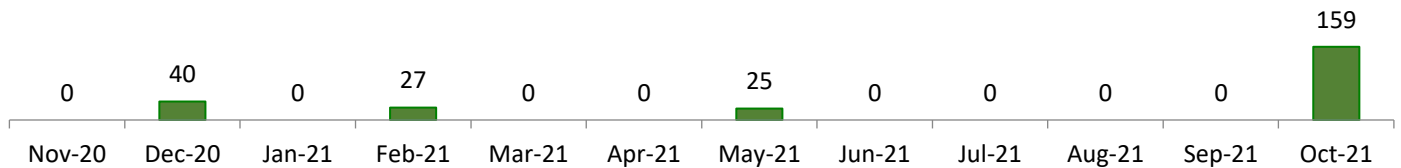
LISEP began accepting applications on July 1, 2018 and have an incentive cap of \$1 million per year, for up to six years, as designated in Senate Bill 145.





Solar PV / LISEP

Solar PV / LISEP Incentives Capacity Installed by Month (kW)



Solar PV / LISEP Incentives Paid Since July 1, 2010

Spending Toward \$295,270,000 Cap		
	Incentives Paid	Completed kW
Total	\$243,026,040	313,849

Average Solar PV / LISEP Incentives Installation Cost Per Watt AC-CEC

Cost Per Watt		
Year	UFI/EPBB	PBI
2020	\$4.46	\$2.90
2021	\$4.24	\$0.00

Solar PV / LISEP Incentives Capacity Installed by Month (kW) chart represents interconnected incentivized capacity, which are applications that have received permission to operate, by the month they were interconnected. The **Solar Incentives Applications Completed Capacity by Month (kW)** chart, which represented total interconnected incentivized capacity only after administrative tasks have been completed to close out an application, has been removed.





Solar Thermal Heating (Northern Nevada Gas Customers)

Program Update

In October, the solar thermal heating incentives program received zero applications and zero applications were closed out.

October			
	Active Applications	Incentives Reserved	Incentives Paid
	North	North	North
Residential/Small Business	0	\$0	\$0
Large Commercial/Industrial	0	\$0	\$0
Low-Income/Nonprofit	0	\$0	\$0
School	0	\$0	\$0
Public Entity	0	\$0	\$0
Public and Other	0	\$0	\$0
Small Commercial	0	\$0	\$0
Total	0	\$0	\$0

Calendar Year to Date		
	Incentives Paid	Completed Applications
	North	North
Residential/Small Business	\$0	0
Large Commercial/Industrial	\$0	0
Low-Income/Nonprofit	\$0	0
School	\$0	0
Public Entity	\$0	0
Public and Other	\$0	0
Small Commercial	\$0	0
Total	\$0	0

Inception (2004) to Present		
	Incentives Paid	Completed Applications
	North	North
Residential/Small Business	\$26,907	13
Large Commercial/Industrial	\$0	0
Low-Income/Nonprofit	\$0	0
School	\$8,949	1
Public Entity	\$0	0
Public and Other	\$99,747	5
Small Commercial	\$0	0
Total	\$135,603	19





Wind

Program Update

The wind incentives program is fully subscribed and all incentive applications are closed out.

Inception (2004) to Present						
	Incentives Paid		Completed Capacity (kW)		Completed Applications	
	North	South	North	South	North	South
Residential/Small Business	\$1,403,680	\$49,183	574	23	54	6
Large Commercial/Industrial	\$0	\$0	0	0	0	0
Low-Income/Nonprofit	\$0	\$0	0	0	0	0
School	\$1,369,200	\$7,800	365	2	4	1
Public Entity	\$0	\$0	0	0	0	0
Public and Other	\$295,200	\$0	85	0	10	0
Small Commercial	\$0	\$0	0	0	0	0
Agriculture	\$23,121,745	\$0	9,069	0	91	0
Total	\$26,189,825	\$56,983	10,093	25	159	7

Hydro

Program Update

The hydro incentives program is fully subscribed and all incentive applications are closed out.

Inception (2004) to Present						
	Incentives Paid		Completed Capacity (kW)		Completed Applications	
	Net Metered	Non-Net Metered	Net Metered	Non-Net Metered	Net Metered	Non-Net Metered
Residential/Small Business	\$0	\$0	0	0	0	0
Large Commercial/Industrial	\$0	\$0	0	0	0	0
Low-Income/Nonprofit	\$0	\$0	0	0	0	0
School	\$0	\$0	0	0	0	0
Public Entity	\$0	\$0	0	0	0	0
Public and Other	\$0	\$0	0	0	0	0
Small Commercial	\$0	\$0	0	0	0	0
Agriculture	\$395,000	\$1,702,500	158	1,187	3	4
Total	\$395,000	\$1,702,500	158	1,187	3	4

Wind and Hydro Incentives Paid Since July 1, 2010

Spending Toward \$295,270,000 Cap	
	Incentives Paid
Wind	\$25,946,608
Hydro	\$2,097,500
Total	\$28,044,108

Incentives Paid North Residential and Total is increased by \$600 due to: NVE-103741 for \$600, to match actual GL payments.

Incentives Paid for Wind increased \$18,500, to match actual GL payments.

NVE-103740 for \$1,200 residential, to match actual GL payments.

NVE-103741 for \$600 residential, to match actual GL payments.

NVE-103742 for \$5,000 Public and Other, to match actual GL payments.

NVE-103743 for \$1,300 residential, to match actual GL payments.

NVE-103744 for \$1,300 residential, to match actual GL payments.

NVE-103745 for \$1,300 small business, to match actual GL payments.

NVE-103746 for \$7,800 residential, to match actual GL payments.





Energy Storage

Program Update

In October, the energy storage incentives program received 58 applications and nine applications were closed out.

October				
	Incentives Paid		Completed Applications	
	North	South	North	South
Residential/Small Business	\$1,500	\$15,347	1	8
Large Commercial/Industrial	\$0	\$0	0	0
Low-Income/Nonprofit	\$0	\$0	0	0
School	\$0	\$0	0	0
Public Entity	\$0	\$0	0	0
Public and Other	\$0	\$0	0	0
Small Commercial	\$0	\$0	0	0
Total	\$1,500	\$15,347	1	8

Calendar Year to Date				
	Incentives Paid		Completed Applications	
	North	South	North	South
Residential/Small Business	\$99,539	\$354,219	61	175
Large Commercial/Industrial	\$0	\$0	0	0
Low-Income/Nonprofit	\$0	\$0	0	0
School	\$0	\$0	0	0
Public Entity	\$0	\$0	0	0
Public and Other	\$0	\$0	0	0
Small Commercial	\$0	\$4,320	0	1
Total	\$99,539	\$358,539	61	176

Inception (2018) to Present				
	Incentives Paid		Completed Applications	
	North	South	North	South
Residential/Small Business	\$567,778	\$918,698	253	411
Large Commercial/Industrial	\$0	\$0	0	0
Low-Income/Nonprofit	\$0	\$0	0	0
School	\$0	\$0	0	0
Public Entity	\$0	\$300,000	0	1
Public and Other	\$0	\$0	0	0
Small Commercial	\$0	\$4,320	0	1
Total	\$567,778	\$1,223,018	253	413





Electric Vehicle Charging Station

Program Update

In October, the electric vehicle charging station incentives program received 18 applications and one application was closed out.

October				
	Incentives Paid		Completed Applications	
	North	South	North	South
Workplace	\$0	\$0	0	0
Fleet	\$0	\$0	0	0
Multi-Family	\$0	\$20,000	0	1
Public Charging	\$0	\$0	0	0
Lower-Income Multi-Family	\$0	\$0	0	0
Governmental	\$0	\$0	0	0
Residential Single-Family	\$0	\$0	0	0
Custom Grant	\$0	\$0	0	0
EV School Bus	\$0	\$0	0	0
Nevada Electric Highway	\$13,934	\$0	0	0
Total	\$13,934	\$20,000	0	1

Calendar Year to Date				
	Incentives Paid		Completed Applications	
	North	South	North	South
Workplace	\$6,000	\$0	1	0
Fleet	\$0	\$0	0	0
Multi-Family	\$0	\$184,800	0	5
Public Charging	\$11,939	\$12,000	1	1
Lower-Income Multi-Family	\$0	\$0	0	0
Governmental	\$0	\$0	0	0
Residential Single-Family	\$0	\$0	0	0
Custom Grant	\$74,648	\$809,081	1	1
EV School Bus	\$0	\$0	0	0
Nevada Electric Highway	\$768,752	\$22,300	0	0
Total	\$861,339	\$1,028,181	3	7

Inception (2018) to Present				
	Incentives Paid		Completed Applications	
	North	South	North	South
Workplace	\$87,131	\$379,728	5	25
Fleet	\$75,000	\$0	1	0
Multi-Family	\$30,000	\$202,800	3	7
Public Charging	\$11,939	\$74,000	1	3
Lower-Income Multi-Family	\$0	\$0	0	0
Governmental	\$0	\$0	0	0
Residential Single-Family	\$0	\$0	0	0
Custom Grant	\$246,482	\$809,081	2	1
EV School Bus	\$0	\$0	0	0
Nevada Electric Highway	\$1,818,527	\$180,115	4	2
Total	\$2,269,079	\$1,645,724	16	38

Calendar Year to Present North Nevada Electric Highway is \$1,662 higher due to: EV-00052 had a payment increase in 2021 by \$1,662, GOE expended funds and is unable to reimburse this portion this amount is paid from program funds.

Inception to Present North Nevada Electric Highway is \$2,725 higher due to: EV-00052 had payment increases by \$2,725, GOE expended funds and is unable to reimburse this portion this amount is paid from program funds.





Clean Energy Programs Summary

Clean Energy Programs Incentives Summary

All Program Spending Since July 1, 2010 Toward \$295,270,000 Cap				
	Incentives	Incentives	Incentives	Incentives
	Paid	Reserved	Available	Total
Solar PV	\$240,344,782	\$680,652	\$0	\$241,025,434
LISEP	\$2,681,258	\$1,834,265	\$980,814	\$5,496,337
Wind	\$25,946,608	\$0	\$0	\$25,946,608
Hydro	\$2,097,500	\$0	\$0	\$2,097,500
Energy Storage	\$1,790,796	\$718,989	\$3,194,337	\$5,704,122
Electric Vehicle	\$3,914,803	\$5,708,088	\$5,377,109	\$15,000,000
Total	\$276,775,747	\$8,941,994	\$9,552,259	\$295,270,000

Solar PV and Energy Storage Incentives Attrition Since July 1, 2019

Solar PV and Energy Storage Incentives Attrition Since July 1, 2019			
	Solar PV	Energy Storage	Total
Total	\$2,017,114	\$182,126	\$2,199,240

Renewable Energy Generating Systems Capacity Completed Since July 1, 2010 and Reserved

Solar PV, LISEP, Wind, and Hydro Programs Capacity Summary			
	Capacity (kW)	Capacity (kW)	Capacity (kW)
	Completed	Reserved	Total
Solar PV	312,208	59	312,267
LISEP	1,641	1,173	2,814
Wind	10,003	0	10,003
Hydro	1,346	0	1,346
Total	325,199	1,232	326,430

Solar program funds increased by \$1,708 to match actual GL payments..

Wind program funds increased by \$18,500 to match actual GL payments..

LISEPP program funds decreased by \$33,337 to match actual GL payments..

The following definitions apply to all Program Summary Monthly Detail pages:

Incentives Paid program dollars are from completed incentive applications plus performance-based incentives (PBI) paid to date.

Incentives Reserved are the maximum approved program dollars reserved for applications that have received a Reservation Notice and have not been closed out, plus the balance between approved PBI program dollars reserved and paid to date.

Incentives Available program dollars have not yet been reserved or paid out. This also includes Solar PV program dollars from applications, which were submitted but not reserved prior to the program becoming fully subscribed.

Newly Available program dollars are the difference between the maximum reserved incentive amount and the actual incentive amount paid from completed applications or ineligible applications.

Incentives Attrition program dollars are previously reserved funds, from approved applications that received a Reservation Notice, until the application progressed into a Cancelled, Withdrawn, or Forfeited status, as defined by NRS code 701B.255.

All Program Review pages detail program spending to date toward \$295,270,000 incentive cap.



Solar PV

Program Summary Monthly Detail

In October, \$0 was paid out and \$0 was reserved. There was \$0 of attrition made available to LISEP. There was \$8,438 of newly available funds made available to the energy storage incentives program.

Beginning October Balance								
	Incentives Paid		Incentives Reserved		Incentives Available			
	North	South	North	South				
Residential/Small Business	\$6,227,477	\$52,559,850	\$0	\$50,165				
Large Commercial/Industrial	\$754,111	\$2,337,171	\$122,668	\$85,500				
Low-Income/Nonprofit	\$1,890,988	\$2,887,811	\$2,993	\$162,024				
School	\$57,364,830	\$48,656,809	\$0	\$0				
Public Entity	\$251,291	\$243,296	\$0	\$213,309				
Public and Other	\$32,799,171	\$34,009,823	\$0	\$0				
Small Commercial	\$38,626	\$323,528	\$19,921	\$32,510				
Total	\$99,326,494	\$141,018,288	\$145,582	\$543,508	\$0			

October Activity								
	Incentives Paid		Incentives Reserved		Attrition		Newly Available	
	North	South	North	South	North	South	North	South
Residential/Small Business	\$0	\$0	\$0	\$0	\$0	\$0	\$0	\$0
Large Commercial/Industrial	\$0	\$0	\$0	\$0	\$0	\$0	\$8,438	\$0
Low-Income/Nonprofit	\$0	\$0	\$0	\$0	\$0	\$0	\$0	\$0
School	\$0	\$0	\$0	\$0	\$0	\$0	\$0	\$0
Public Entity	\$0	\$0	\$0	\$0	\$0	\$0	\$0	\$0
Public and Other	\$0	\$0	\$0	\$0	\$0	\$0	\$0	\$0
Small Commercial	\$0	\$0	\$0	\$0	\$0	\$0	\$0	\$0
Total	\$0	\$0	\$0	\$0	\$0	\$0	\$8,438	\$0

Ending October Balance								
	Incentives Paid		Incentives Reserved		Incentives Available			
	North	South	North	South				
Residential/Small Business	\$6,227,477	\$52,559,850	\$0	\$50,165				
Large Commercial/Industrial	\$754,111	\$2,337,171	\$114,230	\$85,500				
Low-Income/Nonprofit	\$1,890,988	\$2,887,811	\$2,993	\$162,024				
School	\$57,364,830	\$48,656,809	\$0	\$0				
Public Entity	\$251,291	\$243,296	\$0	\$213,309				
Public and Other	\$32,799,171	\$34,009,823	\$0	\$0				
Small Commercial	\$38,626	\$323,528	\$19,921	\$32,510				
Total	\$99,326,494	\$141,018,288	\$137,144	\$543,508	\$0			

Incentives Paid North School is \$33,337 lower due to:

- NVE-32867/LISEPP-04 was reduced by \$9,957 to match actual GL payments.
- NVE-32866/LISEPP-02 was reduced by \$11,277 to match actual GL payments.
- NVE-32865/LISEPP-01 was reduced by \$12,103 to match actual GL payments.

Incentives Paid South Residential is \$1,708 higher due to:

- NVE-29248, completed in 2017, was increased by \$1,056 to match actual GL payments.
- NVE-29393, completed in 2017, was increased by \$652 to match actual GL payments.





Low Income Solar Energy Program (LISEP)

Program Summary Monthly Detail

In October, \$0 was paid and \$0 was reserved. There was \$0 of attrition and \$0 of newly available funds that became available funds for LISEP.

Beginning October Balance								
	Incentives Paid		Incentives Reserved		Incentives Available			
	North	South	North	South				
Low Income Solar Program	\$818,380	\$1,862,878	\$574,827	\$1,259,438	\$968,665			
October Activity								
	Incentives Paid		Incentives Reserved		Attrition		Newly Available	
	North	South	North	South	North	South	North	South
Low Income Solar Program	\$0	\$0	\$0	\$0	\$0	\$0	\$0	\$0
Ending October Balance								
	Incentives Paid		Incentives Reserved		Incentives Available			
	North	South	North	South				
					Solar PV October Attrition \$0			
					Energy Storage October Attrition \$12,149			
					LISEP October Attrition \$0			
Low Income Solar Program	\$818,380	\$1,862,878	\$980,814	\$1,259,438	\$980,814			

LISEP disbursement is capped at \$1,000,000 per year, as designated in Senate Bill 145.

LISEP Attrition and Newly Available program dollars become available funds within LISEP.





Energy Storage

Program Summary Monthly Detail

In October, \$16,847 was paid out and \$148,996 was reserved. There was \$12,149 of attrition made available to LISEP. There was \$3,653 of newly available funds that became available funds for the energy storage incentives program.

Beginning October Balance								
	Incentives Paid		Incentives Reserved		Incentives Available			
	North	South	North	South				
Residential/Small Business	\$566,278	\$903,352	\$139,123	\$463,518				
Large Commercial/Industrial	\$0	\$0	\$0	\$0				
Low-Income/Nonprofit	\$0	\$0	\$0	\$0				
School	\$0	\$0	\$0	\$0				
Public Entity	\$0	\$300,000	\$0	\$0				
Public and Other	\$0	\$0	\$0	\$0				
Small Commercial	\$0	\$4,320	\$0	\$0				
Total	\$566,278	\$1,207,672	\$139,123	\$463,518	\$3,331,242			
October Activity								
	Incentives Paid		Incentives Reserved		Attrition		Newly Available	
	North	South	North	South	North	South	North	South
Residential/Small Business	\$1,500	\$15,347	\$45,724	\$103,272	\$1,283	\$10,866	\$3,415	\$238
Large Commercial/Industrial	\$0	\$0	\$0	\$0	\$0	\$0	\$0	\$0
Low-Income/Nonprofit	\$0	\$0	\$0	\$0	\$0	\$0	\$0	\$0
School	\$0	\$0	\$0	\$0	\$0	\$0	\$0	\$0
Public Entity	\$0	\$0	\$0	\$0	\$0	\$0	\$0	\$0
Public and Other	\$0	\$0	\$0	\$0	\$0	\$0	\$0	\$0
Small Commercial	\$0	\$0	\$0	\$0	\$0	\$0	\$0	\$0
Total	\$1,500	\$15,347	\$45,724	\$103,272	\$1,283	\$10,866	\$3,415	\$238
Ending October Balance								
	Incentives Paid		Incentives Reserved		Incentives Available			
	North	South	North	South				
Residential/Small Business	\$567,778	\$918,698	\$178,650	\$540,339				
Large Commercial/Industrial	\$0	\$0	\$0	\$0	Solar PV October Newly Available			
Low-Income/Nonprofit	\$0	\$0	\$0	\$0	\$8,438			
School	\$0	\$0	\$0	\$0	Energy Storage October Newly Available			
Public Entity	\$0	\$300,000	\$0	\$0	\$3,653			
Public and Other	\$0	\$0	\$0	\$0				
Small Commercial	\$0	\$4,320	\$0	\$0				
Total	\$567,778	\$1,223,018	\$178,650	\$540,339	Total Available \$3,194,337			

Beginning Available Balance is \$13,129 higher due to:

Solar program funds increased by \$1,708 to match actual GL payments.

Wind program funds increased by \$18,500 to match actual GL payments.

LISEPP program funds decreased by \$33,337 to match actual GL payments.

Energy Storage Attrition program dollars have been reallocated to LISEP, as designated in the Docket No. 19-02001 Final Order.

Energy Storage Newly Available program dollars become available funds within the energy storage incentives program.





Electric Vehicle Charging Station

Program Summary Monthly Detail

In October, \$33,934 was paid out and \$150,176 was reserved. There was \$18,000 of attrition and \$0 of newly available funds that became available funds for the electric vehicle charging station incentives program.

Beginning October Balance								
	Incentives Paid		Incentives Reserved		Incentives Available			
	North	South	North	South				
Workplace	\$87,131	\$379,728	\$18,000	\$132,479				
Fleet	\$75,000	\$0	\$93,732	\$201,849				
Multi-Family	\$30,000	\$182,800	\$126,879	\$549,221				
Public Charging	\$11,939	\$74,000	\$238,000	\$234,000				
Lower-Income Multi-Family	\$0	\$0	\$0	\$0				
Governmental	\$0	\$0	\$97,642	\$70,950				
Residential Single-Family	\$0	\$0	\$1,000	\$3,000				
Custom Grant	\$246,482	\$809,081	\$0	\$492,750				
EV School Bus	\$0	\$0	\$1,812,504	\$993,000				
Nevada Electric Highway	\$1,804,593	\$180,115	\$276,360	\$268,481				
Total	\$2,255,145	\$1,625,724	\$2,664,116	\$2,945,730	\$5,509,285			
October Activity								
	Incentives Paid		Incentives Reserved		Attrition		Newly Available	
	North	South	North	South	North	South	North	South
Workplace	\$0	\$0	\$0	\$0	\$12,000	\$0	\$0	\$0
Fleet	\$0	\$0	\$0	\$90,000	\$0	\$0	\$0	\$0
Multi-Family	\$0	\$20,000	\$0	\$56,176	\$6,000	\$0	\$0	\$0
Public Charging	\$0	\$0	\$0	\$0	\$0	\$0	\$0	\$0
Lower-Income Multi-Family	\$0	\$0	\$0	\$0	\$0	\$0	\$0	\$0
Governmental	\$0	\$0	\$0	\$0	\$0	\$0	\$0	\$0
Residential Single-Family	\$0	\$0	\$1,000	\$3,000	\$0	\$0	\$0	\$0
Custom Grant	\$0	\$0	\$0	\$0	\$0	\$0	\$0	\$0
EV School Bus	\$0	\$0	\$0	\$0	\$0	\$0	\$0	\$0
Nevada Electric Highway	\$13,934	\$0	\$0	\$0	\$0	\$0	\$0	\$0
Total	\$13,934	\$20,000	\$1,000	\$149,176	\$18,000	\$0	\$0	\$0
Ending October Balance								
	Incentives Paid		Incentives Reserved		Incentives Available			
	North	South	North	South				
Workplace	\$87,131	\$379,728	\$6,000	\$132,479				
Fleet	\$75,000	\$0	\$93,732	\$291,849				
Multi-Family	\$30,000	\$202,800	\$120,879	\$585,397				
Public Charging	\$11,939	\$74,000	\$238,000	\$234,000				
Lower-Income Multi-Family	\$0	\$0	\$0	\$0				
Governmental	\$0	\$0	\$97,642	\$70,950				
Residential Single-Family	\$0	\$0	\$2,000	\$6,000				
Custom Grant	\$246,482	\$809,081	\$0	\$492,750				
EV School Bus	\$0	\$0	\$1,812,504	\$993,000				
Nevada Electric Highway	\$1,818,527	\$180,115	\$262,426	\$268,481				
Total	\$2,269,079	\$1,645,724	\$2,633,182	\$3,074,906	\$5,377,109			

Beginning Incentives Paid North Nevada Electric Highway is \$1,662 higher due to EV-00052 had a payment increase by \$1,662, GOE expended funds and the costs are now covered by program funds.

Beginning Incentives Reserved North Nevada Electric Highway is \$2,725 lower due to: EV-00052 had a payment increase by \$2,725, GOE expended funds and the costs are now covered by program funds, this portion will be taken out of the reserved portion for this project.





Legislation, Regulation and Compliance

On October 9, 2021, NV Energy held an in-person electric vehicle showcase in Reno and one-hundred and twenty-five customers participated in this event. The event provided an opportunity for NV Energy's customers to explore and experience different electric vehicles. Although customers couldn't drive the electric vehicles this year due to pandemic concerns, the event was very well received. Some of the electric vehicles showcased were Tesla model 3, Tesla model S, Tesla Model Y, Tesla Model S Plaid, Audi e-tron, Nissan Leaf, Chevy Bolt, Ford Mustang Mach-E, Jaguar I-Pace, and Volvo XC40.

On October 13, 2021, NV Energy held an electric school bus virtual event, E-Bus: E is for Everyone. NV Energy's customers learned about the financial, environmental and community benefits of electric buses, their capabilities, available models and charging options and the available incentives.

On October 23, 2021, NV Energy held an in-person electric vehicle showcase at Bruce Trent park in Las Vegas and three hundred and fifty customers participated in this event. The event provided an opportunity for NV Energy's customers to explore and experience different electric vehicles. Although customers couldn't drive the electric vehicles this year due to pandemic concerns, the event was very well received. Some of the electric vehicles showcased were Tesla model 3, Tesla model S, Tesla Model Y, Mustang Mach-E, Volkswagen ID 4, and Hyundai Kona.

For the second phase of the Nevada electric highway, NV Energy completed construction of the Motel 6 site located at the Las Vegas Speedway. The equipment at this site is energized, commissioned and ready to serve customers.

The table below shows the status of all the Nevada Electric Highway Sites:

Site # on GOE Map	Highway	Site Location	Status
1	I-15	Jean	Completed
2	I-15	I-15 / U.S. 93 Jct	Completed
6	I-80	I-80 / U.S. 95 Jct	Site Selection
17	U.S. 95	Schurz	Completed
18a	U.S. 95	Luning	Completed
19	U.S. 95	Coaldale	Removed
20	U.S. 95	Goldfield	Completed
7	I-80	Lovelock	Removed
8	I-80	Rye Patch	Construction
10	I-80	Valmy	Removed
24	U.S. 50	Silver Springs	Closeout
25	U.S. 50	Middlegate	Completed
26	U.S. 50	Cold Springs	Completed
27	U.S. 50	Austin	Completed

Monthly Report Modifications

Continual data reconciliation of the application portal data and decimal rounding will result in marginal variances between reports and any significant variances will be explained.





Workshops, Meetings and Events

The clean energy programs' staff held the following event(s) where they handed out brochures and/or answered questions from the attendees:

- October 9, 2021 → Electric Vehicle Showcase, Reno NV
- October 13, 2021 → E Bus: E is for Everyone (E-Bus Academy), Virtual Informational Session
- October 23, 2021 → Electric Vehicle Showcase, Las Vegas NV

Contact Us

Website

<https://www.nvenergy.com/cleanenergy>

Email

cleanenergy@nvenergy.com

Toll Free

(866) 786-3823

Mailing Address

NV Energy
Attn: Clean Energy Programs
6100 Neil Road
M/S S2A35
Reno, NV 89511

