

Japanese Red Maple – *Acer palmatum atropurpureum*



White Japanese Wisteria – *Wisteria floribunda*



Kwanzan Flowering Cherry – *Prunus serrulata*



Further Tree Choice Options

Dwarf Alberta Spruce Moonlight Broom
Rhododendron Dogwood
Crabapple Smoke Tree –
 Cotinus coggygia
American Arborvitae (Emerald or Golden) –
Thuja occidentalis

Facts

Approximately half of all electrical outages can be attributed to trees – tree limbs blowing into the power lines, or dead or diseased trees falling into the lines.

For the safety of our customers and our employees, over 12,000 trees are pruned each year in Sierra Pacific’s service territory to prevent electrical outages caused by trees and tree limbs.

For more information:

nvenergy.com/safety/treetrimming.cfm

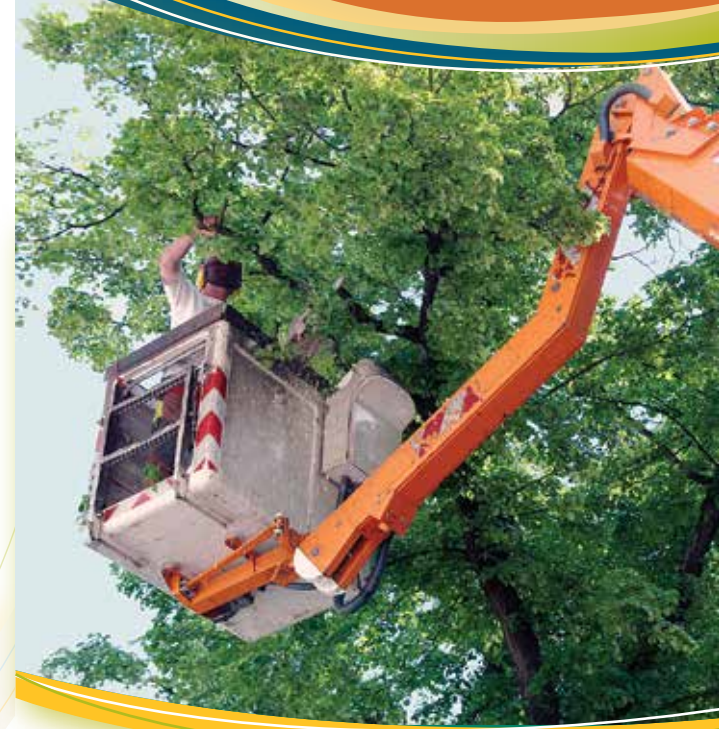
Northern (775) 834-5589

Southern: (702) 402-4102



Right Tree Right Place

GUIDELINES FOR UTILITY LINE SAFETY



Right Tree - Right Place

Planting the right tree in the right place will enhance your property value, provide shade, contribute to your enjoyment of your yard, supply wind protection, and potentially lower your maintenance costs. Well planned landscaping will not only add beauty to your yard, but will also ensure that the plants and trees are compatible with overhead utility lines.

Plant With an Eye for The Future.

Trees which will be small at full growth, can be planted adjacent to power lines. Trees which will grow taller than 25 feet at maturity need to be planted well away from the power lines. When the wrong trees are planted in the wrong place – too close to the power line – they will

become a deadly hazard. Children or adults playing in, working on, or touching limbs that contact power lines can be seriously or fatally shocked. Trees contacting power lines can also cause catastrophic fires. Tree growing into power lines will cause electrical outages affecting both residences and businesses. In selecting a location to plant trees

on your property, look above to see where electrical power lines are, as well as determine where underground power lines and conduits for other utilities are located.

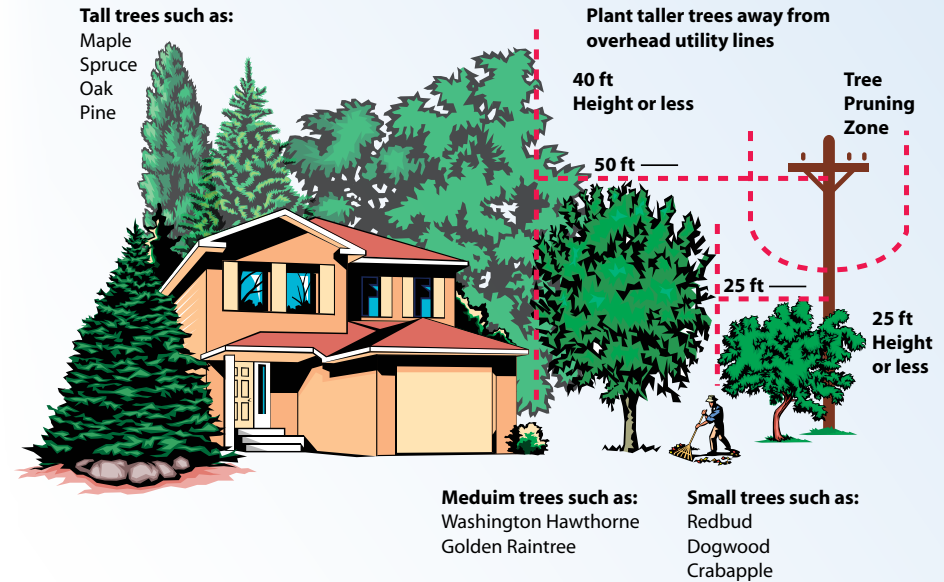


Planting Suggestions

- Contact your city parks department or public works department to determine whether your city has guidelines for selecting and planting trees as well as to ensure you are not planting on city property, such as the area between the sidewalk and the street.
- Dig the hole as deep as the root ball and two to three times as wide.
- Plant the tree at the same depth as it was grown in the nursery. Do not bury it deeper than where the trunk meets the soil. Cut and remove any burlap, string or wire.
- Water the tree thoroughly.
- Remove any support stakes no later than one year after planting.

Trees to Avoid Planting Near Power Lines

Giant Sequoia	Ash
Cottonwood	Elm
Birch	Pine
Quaking Aspens	Maple
Poplars	



Potential Trees

While it is suggested that no tree be planted directly under or adjacent to an electrical power line, the following is a list of low growing trees and shrubs, that a homeowner may find useful in landscaping their yard.



Thundercloud
Flowering Plum –
Prunus cerasifera