

## A Tree on Your Property

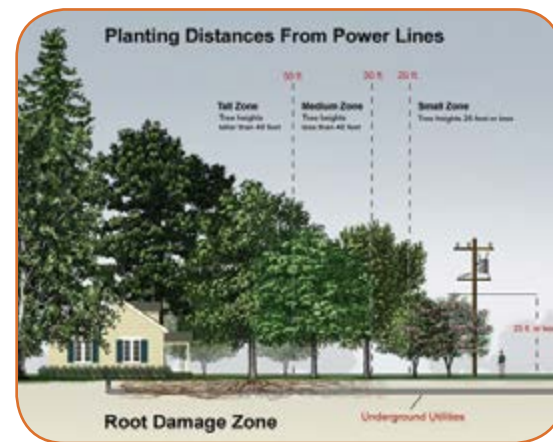
It is the property owner's responsibility to keep trees clear of their electric service line. This is the line that runs from the pole to the house. NV Energy will prune trees that grow too close to high voltage power lines. These power lines run from pole to pole. It is always a good idea to call NV Energy to inspect any trees that grow close to any power lines. The clearance space required increases as the voltage increases. Trees don't need to be touching the power lines to require pruning. They will be pruned if they are growing into the clearance space. Achieving the required clearance may mean pruning on your property.

## Why Not Just Shape Trees?

Shaping was once a popular practice with tree pruning, but it has now been learned that this is not horticulturally correct, as it can create a safety hazard to both your property and overhead lines. Shaped trees re-grow quickly with vertical suckers that sprout up from cut branch ends. The suckers are only weakly attached to the branches and are more likely to break off, even in only moderate winds, creating a greater problem of windborne debris. This can lead to power blackouts and the need for far more frequent tree pruning. Proper pruning may look severe at first but trees will re-grow at a normal rate and are trained away from power lines. Tree health is maintained and even enhanced by correct cutting at the branch collar.

## You Can Help

Customers can help reduce costs and maintain a pleasant environment by ensuring trees of the right size are planted under and around power lines. Remember "*Right Tree, Right Place.*" Seek permanent solutions. Do not plant trees near electric lines; or plant only low-growing, compact varieties. The guidelines given here aim to reduce sprouting, reduce the working time in a tree for the tree worker, increase the time between pruning cycles, and help the trees planted near lines to be healthy, safe and as attractive as possible. It is better for the trees, lines and customers to remove fewer but larger branches at nodes. Nodes are where branches shed naturally. It will take time to make all the adjustments given here. But, if we all work together, the adjustments will come. And the trees, the tree workers, the electric power companies, and the electric power users will all benefit.



## IMPORTANT NV ENERGY CONTACT INFORMATION

### NV Energy Tree Pruning Request Line

Northern (775) 834-4444

Southern (702) 402-5555

[nvenergy.com/tree](http://nvenergy.com/tree)

### Automated Power Outage and Emergency Service

Northern (775) 834-4100

Southern (702) 227-2900

### Customer Service

Northern (775) 834-4444

Southern (702) 402-5555

### En Espanol

Northern (775) 834-4700

Southern (702) 402-5554



## Why Does NV Energy Prune Trees?

CUSTOMER SAFETY



## Why Does NV Energy Prune Trees?

NV Energy's Tree Pruning Program is intended to help protect the public, protect property and maintain electric reliability. At NV Energy, trees are a cause of power outages. Short circuits from branches rubbing against power lines, branch breakage and trees blown over during storms are just a few of the hazardous situations that can occur.

### Safety

Tree pruning is an essential part of maintaining a safe and reliable supply of electricity for your convenience. Attempting to prune or climb a tree near power lines can be dangerous. Each year, hundreds of people throughout the United States are injured or killed when they climb or prune trees. Concealed power lines can seriously harm children climbing in the branches. Power lines broken by falling branches are extremely dangerous and may cause fire, shock or electrocution. By pruning trees and brush we can reduce tree-related outages and eliminate safety hazards. Please remember that any trees interfering with utility power lines can lead to a dangerous situation.

### Legislation

Because tree pruning is so important, legislation exists which requires both NV Energy and the property owner to ensure that a minimum clearance space between trees and power lines is maintained.

## Why Does NV Energy Prune Trees on Private Property?

Sometimes trees will grow to reach NV Energy lines. Under these circumstances NV Energy will prune branches to prevent damage and danger to the power lines from swaying branches.

### Who Does The Work?

NV Energy uses skilled and specially trained staff and selected contractors who have received training to meet the requirements given by OSHA and ANSI Z 133.1-2000.

### How Do We Prune Trees?

At NV Energy we follow the work practices recommended by *The International Society of Arboriculture; ANSI A300 2001 Tree Pruning*, and described by Dr. Alex L. Shigo in his book, *Pruning Trees Near Electric Utility Lines: A Field Pocket Guide For Qualified Line-Clearance Workers*.

These practices include:

1. Techniques consistent with the practices of natural, lateral and drop crotch pruning.
2. Cuts are made back to a main stem or branch of sufficient size. In no case shall deciduous tree limbs be stubbed off at the edge of the clearing limits.
3. Wherever possible, all pruning cuts shall be made to direct future growth and sprouting away from the conductors.
4. Conifers should be pruned in a manner that allows them to retain as much of their natural shape as possible.

5. All dead branches overhanging primary conductors at any height shall be removed.
6. A minimum of cuts should be utilized to achieve required clearances.
7. Where practical, cuts should be primarily restricted to large diameter branches made well within the crown. Shaping through the use of many small diameter branches in the outer crown should be avoided.
8. Remove living branches by making cuts as close as possible to the branch collar. Remove dead branches by making cuts as close as possible to the living tissues that surround the dead branch at the base.
9. Precautions shall be taken to avoid stripping or tearing of bark when cutting large-diameter limbs.

## Who Has Responsibility to Make Sure Trees are Clear from Power Lines?

Everyone. Although NV Energy owns, maintains, inspects, and prunes around power lines at regular intervals, it is impractical for NV Energy to address trees growing at different growth rates on a day-to-day basis throughout the valley and surrounding areas. NV Energy not only relies on its own employees, but also property owners, customers, and tree pruning service professionals to relate information about trees that are close to or even in contact with power lines. Since safety is NV Energy's first concern, there is no cost to prune or remove trees when they are growing close, could make contact or could fall into the power line and create a hazard.

## TREE PRUNING EXPLAINED

### PRUNING METHODS

