

Residential

# Carrier® Thermostat Quick Reference Guide



Thank you for taking an active role in helping reduce the region's demand for electricity during the summer.

Participating in Nevada Power's Cool Share program, our central air conditioning cycling program, lets valuable customers like you save energy – and money – while protecting the environment, during the hot summer months.

As a Cool Share participant, you are helping to reduce the consumption of high-cost fossil fuel and doing your share to help Nevada Power protect our environment.

To learn more please visit our website: [NevadaPower.com/CoolShare](http://NevadaPower.com/CoolShare) or call 702-402-1111

Installed by: \_\_\_\_\_

Number of Devices: \_\_\_\_\_

Date: \_\_\_\_\_

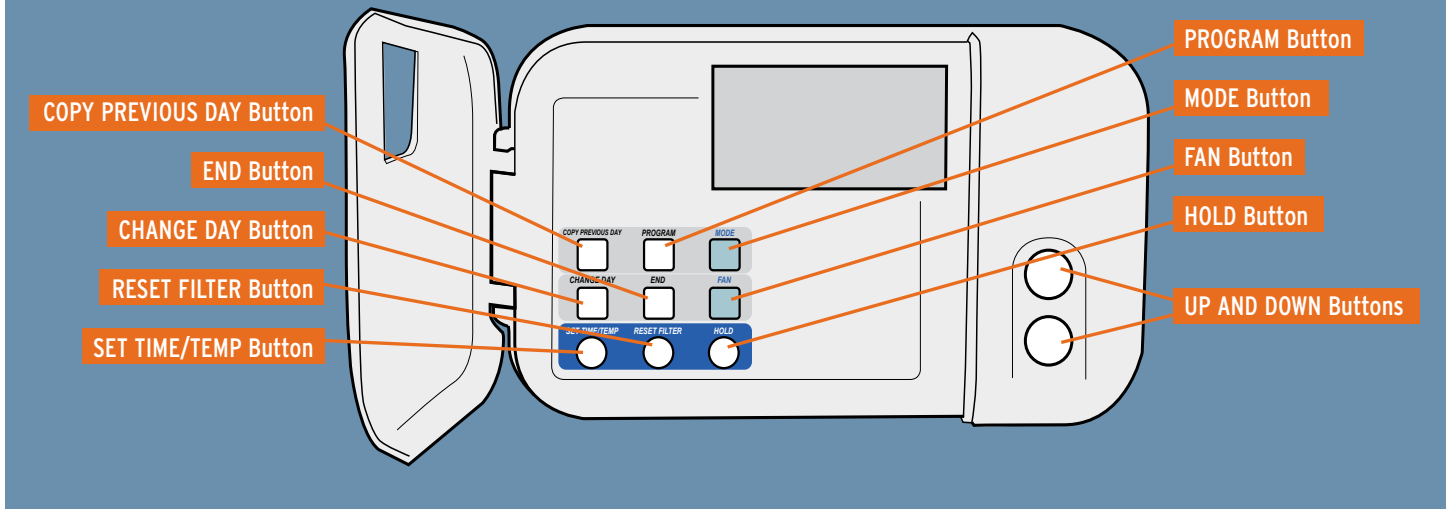
Default Password : \_\_\_\_\_

Comments: \_\_\_\_\_

\_\_\_\_\_  
\_\_\_\_\_



# Getting to Know Your Cool Share Thermostat



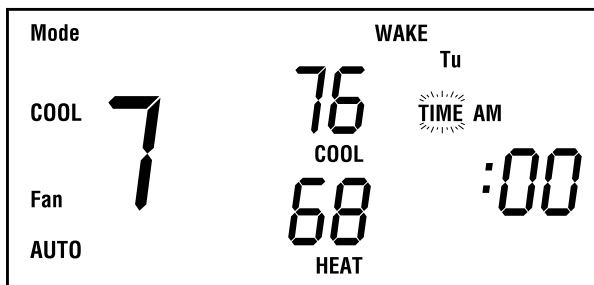
## Cool Share Thermostat Instructions

### Setting the current day

1. Press the CHANGE DAY button. The day of the week will change.
2. Stop on the desired day. The thermostat then follows the program schedule for that day.

### Setting the current time

1. Press the SET TIME/TEMP button. The word TIME flashes on the display.



2. Press the UP or DOWN buttons until the correct time is displayed. To quickly advance to the proper time, press and hold the UP or DOWN button. To ensure accurate programming, be sure that AM or PM is properly selected.
3. When the correct time appears on the display, press the END button.

## Setting mode operation

1. Press MODE button.
2. When the MODE button is pressed, the words OFF, HEAT, COOL, and AUTO will rotate on the display. If you have a heat pump, the display will show OFF, HEAT, COOL, AUTO, and EHEAT. NOTE: In AUTO mode, your system will heat or cool as needed to reach your temperature settings. AUTO mode may be turned off. Contact your indoor weather expert for details.
3. Continue to press the MODE button until you reach the desired setting.

## Setting your comfort schedule

1. Press the PROGRAM button. The word PROGRAMMING appears on the display and the word TIME flashes on the display. Above the clock, the word WAKE, DAY, EVE, or SLEEP will appear. The day to be programmed is displayed with a 2-letter abbreviation: MO, TU, WE, TH, FR, SA, or SU. NOTE: Your thermostat will always start the programming process in the current time period and current day. You may wish to begin programming on a different day or time period. To change the time period, press the PROGRAM button as needed until the correct time period, WAKE, DAY, EVE, or SLEEP appears. Press the CHANGE DAY button to display the desired day.
2. Using your personalized comfort schedule as a guide, press the UP and DOWN buttons to set the time for the indicated time period.
3. Press the SET TIME/TEMP button. The word HEAT flashes on the display. NOTE: Pressing the SET TIME/TEMP button allows you to select between HEAT, COOL and TIME settings.
4. Press the UP and DOWN buttons to adjust the heating temperature setting to match your personalized comfort schedule.
5. Press the SET TIME/TEMP button to select the cooling temperature setting for this time period. The word COOL flashes on the display.
6. Press the UP and DOWN buttons to adjust the cooling temperature setting listed in your personalized comfort schedule. NOTE: Don't forget, your COOL setting must be at least 2° higher than your HEAT setting. Your thermostat will automatically change your previously set temperature to maintain that 2° difference.
7. Press the PROGRAM button to advance to the next time period. Following your personalized comfort schedule, enter times and temperatures for DAY, EVE, and SLEEP time periods. You have now programmed 1 day into your thermostat. At this time, you can either repeat steps 1-7 until all days of the week have been programmed, or you can copy the schedule onto the remaining days of the week. See the section on "Copying a daily schedule" for details. NOTE: During programming, if you have not touched a button or made an entry within 3 minutes, the programming mode will automatically shut off. Anything you have programmed will be saved.

8. Press the END button when you finish entering your comfort schedule. NOTE: Once you've programmed your comfort schedule, the thermostat will continue operating on that program until you enter an alternative schedule. It may be appropriate to adjust temperatures as seasons change.

## Copying a daily schedule

Typically, your Monday through Friday comfort schedule will be the same. That's why the thermostat includes a COPY PREVIOUS DAY button. When programming, this eliminates the need to re-enter identical information for each day.

1. Program a daily schedule. Suggestion: Start with Monday so the following 4 days can be copied.
2. Press the CHANGE DAY button to move to the next day.
3. Press the COPY PREVIOUS DAY button. The previous day's schedule will be entered into the new day.
4. Continue this process by repeating steps 2 and 3.

## Overriding your comfort schedule

There are 2 ways to override the existing program.

1. Pressing the HOLD button. By pressing the HOLD button, the thermostat will maintain the current temperature settings and ignore the comfort schedule for an indefinite period of time. The word HOLD will appear in the display. Press the HOLD button a second time and the thermostat will resume normal operation, returning the temperature settings to the programmed comfort schedule. The thermostat will change the temperature setting as needed upon the next program cycle. Pressing HOLD will not permanently alter your set program.
2. Pressing the UP or DOWN buttons. By pressing the UP or DOWN button, the current temperature settings appear on the display. Pressing the UP or DOWN button again will temporarily change the temperature setting above the flashing indicator as needed. To change the other setting for this time period, press the SET TIME/TEMP button until the other setting indicator flashes. Pressing the UP or DOWN button again will temporarily change the other temperature setting as needed. The thermostat will automatically restore the comfort schedule settings at the next programmed time.

# Cool Share Thermostat Web Interface Instructions

## Logging In to Your Emi Thermostat

1. Connect to the Internet with either Microsoft® Internet Explorer (Version 5.0 or greater) or Netscape® Navigator (Version 4.7 or greater).
2. Go to [NevadaPower.com/CoolShare](http://NevadaPower.com/CoolShare) and click on the “New Residential Sign Ups” button to be taken to the Homeowner/Residential page of the Cool Share program website. Click on the “CARRIER THERMOSTAT” link. Follow the instructions to reach the Welcome screen shown in ►Figure 1 below:

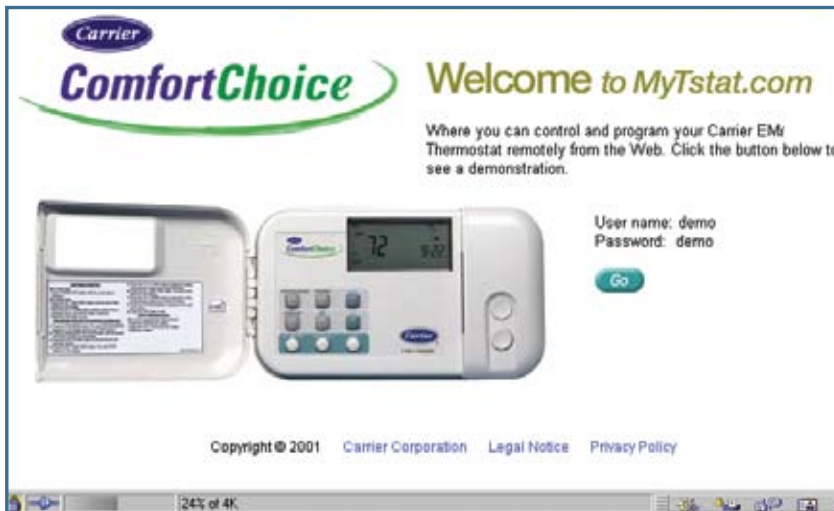


Figure 1: Welcome Screen

3. Click on Go to proceed to the Login screen.

NOTES: You may now receive a New User Information message informing you that you must wait 7 days after installation prior to accessing this website. This message will self close and the Login screen shown in ►Figure 2 below will appear. Click on Continue to proceed.

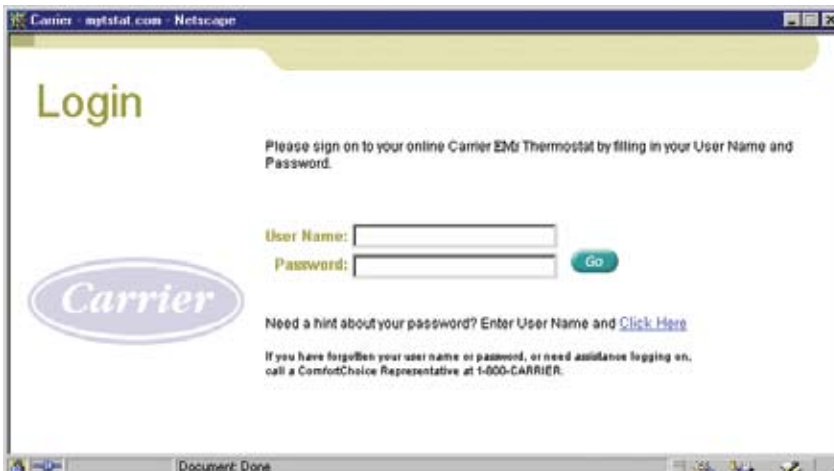


Figure 2: Login Screen

4. Enter your user name and password. Then, click the Go button.

NOTE: Your username will be your Premise ID. Your default password will be given to you by the installer, and can be found on the front cover of this brochure. If this is your first log in, you will be presented with a Privacy and User Agreement. Read the agreement and scroll to the bottom of the page to select Agree. You will then be prompted to change your password.

After clicking on Go, the thermostat Welcome screen will then display.

The Welcome screen is the gateway to your thermostat. From this screen you can choose to do the following:

- Switch or Rename your thermostat zone
- Control your thermostat
- Program your thermostat
- Change your password.

## Controlling your Thermostat

Follow the instructions below to change the temperature settings in your thermostat, change the mode (off/cool/heat/auto), or obtain the current temperature and settings from your thermostat.

1. From the Welcome screen, click the Go button, which is located to the left of Control My Thermostat.

The Control My Thermostat screen will now display. Refer to ►Figure 3.

Moving the cursor over each button or label will display operating information for each thermostat item. For example, placing the cursor on the label “Fan” displays the following information:

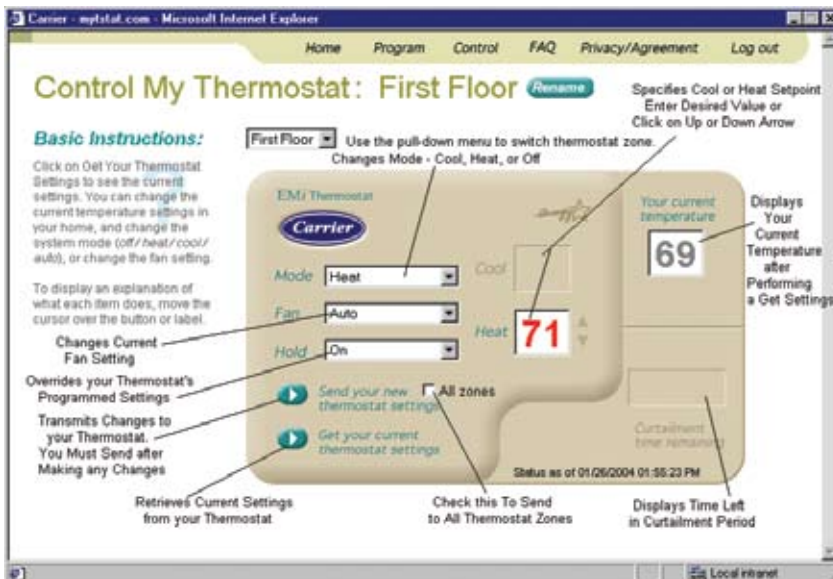


Figure 3: Control My Thermostat Screen

Click on the arrow to view the Fan settings. Select the desired setting from the pull-down menu. The normal setting for the fan is “Auto”, which runs the fan when your heating or cooling equipment is running. To run the fan continuously, select “On”.

2. Make changes as desired, and click the “Send” button to transmit the changes to your thermostat.
3. Clicking on “Get” will retrieve current temperature and settings from your thermostat.

## Programming Your Thermostat

Follow the instructions below to create a new or edit an existing thermostat schedule.

1. From the Welcome screen, click the “Go” button, which is located to the left of “Program My Thermostat”. The Program My Thermostat screen shown in ►Figure 4 will now appear.

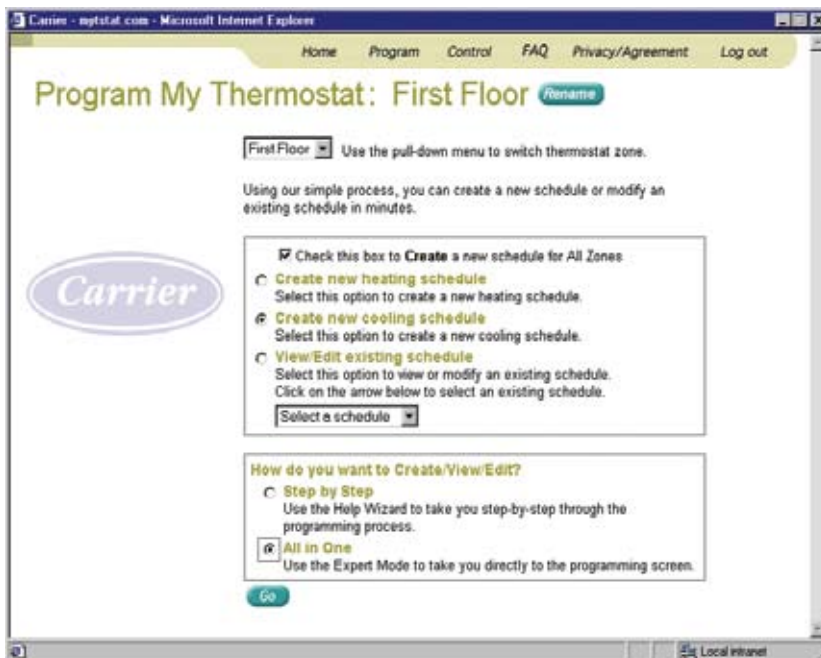


Figure 4: Program My Thermostat Screen

2. Click to do one of the following:
  - Create new heating schedule
  - Create new cooling schedule
  - View/Edit an existing schedule. You must also select the name of the existing schedule from the pull-down menu.

3. You must now select a method for creating, viewing, or editing the schedule.
  - Select “Step by Step” to use the help wizard, which will give you step-by-step assistance.

NOTE: This method is recommended if you are a novice user.

- Select “All in One” if you are a more advanced user and wish to proceed directly to the all in one programming screen.

If you selected the Step by Step method, the “Step by Step” programming screen will display and you will be guided through the process of setting up your weekly schedule and accompanying temperature setpoints. Follow the prompts, clicking “Next” to proceed through the screens.

If you selected the “All in One” method, the all in one “Program My Thermostat” screen will display. Click to select the days of the week, drag the time arrows to select times, and click on the up or down temperature arrow to specify temperatures.



# Frequently Asked Questions About Cool Share

## Is the Carrier programmable thermostat better than the one I am currently using?

Probably, yes. This is a top-of-the line thermostat, so even if you've recently purchased a new thermostat, your FREE Carrier thermostat may be better.

## Does this thermostat replace all of the ones I already have?

Yes. We will replace all of your thermostats with the new Carrier thermostat. You may, however, keep your old thermostats.

## Do I need to have an internet connection to use this new web-programmable Thermostat?

No. Although you can log into your thermostat from any computer, you do not need an internet connection in order to benefit from the Carrier thermostat.

## What is included in my Cool Share installation?

Your Cool Share installation includes a FREE Carrier Programmable thermostat – a \$300 value – as well as a Cool Share communications module. Please note: An alternative thermostat of equal value may be offered to customers in areas of weak signal reception.

## Does that mean my home will get hot?

No. Typically, you can expect a very gradual temperature rise of up to 4°F by the end of a conservation period. Many customers don't even notice this.

## How often will Cool Share conservation periods occur?

Conservation periods occur during times of peak electricity demand, generally on extremely hot weekdays from June 1 to September 30 (between 1 p.m. and 7 p.m.). The program is not activated on holidays or weekends.\* You can expect about 33 conservation periods over the summer. Most conservation periods are expected to occur between 4 p.m. and 7 p.m., lasting about three hours.

## How did you calculate earnings of up to \$29?

First, we assumed full participation, since you can choose not to participate in any single conservation period. Then, your earnings or "shares" are based upon the expectation of 33 conservation periods lasting three hours each. Nevada Power rewards \$0.3333 per conservation period hour after the first twelve hours (four typical periods). This equates to approximately \$1 per conservation period for 29 periods, hence the \$29 earnings. By sharing conservation periods with us—the reliability periods—you are helping ensure the reliability of the electrical system during the hours of maximum peak conditions.

## When will I receive the Cool Share earnings?

You will receive your "shares" by a separately mailed check at the end of each cooling season, typically in the month of October.

\*In order to ensure grid reliability, Nevada Power maintains the right to activate the program at anytime due to a critical generation emergency or record peak demand.

For more Frequently Asked Questions, please go to [NevadaPower.com/CoolShare](http://NevadaPower.com/CoolShare) or call 702-402-1111 .