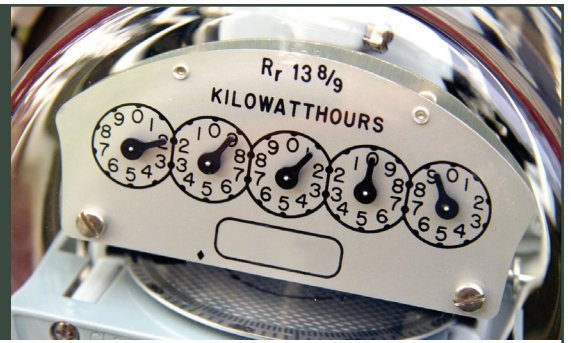


Tips For Reading Your Analog Meter

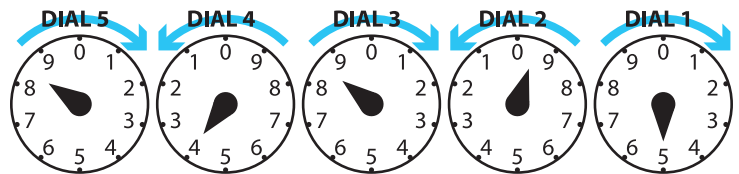


Stand directly in front of the meter so you can clearly see the location of each pointer. Record the numbers on each dial, starting from the right and ending on the left, using the following rules:

- If the pointer is between two numbers, record the smaller number
- If the pointer is between 9 and 0, always record 9
- If the pointer is exactly on a number, record the next lowest number unless the pointer on the dial to the right has passed 0

STEP-BY-STEP EXAMPLE

In this example, the reading is **83895**:



- **DIAL 1:** The pointer is directly on the number 5. Since there is no dial to the right, record 5.
- **DIAL 2:** The pointer is between 0 and 9. According to the rules above, record 9.
- **DIAL 3:** The pointer is between 8 and 9. Record the smaller number, which is 8.
- **DIAL 4:** The pointer is directly on the number 4, but the dial to the right has not passed 0. So, record the next lowest number, which is 3.
- **DIAL 5:** The pointer is between 8 and 9. Record the smaller number, which is 8.



Northern Nevada
(775) 834-4444

Southern Nevada
(702) 402-5555

