

Presentation will start soon!



Welcome





Special Guest

Dave Ulozas

Senior Vice President, Renewable Energy and Origination



Program Overview

Mark Darden

Sr. Operations Manager, Business Energy Services



Agenda

- Program Offerings
- How it works
- Project Examples
- Contractor Network
- Sneak peak at PowerShift Programs
- Price Vault Drawings
- Break Out Sessions

Go to our website; www.nvenergy.com/bes

Our Mission

Bring more value to NV Energy business customers through a host of services designed to help reduce energy use, lower operating cost and improve facility operational efficiency through the implementation of energy efficiency measures.



Business Energy Services

What We Offer

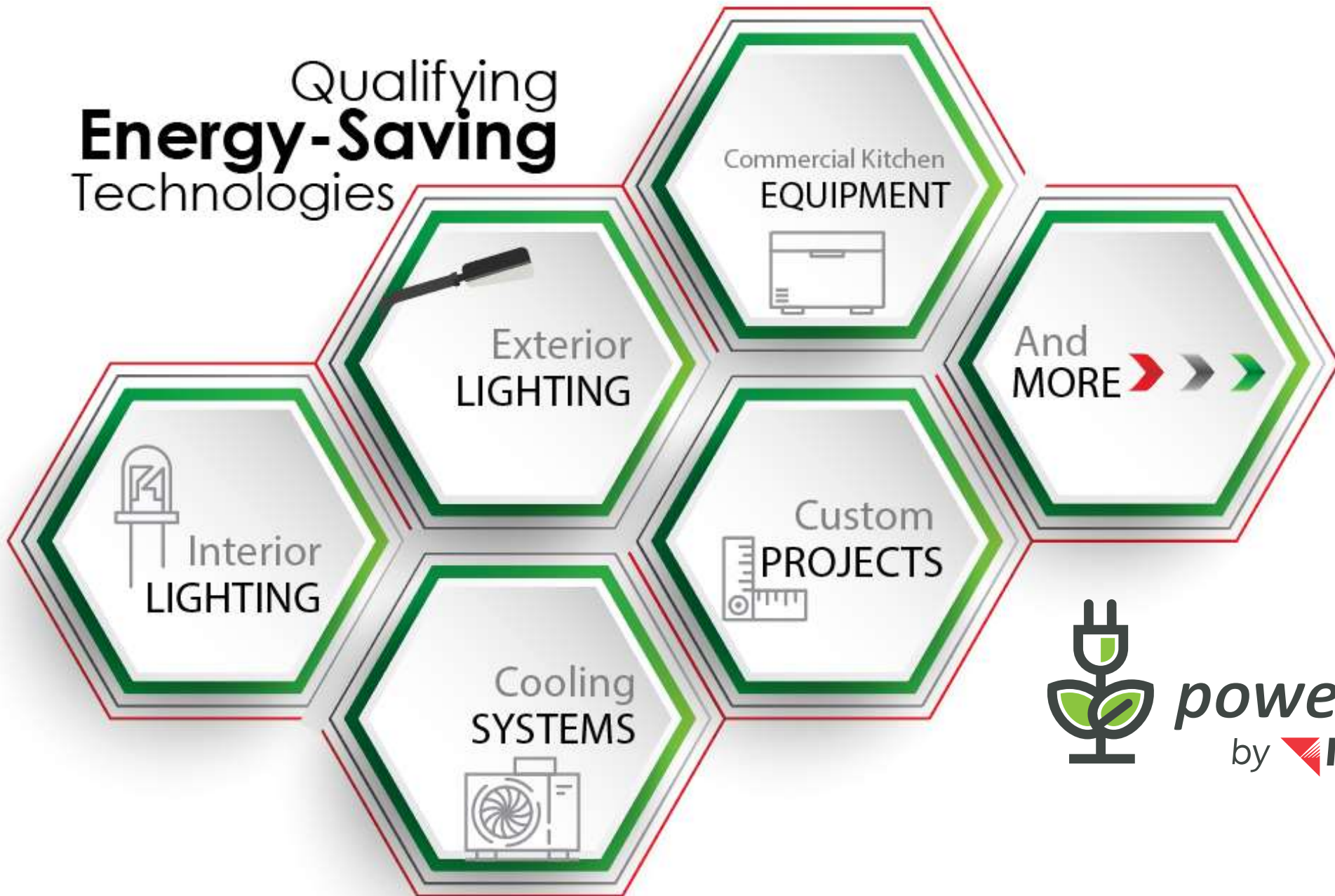
- Application Support
- Technical Services
- Free Classroom Education & Training
- Non-Profit Agency Grants
- Small Business Project Incentives
- Instant Discounts
- Retrofit Project Incentives
- New Construction Incentives



Customer Benefits

- Reduced Energy Expenses
- Reduced Carbon Footprint
- Annual Cash Savings
- Improved Comfort

Qualifying Energy-Saving Technologies



powershift
by  **NVEnergy**





FREE Training & Education

- Nationally recognized experts
- Explore energy-saving topics
 - Lighting, HVAC, Compressed Air
 - Variable Frequency drives
 - Strategic Energy Management
 - Retro-commissioning
- Learn about energy efficiency opportunities
- The latest energy-saving technologies
- How to SAVE with incentives

Call an Energy Advisor 1-800-342-6335

A group of volunteers wearing teal t-shirts and face masks are working together to handle a large, wrapped cardboard box. The scene is set in what appears to be a warehouse or distribution center, with shelves of supplies visible in the background. The overall atmosphere is one of organized community service.

Non-Profit Agency Grants

How it Works



**Assists nonprofit 501(c)3
with energy-saving
improvements**



Reduce operational costs

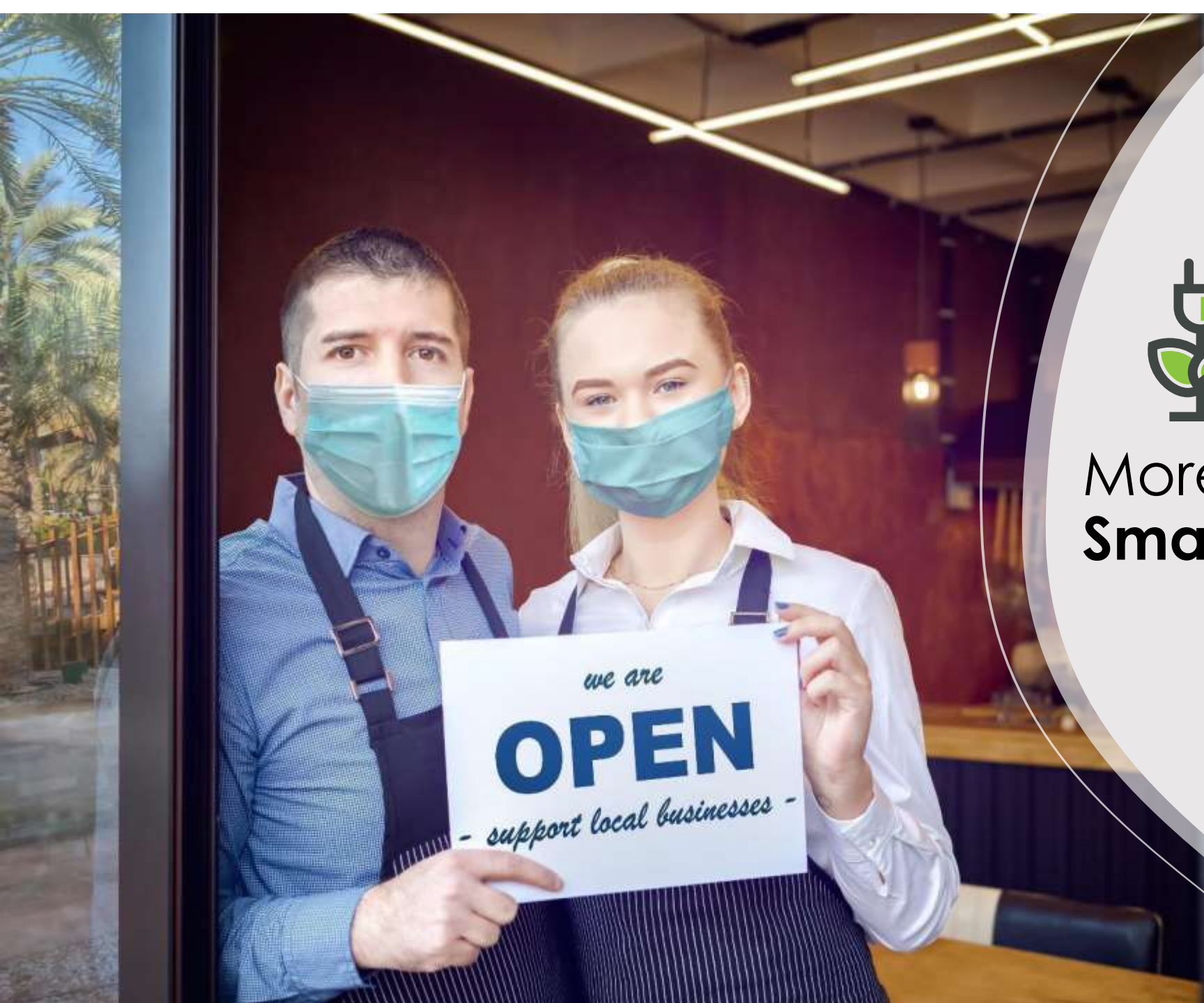


**Must be an NV Energy
customer in good standing
& physically located within
company's service area**



**Grant applications are
reviewed for eligibility**

- Individual projects may be funded in full up to \$5,000
- For grants between \$5,000 & \$10,000, a 50% matching investment is required



powershift

by  **NV**Energy

More Ways to Save
Small Business

Small Business Authorized Contractors

Southern Nevada Contractors

Northern Nevada Contractors



Adamik Electric

(702) 750-1811

Able Electrical Services

(702) 533-0197

Advanced Lighting Services

(702) 566-3373

Allstate Electric

(702) 868-1304

Amazon Electric

(702) 580-6347

AO Electric

(702) 240-7724

Canyon Electric

(702) 384-4747

Eco Electric

(702) 682-2436

Facility Solutions Group

(702) 434-6698

Hilco Electric

(702) 429-5988

Patrick's Signs

(702) 873-4463

Republic Electric

(702) 348-4404

Schneider Electric

(702) 896-8300

Wright Ventures

(702) 263-1025

Yesco

(702) 876-8085



Talk with a Business Energy Advisor 1-800-342-6335



Eligibility

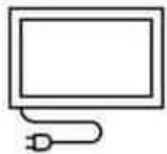
- NV Energy electric customers
- 400,000 kWh annual consumption



powershift
by  **NV**Energy

Instant Discounts

No application Needed



powershift
by  **NV**Energy

Eligible Products

Lighting	Incentive/unit
T8 4' Linear LED*	\$4
T8 2' U-Bend LED*	\$4
1'x4' LED Illuminated Panel & Troffers Containing LED Strip Lights	\$10
2'x2' LED Illuminated Panel & Troffers Containing LED Strip Lights	\$10
2'x4' LED Illuminated Panel & Troffers Containing LED Strip Lights	\$10

Kitchen	Incentive/unit
High Efficiency (HE) Fryer	\$200
Large Vat Fryer	\$200
HE Griddle	\$300
Convection Oven	\$350
Combination Oven	\$1,000
Steam Cooker	\$750
HE Holding Cabinets, Full Size	\$300
HE Holding Cabinets, 3/4 Size	\$250
HE Holding Cabinets, 1/2 Size	\$200

ES = Energy Star, CEE = Consortium for Energy Efficiency, SD = Solid Door, GD = Glass Door, cf = Cubic Feet



Refrigeration	Incentive/unit
Ice Machine ES/CEE I <300	\$50
Ice Machine ES/CEE I 300-500	\$75
Ice Machine ES/CEE I 500-1000	\$125
Ice Machine ES/CEE I 1000-1500	\$200
Ice Machine ES/CEE I >1500	\$250
Ice Machine ES/CEE II <300	\$100
Ice Machine ES/CEE II 300-500	\$150
Ice Machine ES/CEE II 500-1000	\$250
Ice Machine ES/CEE II 1000-1500	\$400
Ice Machine ES/CEE II >1500	\$500
Refrigerator SD ES < 15 cf	\$50
Refrigerator SD ES ≤ 15 cf V < 30 cf	\$75
Refrigerator SD ES ≤ 30 cf V < 50 cf	\$90
Refrigerator SD ES ≥ 50 cf	\$125
Freezer SD ES < 15 cf	\$60
Freezer SD ES ≤ 15 cf V < 30 cf	\$75
Freezer SD ES ≤ 30 cf V < 50 cf	\$80
Freezer SD ES ≥ 50 cf	\$200

Refrigeration	Incentive/unit
Refrigerator GD ES < 15 cf	\$50
Refrigerator GD ES ≤ 15 cf V < 30 cf	\$75
Refrigerator GD ES ≤ 30 cf V < 50 cf	\$90
Refrigerator GD ES ≥ 50 cf	\$125
Freezer GD ES < 15 cf	\$60
Freezer GD ES ≤ 15 cf V < 30 cf	\$75
Freezer GD ES ≤ 30 cf V < 50 cf	\$80
Freezer GD ES ≥ 50 cf	\$200



Instant Discounts

- Instant-savings on qualified products
 - Lighting
 - Kitchen Equipment
- NV Energy eligible business customer
- **Products not eligible for Retrofit, Small Business, and Non-Profit Agency Grants**

Lighting

- Bulb and Driver
- City Electric Supply
- Facility Solutions Group
- Main Electric Supply Company
- Grainger
- Wedco
- Crescent Electric Supply Company
- Bulbman, Inc.
- Regency Lighting
- Vegas Electric Supply
- MCOR Lighting
- Key Power Solutions
- Green Planet Corporation
- Platt Electric Supply
- Have Lights Will Travel
- Discount Lighting
- Gexpro
- GoGreenLighting.com, Inc.
- Nedco Supply
- Sierra Nevada Lighting, LLC
- Codale Electric Supply
- HD Supply Facilities Maintenance
- mySupplier
- USA LED
- Bulbtronics
- Commercial Lighting Specialties
- Las Vegas Lighting
- Capitol Light

Commercial Kitchen & Refrigeration

- Cresco-Resco





Applying for Incentives

Retrofit and New Construction

Talk with a Business Energy Advisor 1-800-342-6335

Three Easy Steps to Saving



Save
Energy & Money,
Year After
Year



PRE-APPLICATION
PROCESS

STEP
01

RESERVATION
PROCESS

STEP
02

FINAL APPLICATION
PROCESS

STEP
03

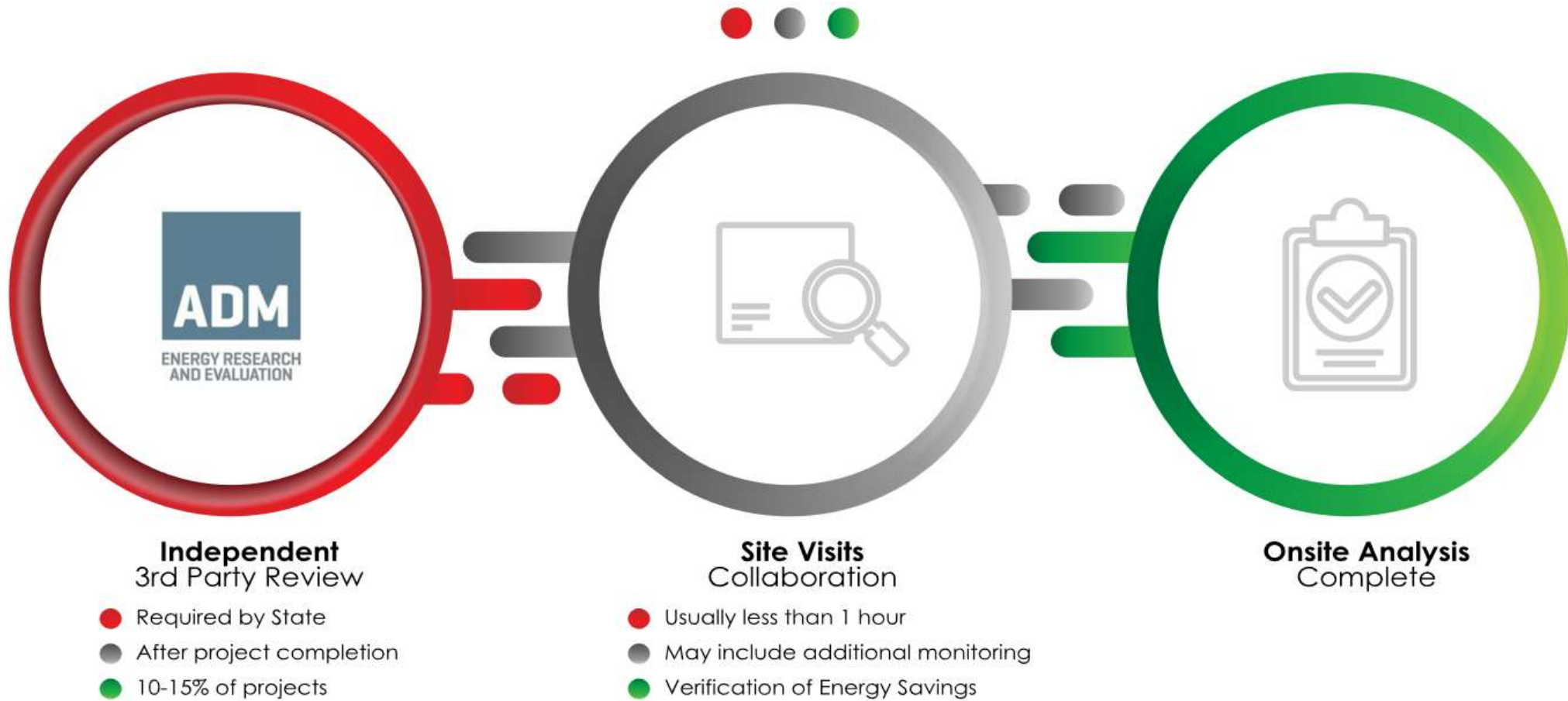
- Submit Pre-Application
- Subject to Pre Inspection
- Pending Pre-Approval

- Reservation of Funds Received
- 90 Day Clock Starts
- Energy Advisor Checkins

- Complete Project
- Submit Final Application
- Subject to Post-Inspection
- Receive Final Approval & Payment

▶ THE APPLICATION PROCESS

Measurement & Verification





Retrofit Incentives

- Prescriptive Incentives
 - Lighting
 - Cooling & Miscellaneous
 - Commercial Kitchen & Refrigeration
- Custom Incentives
 - Any measure that can verifiably reduce energy consumption
 - Measures that qualify for prescriptive incentives are NOT eligible for custom incentives



Business Energy Services 2021 Southern Retrofit Incentive Summary

Retrofit - Interior Lighting			
Measure	Size/Type	Unit	Incentive
Interior Lighting Lamp/Fixture	Interior	Watt Reduced	\$0.25
Interior LED Lamp, Hotel Guestroom	Interior	Watt Reduced	\$0.10
Delamp T8 Lamps	4-foot lamp	Lamp	\$3.00
Standard T8 to RW T8	4-foot lamp	Lamp	\$1.00
LED Exit Sign		Sign	\$15.00
LED Refrigerated Case Lighting		Lamp	\$25.00
LED Channel Sign	≤ 2 Feet	Letter	\$10.00
LED Channel Sign	> 2 Feet	Letter	\$25.00
Occ. Sensor on Refrigerated Case	Enclosed	Door	\$12.00
Occ. Sensor on Refrigerated Case	Open	LF of Case	\$4.00
Occupancy Sensors	Wall Box	Sensor	\$12.00
Occupancy Sensors	Ceiling Mount	Sensor	\$30.00
Occupancy Sensors	HB T5/T8 Sensor	Sensor	\$20.00
Occupancy Sensors	HB LED Sensor	Sensor	\$14.00
Daylighting Controls		Watt Controlled	\$0.10
Bi-Level Stairwell/Hall /Garage LED Fixtures with Sensors		Watt Controlled	\$0.40
Retrofit-Exterior and Garage Lighting			
Garage LED Replacing HID 24/7	24/7 Operation	Watt Reduced	\$0.25
Exterior Replacing HID 12 Hr	12 Hour Operation	Watt Reduced	\$0.20
Garage High Wattage Screw-In CFL	24/7 Operation	Watt Reduced	\$0.20
Exterior High Wattage Screw-In CFL	12 Hour Operation	Watt Reduced	\$0.15
LED Channel Sign	≤ 2 Feet	Letter	\$10.00
LED Channel Sign	> 2 Feet	Letter	\$25.00
Garage Hard-Wired CFL < 29W		Fixture	\$25.00
Garage Hard-Wired CFL > 30W		Fixture	\$40.00
Exterior Hard-Wired CFL < 29W		Fixture	\$15.00
Exterior Hard-Wired CFL > 30W		Fixture	\$30.00

Please refer to 2020 Business Energy Services Retrofit Specifications document for complete specifications

¹ Incentive varies by transformer size, see application.

² Incentive varies by UPS size and input dependency characteristics, see application.



Retrofit - Commercial Kitchen		
Measure	Unit	Incentive
Ventilation Control - Retrofit	HP	\$350.00
Ventilation Control - New Hood	HP	\$300.00
Anti-Sweat Heater Controls	Door	\$40.00
EC Motors: Walk-in Boxes	Motor	\$40.00
EC Motors: Refrigerated Cases	Motor	\$30.00
Evaporator Fan Controller	Controller	\$35.00
ENERGY STAR® Tier II Vending Machine Refurbishment Kit	Kit	\$75.00
Vending Machine Controls	Controller	\$90.00
Snack Machine Controls	Controller	\$15.00
Floating Head Pressure Controls	HP	\$35.00
Reach-in Cooler Controls	Controller	\$30.00

Please note that 4' T8 LED and 1'x4', 2'x2' & 2'x4' LED TROFFERS Illuminated Panels and some kitchen equipment are no longer eligible for incentives through this program. Please see Business Energy Services Instant Discount Program at www.nvenergy.com/bes for details.



Save
Energy &
Money
Year After
Year

Retrofit - Transformer and UPS		
Measure	Unit	Incentive
Single & Three Phase High Eff. Transformer	Per Unit	Varies ¹
Single & Three Phase High Eff. Transformer - incremental	Per 0.01% Above Qual.	Varies ¹
High Eff. UPS - Single & Multi-Normal	Output kW	Varies ²
Retrofit - Miscellaneous		
Escalator Motor Controllers (EMC)	HP	\$20.00
VSD Pool Pump & Scheduling Control	HP	\$150.00
VSD Air Compressor Replacement < 50hp	HP	\$45.00
Compressed Air Engineered Nozzles	Nozzle	\$10.00
High Efficiency Battery Chargers	Charger	\$225.00
Demand Control Ventilation - Parking Garage	HP	\$90.00
Demand Control Ventilation - Interior Spaces	Per 1,000 sq ft	\$50 per 1,000 sq ft
Irrigation Nozzles	Nozzle	\$3.00
Irrigation Sprinklers	Sprinkler	\$2.50
Irrigation Regulators	Regulator	\$3.50
Irrigation Gaskets	Gasket	\$2.00
Retrofit - Cooling		
Air-Cooled Units:		
(<=65 kBtuh), Qual EER	Ton	\$12.00
(65 kBtuh), 1 Additional EER	Ton	\$8.00
(>65-135 kBtuh), Qual EER	Ton	\$12.00
(>65-135 kBtuh), 1 Additional EER	Ton	\$10.00
(>135-240 kBtuh), Qual EER	Ton	\$18.00
(>135-240 kBtuh), 1 Additional EER	Ton	\$10.00
(>240 kBtuh) Qual EER	Ton	\$18.00
(>240 kBtuh) 1 Additional EER	Ton	\$10.00
Water-Cooled Units, EER=14	Ton	\$25.00
Water-Cooled Units, 1 Additional EER	Ton	\$10.00
PTAC/PTHP, Qual EER	Ton	\$50.00
PTAC/PTHP, 1 Additional EER	Ton	\$20.00
Programmable Thermostat	Each	\$25.00
Window Film	Sq. Foot	\$0.70
VSD on HVAC Fans and Pumps	HP	\$50.00
Air Side Economizers	Ton	\$25.00
Retrofit - Custom		
	Annual Energy Savings (kWh)	
Custom Incentive	\$0.05 /kWh	
Retro-Commissioning	\$0.05 /kWh	

LEARN MORE

CALL | 800.342.6335

EMAIL | bes@nvenergy.com

WEB | www.nvenergy.com/bes

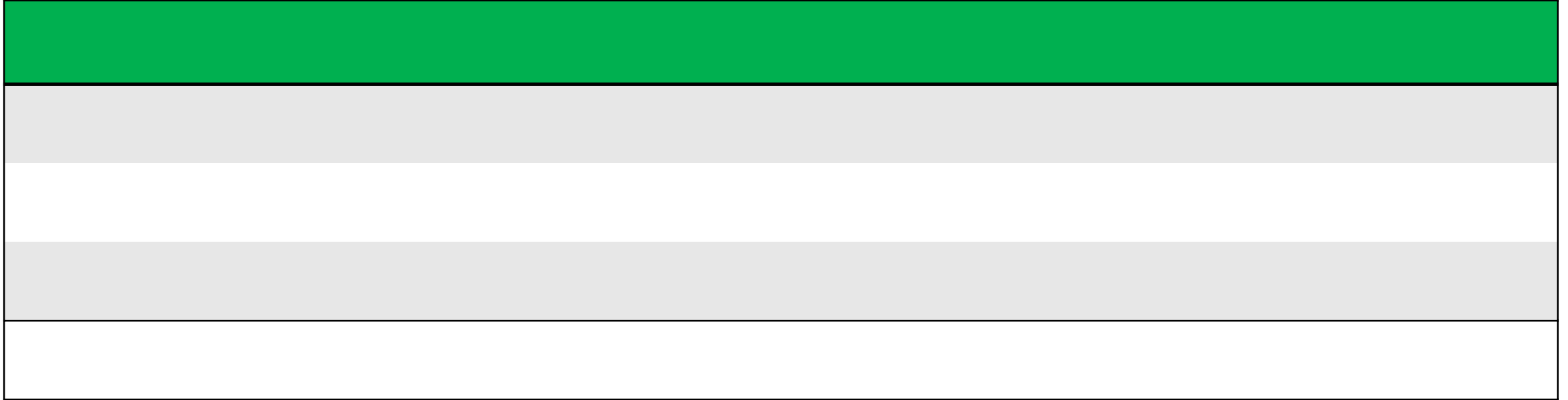
More Ways to Save

Retrofit Incentives

- Administered on first-come, first-served basis
- Incentives cannot exceed 50% of project costs
 - exception; retro-commissioning projects
- Retrofit incentive limits will be tiered **PER CUSTOMER (per Tax ID #)** per calendar year as follows:

Tier	Lower Cost Limit	Upper Cost Limit	Percentage Paid
1	\$0	\$100,000	100%
2	\$100,001	\$500,000	50%
3	\$500,001	\$1,000,000	20%
4	\$1,000,001	UP	10%

Total project cost \$1,200,000



How does tiering work?



Let's Talk Project Costs

- Project cost includes:
 - Material, Labor, Burden/Overhead, Taxes, Delivery fees and Rental costs
 - Internal labor can be included up to 25% of the total material cost dependent upon the complexity of the project.
- Acceptable documentation:
 - **Itemized** invoices, Paid Purchase Orders, Schedule of Values, AIA format Payment Requests and Signed Contracts

Custom Incentive Calculations

- Must provide **initial saving calculations** and documentation
- Documentation includes:
 - Savings calculation method - Tell us exactly how you arrived at your kWh number
 - Operation and efficiency assumptions – Be specific!
6 am – 5 pm Monday – Friday, not 8 hours a day
 - Manufacturer equipment cut sheets or material specification sheets
 - Monitoring data if available
 - Modeling data
 - Additional information as requested



New Construction Incentives



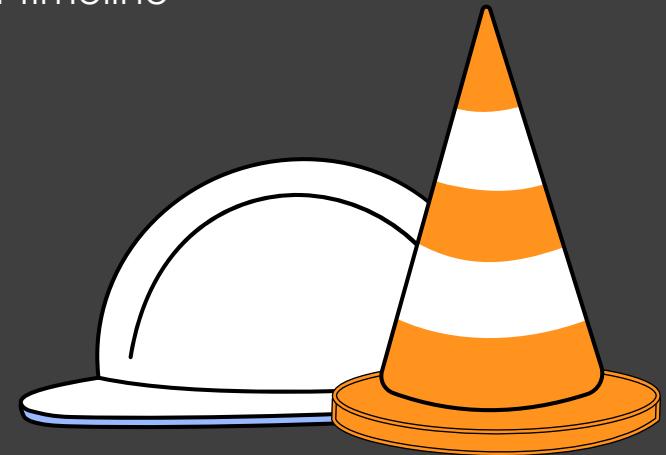
Pre application required



Completed projects are not eligible



Funds are reserved based on project timeline



New Construction

- The intent of the offering is to encourage energy efficiency in newly constructed, major renovated areas, tenant improvement spaces, or buildings from the design stage through construction
- The goal is to be at least 5% better than IECC 2012 through 2018 standards as applicable
- Performance Based requires a qualifying individual item or a system, such as high efficiency chiller, comparison with IECC 2012 through 2018 and ASHRAE 90.1 – 2007/2010 minimum-system

New Construction Incentives



Lighting Power Density

Watts/sq. ft.

5% better than **IECC 2012-2018** to qualify



Custom/Performance Based Incentives

For measures that don't fit a prescriptive incentive

- Whole building approach
- Performance Based for system approach

Incentive: \$.05 per kWh

Business Energy Services 2021 Southern New Construction Incentive Summary

New Construction - Lighting Power Density		
Measure	Unit	Incentive
Interior Lighting Power Density, 10% Better Than IECC 2009	kw	\$350.00
Interior Lighting Power Density, 5% Better Than IECC 2012	kw	\$250.00
Interior Lighting Power Density, 5% Better Than IECC 2018	kw	\$250.00
New Construction - Lighting		
Measure	Unit	Incentive
Day Light Dimming System (Not Available for IECC 2012 & 2018 Applications)	Connected Watt	\$0.10
New Construction - Performance Based / Whole Building		
Approach	Annual Energy Savings (kWh)	
Performance Based - 10% Better Than IECC 2009	\$0.05 per kWh	
Whole Building - 10% Better Than IECC 2009	\$0.05 per kWh	
Performance Based - 5% Better Than IECC 2012	\$0.05 per kWh	
Whole Building - 5% Better Than IECC 2012	\$0.05 per kWh	
Performance Based - 5% Better Than IECC 2018	\$0.05 per kWh	
Whole Building - 5% Better Than IECC 2018	\$0.05 per kWh	

Please refer to 2020 Business Energy Services New Construction Specifications document for complete specifications

Save Energy & Money Year After Year



New Construction - Cooling / Misc.			
Measure	Unit	IECC 2009, 2012 & 2018 Incentive	IECC 2012 & 2018 - C406 Incentive
Air-Cooled Units			
(<=65 kBtuh), Qual EER	Ton	\$12.00	\$14.00
(<=65 kBtuh), 1 Additional EER	Ton	\$8.00	\$10.00
(>65 to 135 kBtuh), Qual EER	Ton	\$12.00	\$14.00
(>65 to 135 kBtuh), 1 Additional EER	Ton	\$10.00	\$12.00
(>135 to 240 kBtuh), Qual EER	Ton	\$18.00	\$22.00
(>135 to 240 kBtuh), 1 Additional EER	Ton	\$10.00	\$12.00
(>240 kBtuh) Qual EER	Ton	\$18.00	\$22.00
(>240 kBtuh) 1 Additional EER	Ton	\$10.00	\$12.00
Water-Cooled Units, EER=14	Ton	\$25.00	\$30.00
Water-Cooled Units, 1 Additional EER	Ton	\$10.00	\$12.00
PTAC/PTHP, Qual EER	Ton	\$60.00	\$60.00
PTAC/PTHP, 1 Additional EER	Ton	\$24.00	\$24.00
Flat Plate Heat Exchanger ²	HX Tons	\$15.00	N/A
Variable Speed Drive	per HP	\$60.00	N/A

¹Incentives for projects subject to Section C406 of IECC 2012 & IECC 2018.

²Flat Plate Heat Exchangers are required by IECC 2012 & IECC 2018 and thus not eligible for incentive.

New Construction - Commercial Kitchen		
Measure	Unit	Incentive
HE Fryer	Vat	\$200.00
Large Vat Fryer	Vat	\$200.00
HE Griddle	Griddle	\$300.00
Convection Oven	Oven	\$350.00
Combination Oven	Oven	\$1,000.00
Steam Cooker	Steamer	\$750.00
HE Holding Cabinets, Full Size	Cabinet	\$300.00
HE Holding Cabinets, 3/4 Size	Cabinet	\$250.00
HE Holding Cabinets, 1/2 Size	Cabinet	\$200.00
Ventilation Control - New Hood	HP	\$300.00
Evaporator Fan Controller	Controller	\$35.00
Ice Machine ES/CEE I <300	Machine	\$50.00
Ice Machine ES/CEE I 300-500	Machine	\$75.00
Ice Machine ES/CEE I 500-1000	Machine	\$125.00
Ice Machine ES/CEE I 1000-1500	Machine	\$200.00
Ice Machine ES/CEE I >1500	Machine	\$250.00
Ice Machine CEE II <300	Machine	\$100.00
Ice Machine CEE II 300-500	Machine	\$150.00
Ice Machine CEE II 500-1000	Machine	\$250.00
Ice Machine CEE II 1000-1500	Machine	\$400.00
Ice Machine CEE II >1500	Machine	\$500.00
Refrigerator SD ES < 15 cf	Refrigerator	\$50.00
Refrigerator SD ES 15 ≤ V < 30 cf	Refrigerator	\$75.00
Refrigerator SD 30 ≤ V < 50 cf	Refrigerator	\$90.00
Refrigerator SD ES ≥ 50 cf	Refrigerator	\$125.00
Freezer SD ES < 15 cf	Freezer	\$60.00
Freezer SD ES 15 ≤ V < 30 cf	Freezer	\$75.00
Freezer SD ES 30 ≤ V < 50 cf	Freezer	\$80.00
Freezer SD ES ≥ 50 cf	Freezer	\$200.00
Refrigerator GD ES <15 cf	Refrigerator	\$50.00
Refrigerator GD ES 15 ≤ V < 30 cf	Refrigerator	\$75.00
Refrigerator GD 30 ≤ V < 50 cf	Refrigerator	\$90.00
Refrigerator GD ≥ 50 cf	Refrigerator	\$125.00
Freezer GD ES < 15 cf	Freezer	\$60.00
Freezer GD ES 15 ≤ V < 30 cf	Freezer	\$75.00
Freezer GD ES 30 ≤ V < 50 cf	Freezer	\$80.00
Freezer GD ES ≥ 50 cf	Freezer	\$200.00



LEARN MORE

CALL | 800.342.6335

EMAIL | bes@nvenergy.com

WEB | www.nvenergy.com/bes



Ready to start a project?

Energy Efficient Facility Improvements



Project Walk Through

John Greco
Senior Principal Engineer



Retrofits

Energy Efficient Facility Improvements

Prescriptive Lighting Retrofit Project

- Provided Customer with one page requirement document for lighting retrofit projects.
- Received completed Pre Application, W9, specification sheets, Participation Agreement and pre photos.
- Reviewed Pre Application to ensure all necessary supporting documentation has been submitted.
- Project was entered into the database and assigned to an Engineer for pre review.

Existing Parking Garage Fixtures



Existing Parking Garage Fixture Lamp





Prescriptive Lighting Retrofit Project

- The Engineer verified the following information:
 - The appropriate Business Type was selected
 - Annual operating hours
 - Overview and close up pre photos
 - Specification sheets comply with Retrofit Program Specifications
 - Proposed baseline Wattages were adjusted
- The project was pre approved.
- The Engineer followed up with the Customer at 30, 60, and 90 days.



Specification Sheet

KEYSTONE DIRECT DRIVE HID LED

KT-LED18HID-E26-840-D
HID REPLACEMENT LED LAMP

DESCRIPTION
LED HID Replacement LED Lamp (4000K) 180 CRI (Type B) 18W

LAMP TYPE: HID Replacement LED
BASE TYPE: E26 (Standard)

OPERATING TEMPERATURE: 1000K
METAL HALIDE EQUIVALENT: 70W
COLOR RENDERING INDEX (CRI): 180
WARRANTY: 5 Years

PRODUCT FEATURES

- Replacement for conventional metal halide lamp
- Non-mercury, no hot start
- 30,000+ hour lifetime
- Environmentally friendly: No mercury used
- Instant start-up
- UL Listed

OPERATING TEMPERATURE: 20°C-200°C (68°F-392°F)
Mercury-free: eliminates the need for external shaker or ballast; includes ball surge protection
IP64 rating: protects heat sink from dust; dissipates heat and guides wires intrusion out of the lamp
Suitable for use in fully enclosed fixtures

OPERATING SPECIFICATIONS

Electrical Characteristics	Photometric Characteristics	Rated Life
Rated Voltage: 120V AC	Color Temperature (CCT): 4000K	Rated Life: 50,000 hours
Rated Power: 18W	Beam Spread: 120°	
Rated Current: 0.15A	Color Rendering Index (CRI): 180	
Rated Power Factor: 0.95	Beam Angle: 120°	
Rated Efficiency: 100 lm/W	Beam Diameter: 1.5m	

BEAM DISTANCE CHART

Beam Diameter (m)	Beam Angle (°)	Beam Diameter (ft)	Beam Angle (°)
0.305	120	1.0	120
0.610	60	2.0	60
0.915	40	3.0	40
1.220	30	4.0	30
1.525	22.5	5.0	22.5
1.830	18	6.0	18
2.135	15	7.0	15
2.440	13.5	8.0	13.5
2.745	12	9.0	12
3.050	11	10.0	11
3.355	10	11.0	10
3.660	9	12.0	9
3.965	8.5	13.0	8.5
4.270	8	14.0	8
4.575	7.5	15.0	7.5
4.880	7	16.0	7
5.185	6.5	17.0	6.5
5.490	6	18.0	6
5.795	5.5	19.0	5.5
6.100	5	20.0	5

Specification Sheet

KEYSTONE DIRECT DRIVE LED

KT-LED12T5HO-24GC-840-D
T5 LED LAMP

DESCRIPTION
LED T5 LED 4000K 1-80 CRI High Efficiency

LAMP TYPE: Linear
BASE TYPE: T5 LED
WATTAGE: 24W
COLOR TEMPERATURE: 4000K
COLOR RENDERING INDEX (CRI): 180
WARRANTY: 5 Years

PRODUCT FEATURES

- Replacement for Conventional Fluorescent Lamp
- 20,000+ hour lifetime
- Environmentally friendly: No Mercury Load
- Instant Start-Up
- Direct Retrofit Mount for T5 Fluorescent Lamp
- Instant Lens Elimination Protection
- UL Classified

OPERATING TEMPERATURE: 20°C-40°C (68°F-104°F)
18 Wavelength Circuit Technology: Eliminates the Need for External Driver or Ballast
1300 Lumens per Watt
Approved Lamp Technology with Photowell Coated Glass
ULI Specification Listed (NSA/IML Standard 2 - Food Equipment)

OPERATING SPECIFICATIONS

Electrical Characteristics	Photometric Characteristics
Rated Voltage: 120V AC	Color Temperature (CCT): 4000K
Rated Power: 24W	Beam Spread: 120°
Rated Current: 0.2A	Color Rendering Index (CRI): 180
Rated Power Factor: 0.95	Beam Angle: 120°
Rated Efficiency: 100 lm/W	Beam Diameter: 1.5m

RATED LIFE
50,000 hours

SPECTRAL DISTRIBUTION
POLAR CANDELA DISTRIBUTION

Existing Parking Garage Fixtures



Existing Parking Garage Fixture Lamp



FINAL APPLICATION
PROCESS

STEP
03

Prescriptive Lighting Retrofit Project

- Customer submitted a Final Application, invoice, and post photos.
- The following information was verified:
 - Proposed equipment matched on invoices, Application, and specification sheets
 - Incentive amount was less than 50% of the total project cost
 - Project completion date and invoice date
- The project was approved and submitted for payment.
- Project Cost: \$28,616.33
- **Incentive Amount: \$9,717.07**
- Annual Energy Savings: 347,500 kWh
- Simple Payback: 0.68 Years



Retrofitted Parking Garage Fixtures



Retrofitted Parking Garage Fixtures



Compressed Air and Cooling System

Upgrade

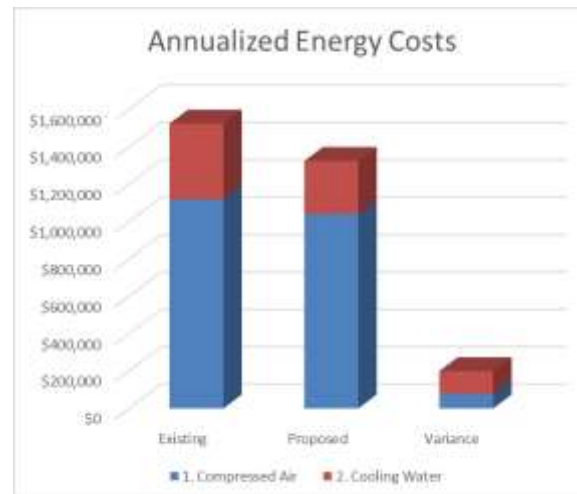
PRE-APPLICATION
PROCESS

STEP
01

Compressed Air & Cooling Upgrade

- Preliminary Meeting
- Pre-Application package was submitted
- Reviewed contractor's proposed plans and savings estimate.
- Requested additional details regarding the proposed energy efficiency measures, savings, and strategy.

Preliminary Estimated Energy Savings



Existing Motor Starters for Cooling Tower Fans

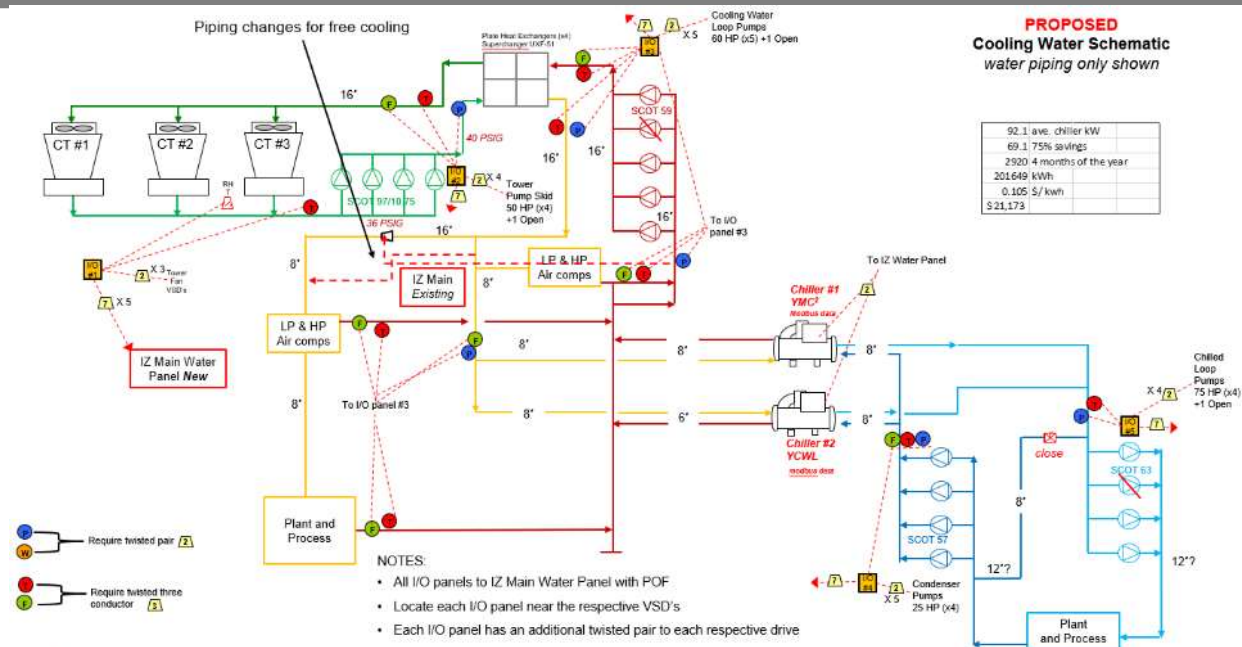
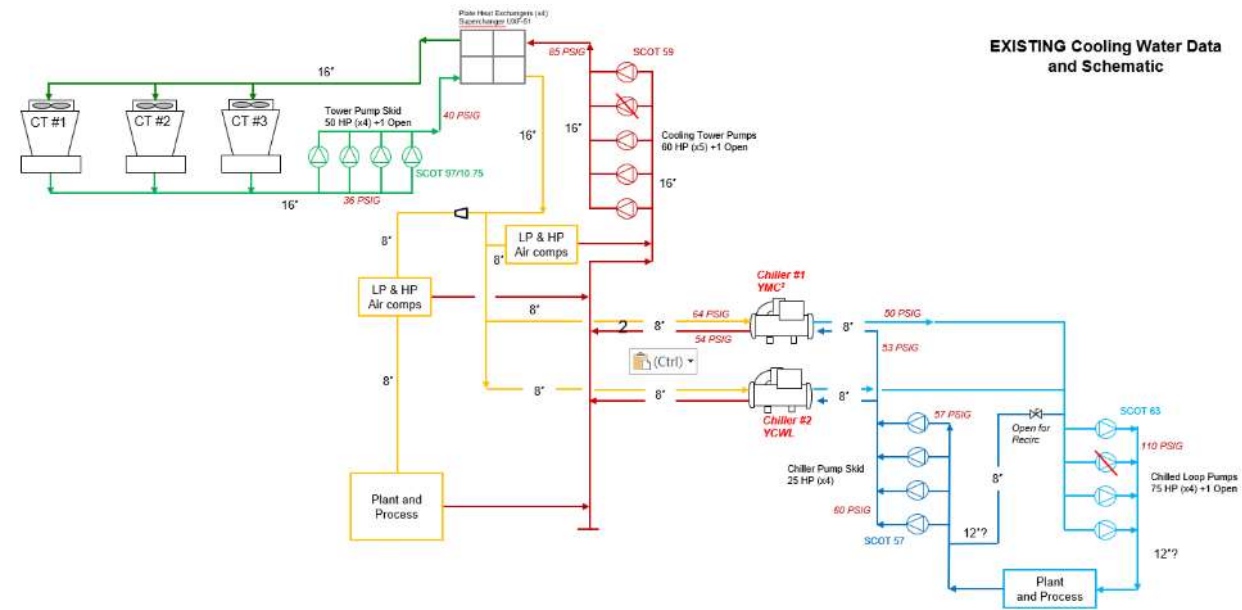


New Variable Frequency Drives for Cooling Tower Fan Motors



Compressed Air & Cooling Upgrade

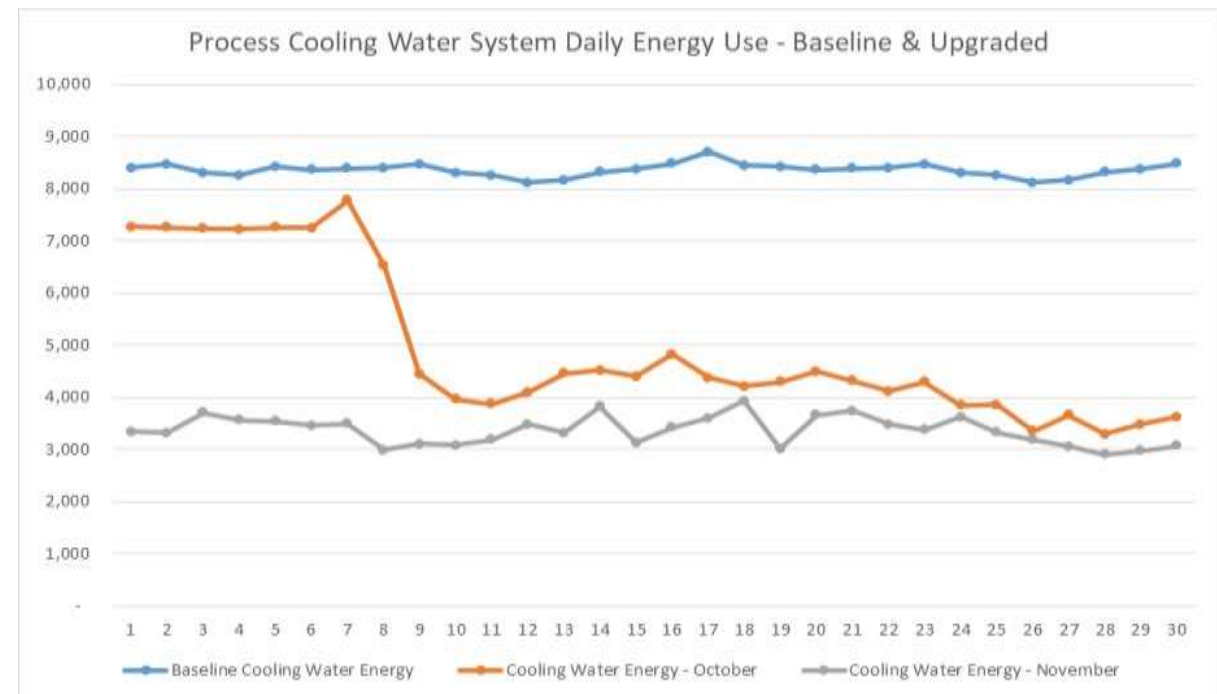
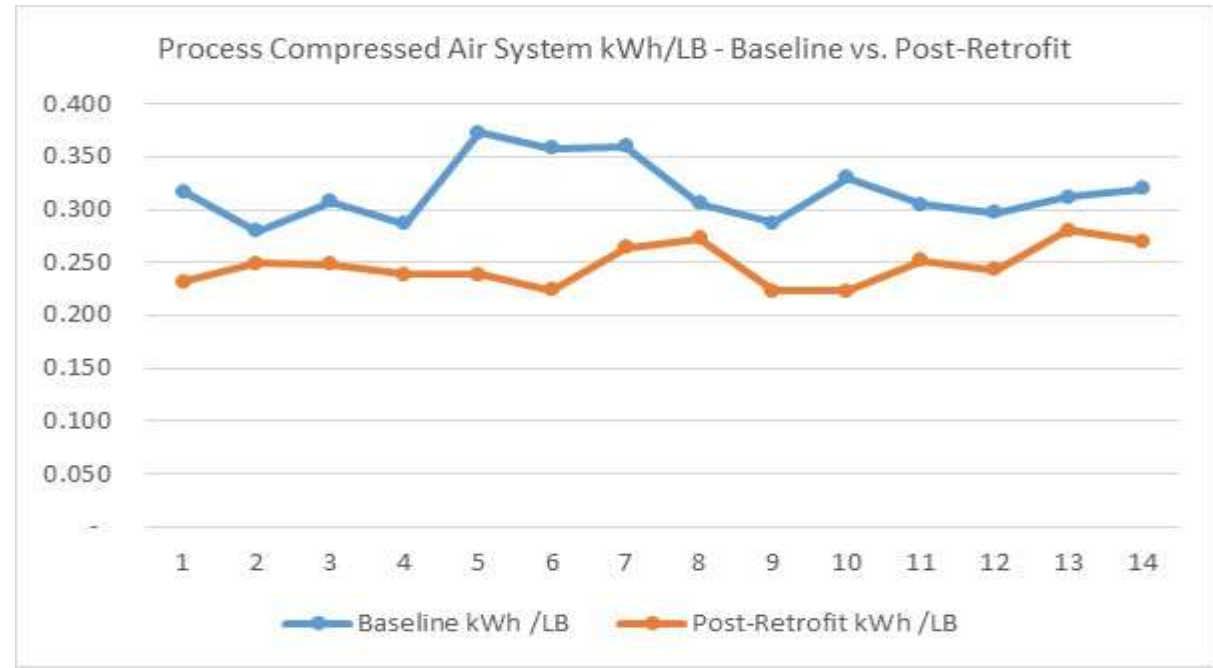
- Reviewed additional details.
- Collaborated on the pre & post data collection requirements project timeline.
- Pre Approved the project based on a revised energy savings estimate.
- Permanent power meters and other instrumentation installed on all equipment.
- Baseline power usage trend data was recorded
- Installation of all proposed upgrades completed by the contractor
- Tuning and calibration period to optimize the operation of both systems.
- Post Retrofit power usage trend data recorded.





Compressed Air & Cooling Upgrade

- Final Application, Annual kWh Savings Analysis, and trend data files submitted
- Requested additional Historical Production LBS data
- Revised the Savings Analysis, determined the final incentive amount
- Prepared a Final Report for the project.
- Project Cost: \$430,676.00
- **Incentive: \$154,278.58**
- Energy Savings: 4,171,143 kWh/year
- Simple Payback: 9 months





New Construction

Retail

Prescriptive New Construction

Project Summary

- Sent customer technical requirements document
- Set up pre construction meeting
- Requested complete copy of required documents
- Discussed completion date and estimated opening date
- Pre application submitted by customer

Technical Requirements

powershift
by NV Energy

NV Energy - Business Energy Services - Preliminary New Construction Incentive Requirements

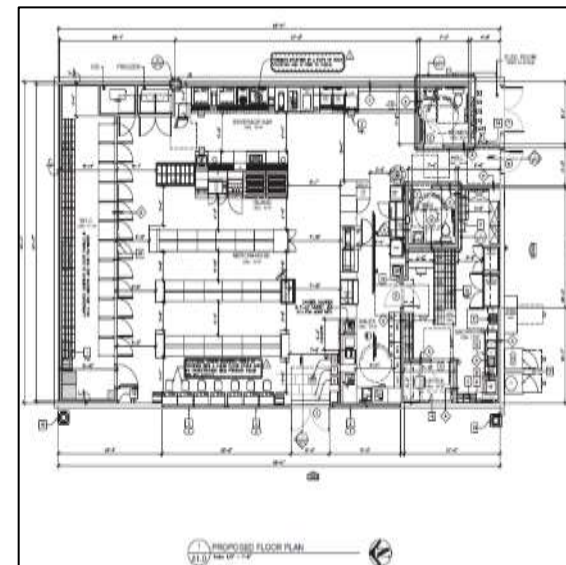
The following are the preliminary items for estimating the total kWh saving for new construction projects:

Construction Documents
The full sets of Architectural and MEP Engineering drawings (Mechanical, Electrical, and Plumbing) needs to be provided by the customer.

- In addition to the documentation listed below please insure to include the com Check Reports, the Lighting Layout plan and Lighting Fixture Schedule and the IECC code under which project is permitted.

- Architectural Drawings**
 - The Code Analysis must be included so that we can understand what version(s) of the IECC and other Building Codes (e.g. 2009, 2012, 2015 or 2018) the project is permitted under, as this can directly affect the incentive rates. If available, the Building Permits can also be used to verify the pertinent Codes.
 - If the customer is planning on applying under the Whole Building Performance measure by utilizing energy modeling, the details for each individual envelope component (walls, roofs, and window types) is required.
- Mechanical Drawings**
 - The Mechanical Schedules must be provided, as they inform us of pertinent HVAC system information about the system components, such as the equipment's energy efficiency ratio (EER), size/volume, fan power, etc.
 - Calculations must also be included for the HVAC System's outside air requirements.
 - The drawings and specifications for the existing District Energy Plant must also be provided.
- Electrical Drawings**
 - The Lighting Plans for the interior and exterior lighting must be included.
 - ComCheck compliance reports must also be included. The ComCheck compliance reports will provide a summary of the proposed quantities and Watts for each light fixture.
- Commercial Kitchen Equipment**
 - CEE/ENERGY STAR commercial kitchen equipment can qualify for a Prescriptive incentive.
 - Food Service Drawings and Submittals must be provided in order to evaluate if the proposed electrical commercial kitchen equipment meets program requirements for incentivization.
- Submittals**
Approved Submittals for each the mechanical and lighting system major components must be provided. The submittals provide highly detailed information, such as the

As-Built





Prescriptive New Construction

- Schedule for post site inspection.
- Confirmed model number of qualified equipment.
- Ensured all lighting fixtures are installed per the as built floor plan
- Interviewed store managers/staff to verify the hour of operation of the building
- Obtained Post Photos of qualified measures
- Final inspection report to be completed by engineer.
- Updated Application
- Application submitted for payment request
- **Total Incentive: \$2,258.10**
- kWh saved: 38,163 kWh

Final Inspection





Whole Building Performance

Warehouse

STEP
01

PRE-APPLICATION
PROCESS

Whole Building Performance

Warehouse

- Pre application received.
- Reviewed supporting documentation
- Full set of drawing (Architectural, Mechanical, Electrical and plumbing).
- Energy modeling files for baseline and proposed are required.
 - We only accept eQuest and Energy Plus simulation programs.
- Submittals and spec sheets for all electrical and mechanical equipment reviewed



Project Details:

570,600 SF Warehouse

43,374 SF offices

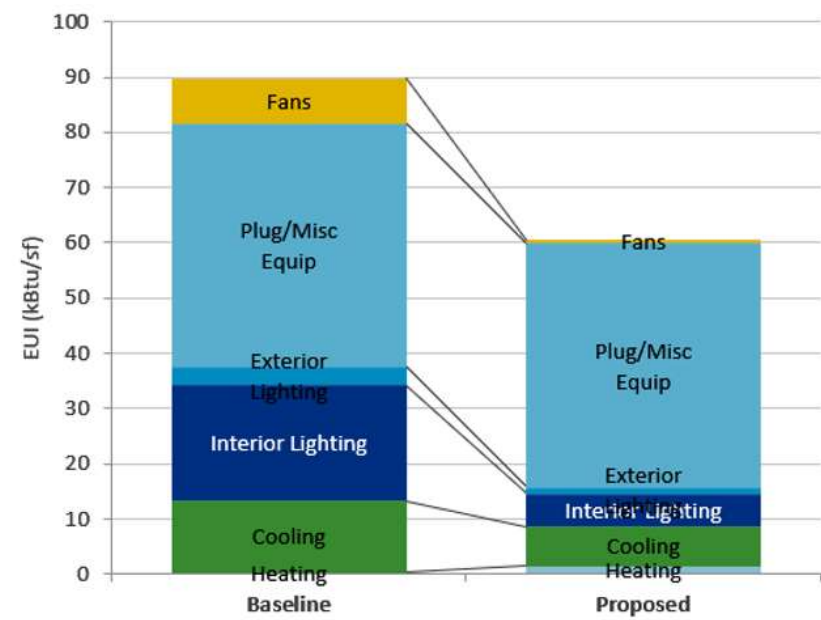
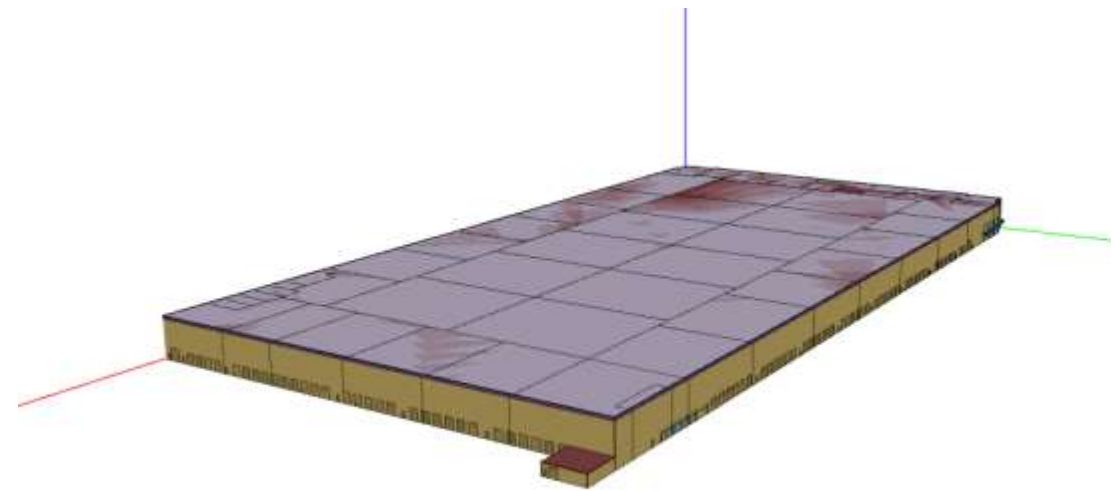
1,699,240 SF parking area



Whole Building Performance

Warehouse

- Reviewed drawing and submittals
- Compared baseline model to the IECC code
- Ensured the proposed model matched the as-built drawing and submittals.
- Compare results from baseline and proposed energy models to determine energy savings between the two cases.



Energy Use Index Baseline VS proposed.



Whole Building Performance

Warehouse

- Final Inspection
- Check the installation of all lighting fixtures, HVAC and commercial kitchen equipment at site.
- Post Inspection Pictures
- Annual Energy Saving: 5,498,748 kWh/ year
- Total Incentive amount before tiering: \$276,833
- **Total Incentive: \$188,416**



Start a project

Connect with Energy Advisor Early in Project.

Review Incentive Requirement Sheets

Don't forget pre-photos

Reserve your funds

Stay on target

Keep us posted on project progress

Let us know of changes to timelines

Finalize application

Submit all necessary documentation

Don't forget post-photos

Potential final inspection

Capture Savings



Save **Energy** & **Money**



3 Easy Steps to Long Term Savings

Reminders!

- ✓ **Include 2018 W-9 with application**
- ✓ Specs for measures when you submit the application
- ✓ Sign and submit Participation Agreement
- ✓ **Use fixture wattages, not lamp wattages for all Watts Reduced measures**
- ✓ When submitting a 3rd Party Payment Form the customer needs to sign after the contractor
- ✓ Submitted savings estimates are subject to review. Additional documentation or calculations may be required
- ✓ Equipment monitoring may be required
- ✓ **Email all project information to bes@nvenergy.com**



Contractor Network

Tasha Brown

Marketing/Outreach Manager, Business Energy Services

Why Work with Our Contractors?



Customer Benefits Trade Partners

- Trained on Program Offerings
- Verified References
- Excellent Customer service



Adding Value Application Support

- Understand the process
- Understand the application
- Do the paperwork for you



Capturing Savings

- Ensure you receive highest Savings!

How to Find A Contractor

Go to our website; www.nvenergy.com/bes



Incentives & No-Cost Offers



Reduce operating expenses with incentives for energy efficiency and demand response equipment, and qualified custom projects that cut your energy costs.



[LEARN ABOUT INCENTIVES](#)

Find a Contractor

Locate contractors in your area who are knowledgeable about Business Energy Services incentives.



[LEARN MORE](#)



Search here for contractors in your area experienced in NV Energy's Business Energy Services Incentive Program (except Small Business Savings program). Search by the LOCATION of your project, and the SERVICES you are seeking. For Small Business Savings contractors, [click here](#).

Search here for contractors in your area experienced in NV Energy's Business Energy Services Incentive Program. Search by the LOCATION of your project, and the SERVICES you are seeking.

NVE TA List

Location: Services:



NVE TA List

Location: Services:

- All
- Northern Nevada
- Southern Nevada



NVE TA List

Location: Services:

- All
- Architectural/Design Services
- Boilers
- Engineering Services
- Equipment Vendor
- HVAC Consulting
- HVAC Installation
- IT Solutions
- Lighting Consulting
- Lighting Installation
- Pump Services
- Refrigeration Consulting
- Refrigeration Installation
- EE/DR



Ready to Start a Project?



Access Contractors Online



Search here for contractors in your area experienced in NV Energy's Business Energy Services Incentive Program (except Small Business Savings program). Search by the LOCATION of your project, and the SERVICES you are seeking. For Small Business Savings contractors, [click here](#).

Search here for contractors in your area experienced in NV Energy's Business Energy Services Incentive Program. Search by the LOCATION of your project, and the SERVICES you are seeking.

NVE TA List

Location: Services:

Company	Location	Services
ADAM ELECTRIC Las Vegas David Adams 702-784-1811 David@adamselectric.com http://adamselectric.com	Southern	HVAC Consulting HVAC Installation Lighting Consulting Lighting Installation
BIDENERGY INC Phoenix Tim Wray 216-732-4400 tim.wray@bidenergy.com www.bidenergy.com	Northern Southern	HVAC Consulting Lighting Consulting Refrigeration Consulting
ECOGREEN SOLUTIONS, INC. Lapwai Ngwat Cody Shupe (509) 394-9393 Cody@ECOSol.com www.ecosol.com	Northern Southern	Equipment Vendor HVAC Consulting HVAC Installation Lighting Consulting Lighting Installation Pump Services Refrigeration Consulting

OR

Talk with an Energy Advisor

To get a printable list



1-800-342-6335



Contractor Network Membership

Benefits and Enrolment

Why Partner with PowerShift



Training

- Service Offerings
- Application Process
- Latest Tech and Trends

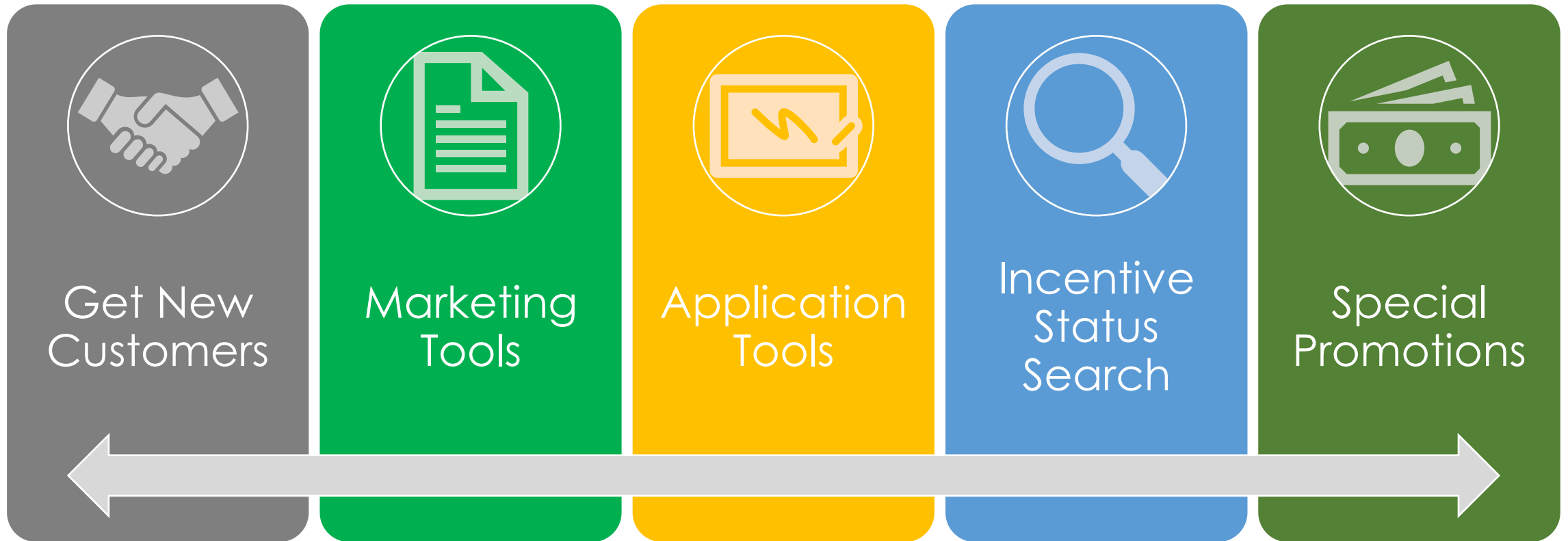


Designated Energy Advisor

- Ongoing Support
- Updates and Program Changes

Additional Benefits

Contractor Network



Online Portal

Contractor Network Site



The Business Energy Services Contractor Network is a powerful tool that gives you an added advantage to help your customers save energy and money. It's where you'll find technical support, trainings, and application and marketing resources, along with helpful information. Just click to get started.



News & Updates

Find out what's happening with Business Energy Services.



Classes & Events

Sign up for free monthly trainings to hear from leading industry experts about the latest in energy efficiency technologies and trending topics. We also offer Contractor Network-exclusive trainings designed to help you promote the value of energy-saving projects.



Application Tools

Go to the online application or download the Excel applications, specification sheets, incentive summaries and valuable resources you need to apply for PowerShift incentives.



Marketing Tools

Download Business Energy Services brochures, case studies and fact sheets to share with your customers.



Rebate Status

Check the status of your applications online anytime, from any connected device.



Contact Us

Contact a PowerShift Energy Advisor with any questions or comments via phone, web or email.



powershift
by  **NV Energy**

Rebate Status



Check the status of your applications online anytime from any connected device.

Quickly and easily learn the status of an application online. Here's how it works:

1. Locate the last 5 digits of Project Number and Project Password assigned to your application.
2. Enter these numbers in the appropriate fields below.
3. Select "View Report."

Project Number

Password

The Enrolment Process



Open Enrolment

Jan-Feb
June-July



Submit Application

Supporting
Documentation

- W9
- Contractors License
- Business License
- References



Application Review

Reference Check
License Verification



Approval

Onboarding
Assigned Energy Advisor
Access to Resources



Business Energy Services Contractor Network Application

Business Energy Services offers incentives to commercial customers to reduce energy usage in new and existing buildings. If you're in the business of helping NV Energy commercial customers save energy, you should consider joining the Business Energy Services Contractor Network. Members of the Contractor Network are trained on Business Energy Services processes and procedures. All participants must be committed to assisting customers with energy efficiency improvements and application support.

Benefits include

- Company information available on the Business Energy Services website.
- Free program training.
- Access to information on the services available for marketing purposes.
- Technical support for project assessment and customer relations.

- Submit a copy of your Nevada State Contractors License
- Submit a copy of valid business license
- Submit a copy of your business's W9
- Participate in orientation training

Open Enrollment Periods

- January to February and June to July

To Join the Business Energy Services Contractor Network

- Complete and submit this application

To maintain your status

- Submit and complete a minimum of one project each year.
- Attend the Contractor's Network training or program kickoff annually.
- Ensure all company representatives are properly trained.
- Provide services in accordance with the Business Energy Services Policies and Procedures.
- Maintain good customer service.

To Apply

Submit the completed application to the Business Energy Services team at bes@nvernergy.com.

The Business Energy Services team will review all applications to verify the information provided. A team member will reach out to the point of contact, listed on the application, if any information is missing or inadequate. You will be notified via email when your application is approved, and your company information will be available to customers at nvernergy.com/bes.

IMPORTANT: The information completed on the "Company Information" segment of the application will be the information included in our online contractor directory. We will use all additional

contact information listed to notify you about incentive updates, special offers, upcoming events, and other services. Business Energy Services provides the Contractor Network list as a convenience for customers for informational purposes only. It does not constitute an endorsement of any contractors, nor a preference among the companies listed. Participating Contractors do not work for NV Energy and may not present themselves as approved, authorized or endorsed by NV Energy.

Any Company found to be misrepresenting themselves or misusing NV Energy materials will be removed from the Business Energy Services Contractor Network.

Questions?

Contact Information

1-800-342-6335
E-mail: bes@nvernergy.com
Web: nvernergy.com/bes



Contractor Network



Join the Contractor Network

Grow your business and enjoy the exclusive benefits of membership that include classes and events, marketing tools, monthly Tech Talks articles, program updates and more.

Grow your business by joining our network of approved contractors. Benefits include classes, incentive updates, and technical support from our Energy Advisors.

LEARN MORE

CONTRACTOR NETWORK

Become a Member of the Business Energy Services Contractors Network

- **Large Business Contractor Network Application** (servicing large businesses using 400,000 kWh or more per year)
- **Small Business Savings Contractor Network Application and Agreement** (servicing small businesses using less than 400,000 kWh per year)
- **Small Business Savings Policies and Procedures Agreement**

Talk with an Energy Advisor

To Learn More

1-800-342-6335





PowerShift
Energy

More Ways to Save

Explore other Energy Saving Solutions by PowerShift



powershift

by  **NV**Energy

Talk with an Energy Advisor

1-800-342-6335

Email bes@nvenergy.com

Thank You! We look forward to working with you.